

PERFORMANCE**Processor**

Intel® Core™ i7-1165G7 (4C / 8T, 2.8 / 4.7GHz, 12MB)

Graphics

Integrated Intel Iris® Xe Graphics

Chipset

Intel SoC Platform

Memory

4GB Soldered DDR4-2933 + 8GB SO-DIMM DDR4-2933

Memory Slots

One memory soldered to systemboard, one DDR4 SO-DIMM slot, dual-channel capable

Max Memory

Up to 12GB (4GB soldered + 8GB SO-DIMM) DDR4-2933 offering

Storage

512GB SSD M.2 2242 PCIe 3.0x4 NVMe

Storage Support

Up to two drives, 1x 2.5" HDD + 1x M.2 SSD

- 2.5" HDD up to 2TB
- M.2 2242 SSD up to 512GB
- M.2 2280 SSD up to 1TB

Card Reader

None

Optical

None

Audio Chip

High Definition (HD) Audio

Speakers

Stereo speakers, 1.5W x2, Dolby® Audio™

Camera

720p with Privacy Shutter

Microphone

Mono

Battery

Integrated 36Wh

Max Battery Life

MobileMark® 2018: 6.5 hr

Power Adapter

65W Round Tip (2-pin, Wall-mount)

DESIGN**Display**

15.6" FHD (1920x1080) IPS 250nits Anti-glare

Touchscreen

None

Keyboard

Non-backlit, Russian

Case Color

Platinum Grey

Surface Treatment

IMR (In-Mold Decoration by Roller)

Case Material

PC + ABS (Top), PC + ABS (Bottom)

Dimensions (WxDxH)

363 x 254.6 x 22.9 mm (14.29 x 10.02 x 0.9 inches)

Weight

2.2 kg (4.8 lbs)

SOFTWARE**Operating System**

None

Bundled Software

None

CONNECTIVITY**Ethernet**

100/1000M

WLAN + Bluetooth®

11ac, 2x2 + BT5.0

Standard Ports

- 1x Power connector
- 1x Ethernet (RJ-45)
- 1x USB-C 3.2 Gen 1 (support data transfer only)
- 1x HDMI® 1.4
- 2x USB 3.2 Gen 1
- 1x Headphone / microphone combo jack (3.5mm)

SECURITY & PRIVACY**Security Chip**

Firmware TPM 2.0

Fingerprint Reader

None

Physical Locks

Kensington® Security Slot

Other Security

Camera privacy shutter

SERVICE**Base Warranty**

2-year, Depot

Included Upgrade

None

CERTIFICATIONS**Green Certifications**

- ErP Lot 3
- RoHS compliant

MODEL

TopSeller : No

Announce Date : 2021-02-01

EAN / UPC / JAN : 195713777674

End of Support : 2026-12-30



· Product image on this page is a sample, it may not match the real color of this model
 · Battery life is an estimated maximum. Actual battery life may vary based on many factors, including screen brightness, active applications, features, power management settings, battery age and conditioning, and other customer preferences

Premium Care - Advanced Support from Real People. Real Fast.



REAL PERSON

Choose how you want to reach us - through the phone, chat or email - our expert technicians will take care of you.



REAL FAST

Highly trained technicians will provide you real-time solutions, whatever the issue, on your first contact. If needed, our team will schedule an onsite visit for the next business day.



HASSLE FREE

'Getting started' and 'how-to' assistance for hardware and software. Easy solutions that are simple to reach - that's how Premium Care delivers you the ideal support experience.



PC HEALTH CHECK

Free annual PC Health Check that allows our experts to spot issues before you do so they can resolve them quickly and help you avoid PC problems.

Accidental Damage Protection - Protection of your PC from the unexpected.

Experience shows that a significant portion of devices may be damaged (and not covered under warranty) in the first three years. Lenovo's Accidental Damage Protection service covers accidents beyond the system warranty such as drops, spills, bumps and even electrical surges. Make sure your new device has maximum protection, avoid unplanned costs and get peace of mind.

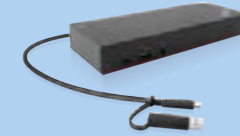
Base Warranty – Included with the systems you purchase, default 1- or 3-year coverage window.

Warranty Extensions & Upgrades – Service and protection that's right for your circumstances.

- Pick Up & Return Courier
- Onsite Support
- Technician Installed Customer
- Replaceable Unit Service
- International Warranty Upgrade

Lenovo may not offer the products, services or features discussed in this document in all regions. Lenovo may withdraw an offering at any time. Consult your local representative for information on offerings available in your area. Lenovo reserves the right to change specifications or other product information without notice. Lenovo is not responsible for photographic or typographical errors. Lenovo provides this publication "as is" without warranty of any kind, either express or implied, including the implied warranties of merchantability or fitness for a particular purpose.

Recommended Accessories



ThinkPad Hybrid USB-C with USB-A Dock (American Standard Plug Type B)

40AF0135US

The ThinkPad Hybrid USB-C with USB-A Dock expands the capabilities of most any laptop, new or old, making it perfect for enterprise customers with mixed-PC or shared-desk environments. Featuring enterprise-class manag...



Lenovo 65W AC Wall Adapter(UL)

GX20L29355

Get power when and where you need it. Keep one in the office, one at home, and another in your carrying case for convenient access to power. Just plug it into an available outlet to deliver AC power to the compatible ...

For a full list of accessories and services, please visit: <https://smartfind.Lenovo.com>

Lenovo

PSREF
Product Specifications
Reference