

## PERFORMANCE

### Processor

Intel® Core™ i5-1135G7 (4C / 8T, 2.4 / 4.2GHz, 8MB)

### Graphics

Integrated Intel Iris® Xe Graphics

### Chipset

Intel SoC Platform

### Memory

8GB Soldered DDR4-3200

### Memory Slots

Memory soldered to systemboard, no slots, dual-channel

### Max Memory

8GB soldered memory, not upgradable

### Storage

256GB SSD M.2 2280 PCIe 3.0x4 NVMe

### Storage Support

One drive, up to 1TB M.2 2280 SSD

### Card Reader

MicroSD Card Reader

### Optical

None

### Audio Chip

High Definition (HD) Audio

### Speakers

Stereo speakers, 2W x2, Dolby® Atmos®, Dolby-branded

### Camera

720p + IR + ToF

### Microphone

2x, Array

### Battery

Integrated 60.7Wh

### Max Battery Life

MobileMark® 2014: 15 hr (FHD)

### Power Adapter

65W USB-C Slim

## DESIGN

### Display

14" FHD (1920x1080) IPS 300nits Glossy, 100% sRGB

### Touchscreen

None

### Keyboard

Backlit, Russian

### Case Color

Slate Grey

### Surface Treatment

Anodizing sandblasting

### Case Material

Aluminium (Top), Aluminium (Bottom)

### Dimensions (WxDxH)

320.6 x 208.18 x 14.9 mm (12.62 x 8.2 x 0.59 inches)

### Weight

1.36 kg (2.99 lbs)

## SOFTWARE

### Operating System

Windows® 10 Home 64, Russian

### Bundled Software

Office Trial

## CONNECTIVITY

### Ethernet

None

### WLAN + Bluetooth™

11ax, 2x2 + BT5.0

### Standard Ports

- 1x card reader
- 1x USB 3.2 Gen 1
- 1x USB 3.2 Gen 1 (Always On)
- 1x HDMI® 1.4b
- 1x headphone / microphone combo jack (3.5mm)
- 2x Thunderbolt™ 4 / USB4™ 40Gbps (support data transfer, Power Delivery 3.0 and DisplayPort™ 1.4)

## SECURITY & PRIVACY

### Security Chip

Firmware TPM 2.0

### Fingerprint Reader

None

### Other Security

IR camera for Windows Hello

## SERVICE

### Base Warranty

1-year, Depot

### Included Upgrade

None

## ACCESSORIES

### Bundled Accessories

None

## CERTIFICATIONS

### Green Certifications

- ENERGY STAR® 8.0
- ErP Lot 3
- RoHS compliant

### Other Certifications

Intel® Evo™ Platform

## MODEL

TopSeller : Yes

Announce Date : 2020-11-20

EAN / UPC / JAN : 195477014015

End of Support : 2026-12-09



· Product image on this page is a sample, it may not match the real color of this model  
· Battery life is an estimated maximum. Actual battery life may vary based on many factors, including screen brightness, active applications, features, power management settings, battery age and conditioning, and other customer preferences

## Premium Care - Advanced Support from Real People. Real Fast.



### REAL PERSON

Choose how you want to reach us - through the phone, chat or email - our expert technicians will take care of you.



### REAL FAST

Highly trained technicians will provide you real-time solutions, whatever the issue, on your first contact. If needed, our team will schedule an onsite visit for the next business day.



### HASSLE FREE

Getting started' and 'how-to' assistance for hardware and software. Easy solutions that are simple to reach - that's how Premium Care delivers you the ideal support experience.



### PC HEALTH CHECK

Free annual PC Health Check that allows our experts to spot issues before you do so they can resolve them quickly and help you avoid PC problems.

## Accidental Damage Protection - Protection of your PC from the unexpected.

Experience shows that a significant portion of devices may be damaged (and not covered under warranty) in the first three years. Lenovo's Accidental Damage Protection service covers accidents beyond the system warranty such as drops, spills, bumps and even electrical surges. Make sure your new device has maximum protection, avoid unplanned costs and get peace of mind.

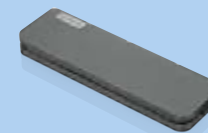
## Base Warranty – Included with the systems you purchase, default 1- or 3-year coverage window.

## Warranty Extensions & Upgrades – Service and protection that's right for your circumstances.

- Pick Up & Return Courier
- Onsite Support
- Technician Installed Customer
- Replaceable Unit Service
- International Warranty Upgrade

Lenovo may not offer the products, services or features discussed in this document in all regions. Lenovo may withdraw an offering at any time. Consult your local representative for information on offerings available in your area. Lenovo reserves the right to change specifications or other product information without notice. Lenovo is not responsible for photographic or typographical errors. Lenovo provides this publication "as is" without warranty of any kind, either express or implied, including the implied warranties of merchantability or fitness for a particular purpose.

## Recommended Accessories



### Lenovo USB-C Mini Dock\_US

40AU0065US

Expand Your Potential with An Universal Mini Dock; Lenovo understands that modern business depends on a wide variety of PC's and even brands to meet their business needs. To make this easier Lenovo USB-C Mini dock is ...

## Recommended Services

BEST	-
BETTER	-
GOOD	3Y Depot/CCI upgrade from 1Y Depot/CCI delivery (5WS0K76347)

For a full list of accessories and services, please visit: <https://smartfind.Lenovo.com>



**PSREF**  
Product Specifications  
Reference