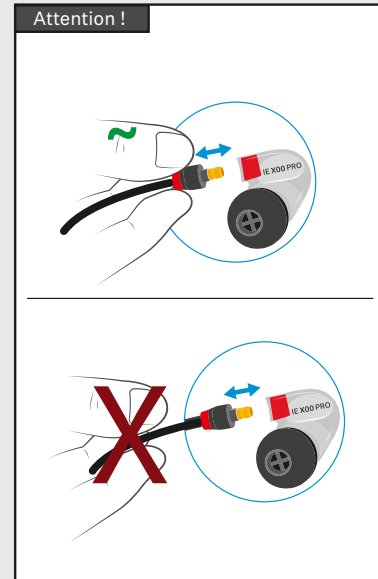
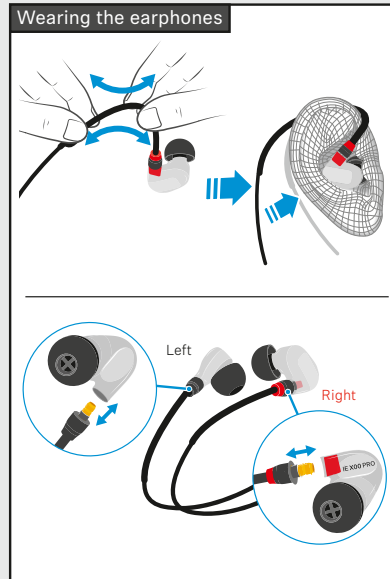
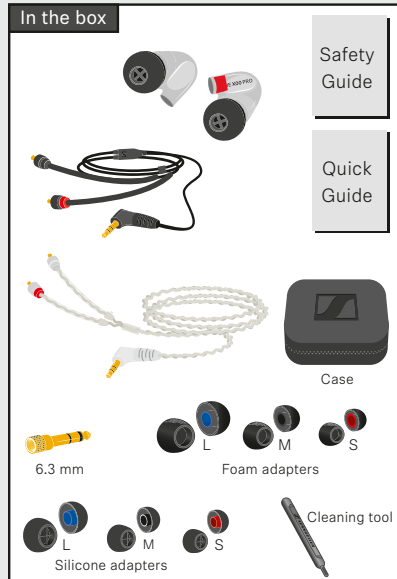




IE 400 PRO IE 500 PRO

Quick Guide | Kurzanleitung | Guide rapide | Guida rapida | Guía de inicio rápido |
Guia rápido | Beknopte handleiding | Krótka instrukcja obsługi | Snabbguide | Kort
vejledning | Pikaohje | Γρήγορος οδηγός | Kısa Kılavuz | Краткая инструкция | 快速指南 |
快速使用指南 | クイックガイド | 요약 설명서

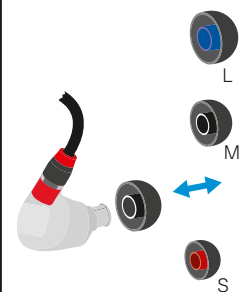


SENNHEISER

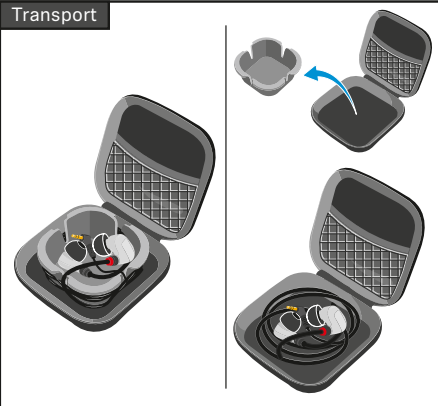
Sennheiser electronic GmbH & Co. KG

Am Labor 1, 30900 Wedemark, Germany, www.sennheiser.com
Printed in Germany, Publ. 11/19, 578646/A03

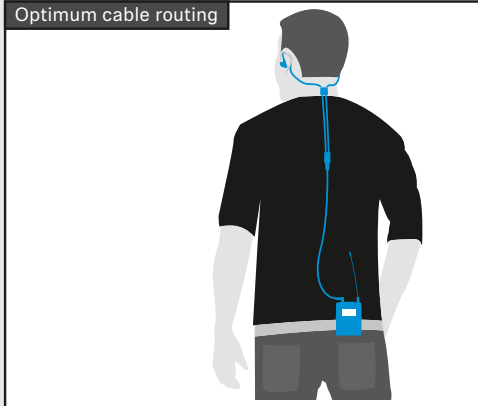
Replacing the ear adapters



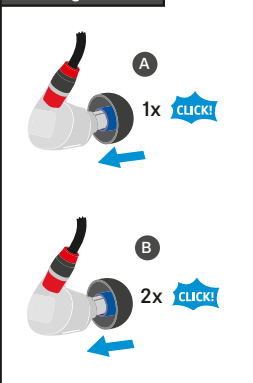
Transport



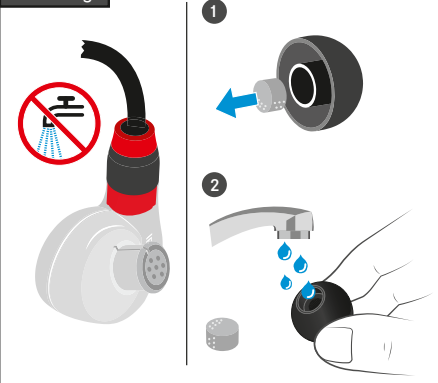
Optimum cable routing



Wearing comfort



Cleaning



Specifications

IE 400 PRO | IE 500 PRO

Frequency response	6 Hz - 19 kHz 6 Hz - 20 kHz
Impedance	16 Ω
Sound pressure level (1 kHz/1 V _{rms})	123 dB 126 dB < 0.08 %
THD (1 kHz, 94 dB)	
Noise attenuation	up to 26 dB
Magnetized field strength	2 mT
Operating temperature	-5 °C to +50 °C
Storage temperature	-20 °C to +70 °C
Relative air humidity	< 95 %