

Dynamic



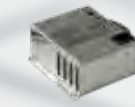
Standard equipment:



• 5.511.1941
PP brush Ø 430 mm - 17"



• 4.508.1319 Front squeegee blade Shore 40 Th. 2,5 mm
• 4.508.1320 Rear squeegee blade Shore 40 Th. 3,0 mm



• 0.108.0073
On-board Battery charger 24V 10A

(only for model code: 8.580.0002/8.580.0003)



• 2 x 0.107.0061
Maintenance free battery 12 MFP 50 - 12V 50Ah

only for model code: 8.580.0003



Watch the video on youtube:
www.youtube.com/lavorpro

- Ideal for small and medium floors up to 1600sqm, especially when congested by people or furnishing like in wellness centres, gyms, car showroom, retail shops, hospitals and schools.
- Automatic brush attachment, discharge and delayed cut-off.
- Adjustable solution release with automatic cut-off.
- Narrow body with both side brush protrusion and 300° squeegee spin.
- Tool less removable recovery tank with large visual inspection window and stretchable discharge hose.
- Adjustable driving handle with dead man switches, soft touch controls and diagnosis (Eco Energy mode and battery low level automatic cut-off for DC version).
- Large non marking working wheels and sturdy rear roller for displacements.

	Dynamic 45E	Dynamic 45B	Dynamic 45B
code	8.580.0001	8.580.0002	8.580.0003
power supply	230V 50Hz	24V (battery charger included)	24V (batteries and charger included)
scrubbing/squeegee width	450/540 mm	450/540 mm	450/540 mm
max working capacity	1600 m ² /h	1600 m ² /h	1600 m ² /h
solution tank capacity	30 l/7.92 gal	30 l/7.92 gal	30 l/7.92 gal
recovery tank capacity	32-35 l/8.45 - 9.24 gal	32-35 l/8.45 - 9.24 gal	32-35 l/8.45 - 9.24 gal
traction	mechanical	mechanical	mechanical
RPM/pressure on the brushes	150/18 kg/39,68 lbs	150/18 kg/39,68 lbs	150/18 kg/39,68 lbs
brush motor power	300 W	400 W	400 W
detergent solution system	solenoid valve	solenoid valve	solenoid valve
depression/vacuum motor	1200 mmH ₂ O/700 W	1200 mmH ₂ O/400 W	1200 mmH ₂ O/400 W
dimensions/weight	117x58x78 cm/66 kg	117x58x78 cm/53 kg	117x58x78 cm/94 kg



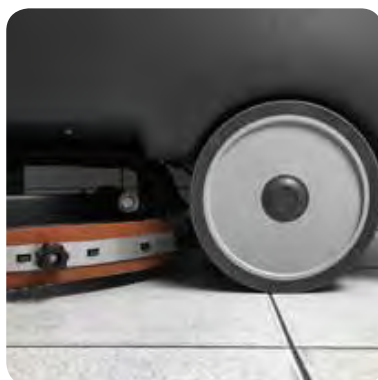
On/off switch protecting unintentional use.
Protection against overloads, battery discharge abuse (DC only) and undesired run.
Convenient one switch maintenance over the brush.
Eco Energy setting for extensive working time and extremely quite operations (DC only).

Accessible on-board charger (DC only, when provided), far away from sprays.
Time saving convenient foot operating squeegee lift.
Handle can be easily adjusted to fit comfort of operators even in narrow spaces.

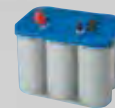


Easy access and handling to clean recovery tank and floater.
Less downtimes due to simple maintenance and construction
Great visibility and cleaning capability on hard to reach edges on both sides of the brush.

Extensive squeegee spin for easy blade replacement and perfect suction even on corners
Easy setting and automatic solution release to save chemical and fit different floor conditions.
High stability and capability to overtake small steps.



Optional accessories:



- 2 x 0.107.0050 Battery AGM 12V 55Ah



- 4.508.1324 Polyurethane front blade TH. 3
- 4.508.1325 Polyurethane rear blade TH. 4



- 5.511.1942 Tynex brush Ø 430 mm-17"
- 5.511.1943 PP 0,3 brush Ø 430 mm-17"
- 5.511.1944 PES brush Ø 430 mm - 17"



- 5.511.0229 EWU pad driver Ø 430 mm-17"



- 6.508.0032 Abrasive pad Ø 430 mm-17" - beige (5 pcs.)
- 6.508.0039 Abrasive pad Ø 430 mm-17" - green (5 pcs.)
- 6.508.0046 Abrasive pad Ø 430 mm-17" - black (5 pcs.)



- 4.512.0068 Extension electric cord 15 m with Schuko plug