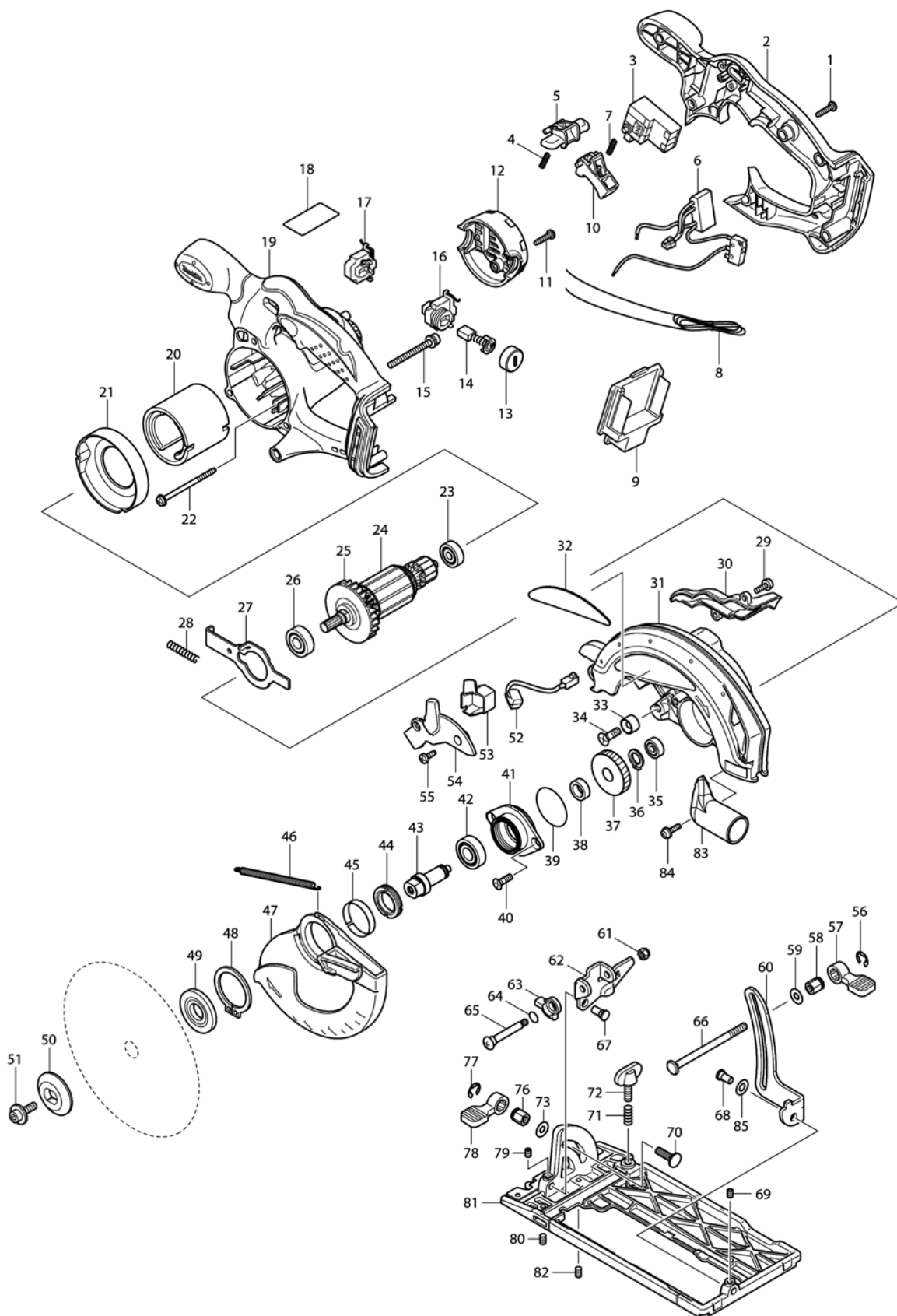


Model No.DSS610 CORDLESS CIRCULAR SAW 165MM



Model No.DSS610 CORDLESS CIRCULAR SAW 165MM

Item	Parts No.	Description	I/C	Qty	New/Old	Opt. 1	Opt. 2	Note
001	265995-6	TAPPING SCREW 4X18		6				
002	141470-5	HANDLE COVER COMPLETE		1				
003	650631-1	SWITCH		1				
004	231469-9	COMPRESSION SPRING 4		1				
005	419322-1	LOCK OFF LEVER		1				
006	620088-0	POWER SUPPLY CIRCUIT		1				
007	231469-9	COMPRESSION SPRING 4		1				
009	644808-8	TERMINAL		1				
010	419176-6	SWITCH LEVER		1				
011	265995-6	TAPPING SCREW 4X18		2				
012	419281-9	REAR COVER		1				
013	643941-3	BRUSH HOLDER CAP		2				
014	194435-6	CARBON BRUSH CB-441		1				
015	911263-2	PAN HEAD SCREW M5X40		3				
016	643882-3	BRUSH HOLDER		1				
017	643883-1	BRUSH HOLDER		1				
018	815E89-3	DSS610 NAME PLATE		1				
019	141471-3	MOTOR HOUSING COMPLETE		1				
020	638107-8	YOKE UNIT		1				
021	419285-1	BAFFLE PLATE		1				
022	266292-3	TAPPING SCREW 4X65		2				
023	210023-2	BALL BEARING 627DDW		1				
024	519173-3	ARMATURE ASS'Y 18V		1				
D10		INC. 23,25,26						
025	241869-5	FAN 55		1				
026	211061-7	BALL BEARING 6000LLB		1				
027	346059-6	SHAFT LOCK		1				
028	233092-6	COMPRESSION SPRING 5		1				
029	911118-1	PAN HEAD SCREW M4X12		2				
030	419284-3	BLOWER NOZZLE		1				
031	188045-9	BLADE CASE SET		1				
C10	213434-0	O RING 26		1				
D10		INC. 32						
032	819217-2	MAKITA LOGO PLATE		1				
033	262049-0	RUBBER RING 6		1				
034	251368-9	+ COUNTERSUNK SCREW M6		1	*			
034-1	265694-0	+ COUNTERSUNK HEAD SCREW M6	O	1				
035	210028-2	BALL BEARING 606ZZ		1				
036	961052-5	RETAINING RING S-12		1				
037	227156-6	SPUR GEAR 52		1				
038	257173-2	RING 12		1				
039	213512-6	O RING 39		1				

Please order the parts with part number.

Print Date 27/3/2020

Model No.DSS610 CORDLESS CIRCULAR SAW 165MM

Item	Parts No.	Description	I/C	Qty	New/Old	Opt. 1	Opt. 2	Note
040	265034-2	+ COUNTERSUNK HEAD SCREW M5X16		2				
041	318009-1	BEARING BOX		1				
042	211131-2	BALL BEARING 6001DDW		1				
043	324626-7	SPINDLE		1				
044	285845-9	BEARING RETAINER 19-29		1				
045	345469-4	THICKNESS RING		1				
046	231821-1	TENSION SPRING 3		1				
047	419286-9	SAFETY COVER		1				
048	961152-1	RETAINING RING (EXT) S-34		1				
049	224397-5	INNER FLANGE 40		1				
050	224282-2	OUTER FLANGE 40		1				
051	266133-3	HEX. SOCKET HEAD BOLT M6X20		1				
052	631694-6	LED CIRCUIT		1				
053	419341-7	CONNECTOR BOX		1				
054	419282-7	LIGHT COVER		1				
055	266026-4	TAPPING SCREW BIND CT 4X12		2				
056	961014-3	STOP RING E-8		1				
057	272229-0	LEVER 40		1				
058	252158-3	HEX.NUT M6		1				
059	941151-9	FLAT WASHER 6		1				
060	345658-1	DEPTH GUIDE		1				
061	252103-8	HEX. LOCK NUT M5-8		1				
062	345657-3	ANGULAR GUIDE		1				
063	317986-4	STOPPER		1				
064	213062-1	O RING 9		1				
065	265084-7	+ TRUSS HEAD SCREW M5		1				
066	266194-3	FLAT HEAD SCREW M6X90		1				
067	256480-0	SHOULDER PIN 6-7		1				
068	256480-0	SHOULDER PIN 6-7		1				
069	266264-8	H.S.SET SCREW(FLAT POINT)M5X6		1				
070	251919-8	CAP SQUARE NECK BOLT M6X20		1				
071	231007-7	COMPRESSION SPRING 6		1				
072	251896-4	SCREW M5X20		1				
073	941151-9	FLAT WASHER 6		1				
076	252133-9	HEX. NUT M6		1				
077	961014-3	STOP RING E-8		1				
078	272251-7	LEVER 30		1				
079	266264-8	H.S.SET SCREW(FLAT POINT)M5X6		1				
080	266229-0	H.S.SET SCREW(CUP POINT)M5X8		1				

Please order the parts with part number.

Print Date 27/3/2020

Model No.DSS610 CORDLESS CIRCULAR SAW 165MM

Item	Parts No.	Description	I/C	Qty	New/Old	Opt. 1	Opt. 2	Note
081	154832-8	BASE COMPLETE		1				
C10	816851-9	SCALE PLATE		1				
082	266229-0	H.S.SET SCREW(CUP POINT)M5X8		1				
083	419283-5	DUST NOZZLE		1				
084	911118-1	PAN HEAD SCREW M4X12		1				
085	253186-1	FLAT WASHER 7		1				
A01	164095-8	GUIDE RULE		1				
A02	783203-8	HEX. WRENCH 5		1				
A03	A-85101	T.C.T.SAW BLADE 165X24TX20		1				
A04C	141353-9	PLASTIC CARRYING CASE COMPLETE		1				
C10	163455-1	LATCH		2				
C20	419360-3	HANDLE		1				
A04D	141353-9	PLASTIC CARRYING CASE COMPLETE		1				
C10	163455-1	LATCH		2				
C20	419360-3	HANDLE		1				
A04F	821551-8	CONNECTOR PLASTIC CASE (TYPE3)		1				
C10	453974-8	LATCH		4				
A04G	821551-8	CONNECTOR PLASTIC CASE (TYPE3)		1				
C10	453974-8	LATCH		4				
A04H	821551-8	CONNECTOR PLASTIC CASE (TYPE3)		1				
C10	453974-8	LATCH		4				
A04J	821551-8	CONNECTOR PLASTIC CASE (TYPE3)		1				
C10	453974-8	LATCH		4				
A05C	***DC18RC	DC18RC FAST CHARGER		1				
A05D	***DC18RC	DC18RC FAST CHARGER		1				
A05F	***DC18RC	DC18RC FAST CHARGER		1				
A05G	837642-5	INNER TRAY		1				
A05H	***DC18RC	DC18RC FAST CHARGER		1				
A05J	***DC18RC	DC18RC FAST CHARGER		1				
A06C	194204-5	BATTERY BL1830 SET		1	*			
A06D	194204-5	BATTERY BL1830 SET		2	*			
A06F	194204-5	BATTERY BL1830 SET		2	*			
A06G	802U10-7	DSS610ZJ INDICATION LABEL		1				
A06H	196399-0	BATTERY BL1840 SET		2	*			
A06-1C	194204-5	BATTERY BL1830 SET	O	1	*			
A06-1D	194204-5	BATTERY BL1830 SET	O	2	*			
A06-1F	194204-5	BATTERY BL1830 SET	O	2	*			
A06-1H	196399-0	BATTERY BL1840 SET	O	2	*			
A06-2C	197600-6	BATTERY BL1830B SET	<	1	*			

Please order the parts with part number.

Print Date 27/3/2020

Model No.DSS610 CORDLESS CIRCULAR SAW 165MM

Item	Parts No.	Description	I/C	Qty	New/Old	Opt. 1	Opt. 2	Note
A06-2D	197600-6	BATTERY BL1830B SET	<	2	*			
A06-2F	197600-6	BATTERY BL1830B SET	<	2	*			
A06-2H	197265-4	BATTERY BL1840B SET	<	2	*			
A06-2J	197280-8	BATTERY BL1850B SET		2	*			
A06-3C	197600-6	BATTERY BL1830B SET	O	1				
A06-3D	197600-6	BATTERY BL1830B SET	O	2				
A06-3F	197600-6	BATTERY BL1830B SET	O	2				
A06-3H	197265-4	BATTERY BL1840B SET	O	2				
A06-3J	197280-8	BATTERY BL1850B SET	O	2				
A07C	802U19-9	DSS610RF PLASTIC CASE LABEL		1				
A07D	802U23-8	DSS610RFE PLASTIC CASE LABEL		1				
A07F	837642-5	INNER TRAY		1				
A07G	802U17-3	DSS610ZJ PLASTIC CASE LABEL		2				
A07H	837642-5	INNER TRAY		1				
A07J	837642-5	INNER TRAY		1				
A08D	450128-8	BATTERY COVER		1				
A08F	450128-8	BATTERY COVER		1				
A08H	450128-8	BATTERY COVER		1				
A08J	450128-8	BATTERY COVER		1				
A09F	802U09-2	DSS610RFJ INDICATION LABEL		1				
A09H	803S46-7	DSS610RMJ INDICATION LABEL		1				
A09J	808Y64-6	DSS610RTJ INDICATION LABEL		1				
A10F	802U22-0	DSS610RFJ PLASTIC CASE LABEL		2				
A10H	803S45-9	DSS610RMJ PLASTIC CASE LABEL		2				
A10J	810E02-6	DSS610RTJ PLASTIC CASE LABEL		2				
E01	620258-1	CONTROLLER		1				
E02	688163-8	LINE FILTER		1				

Please order the parts with part number.

Print Date 27/3/2020