

TP-LINK®

User Guide

TL-SG1016DE/TL-SG1024DE

16/24-port Gigabit Easy Smart Switch



REV1.0.2

1910010980

COPYRIGHT & TRADEMARKS

Specifications are subject to change without notice. **TP-LINK®** is a registered trademark of **TP-LINK TECHNOLOGIES CO., LTD.** Other brands and product names are trademarks or registered trademarks of their respective holders.

No part of the specifications may be reproduced in any form or by any means or used to make any derivative such as translation, transformation, or adaptation without permission from TP-LINK TECHNOLOGIES CO., LTD. Copyright © 2014 TP-LINK TECHNOLOGIES CO., LTD. All rights reserved.

<http://www.tp-link.com>

FCC STATEMENT



This equipment has been tested and found to comply with the limits for a Class A digital device, pursuant to part 15 of the FCC Rules. These limits are designed to provide reasonable protection against harmful interference when the equipment is operated in a commercial environment. This equipment generates, uses, and can radiate radio frequency energy and, if not installed and used in accordance with the instruction manual, may cause harmful interference to radio communications. Operation of this equipment in a residential area is likely to cause harmful interference in which case the user will be required to correct the interference at his own expense.

This device complies with part 15 of the FCC Rules. Operation is subject to the following two conditions:

- 1) This device may not cause harmful interference.
- 2) This device must accept any interference received, including interference that may cause undesired operation.

Any changes or modifications not expressly approved by the party responsible for compliance could void the user's authority to operate the equipment.

CE Mark Warning



This is a class A product. In a domestic environment, this product may cause radio interference, in which case the user may be required to take adequate measures.



Продукт сертифіковано згідно с правилами системи УкрСЕПРО на відповідність вимогам нормативних документів та вимогам, що передбачені чинними законодавчими актами України.



Safety Information

- When product has power button, the power button is one of the way to shut off the product; When there is no power button, the only way to completely shut off power is to disconnect the product or the power adapter from the power source.
- Don't disassemble the product, or make repairs yourself. You run the risk of electric shock and voiding the limited warranty. If you need service, please contact us.
- Avoid water and wet locations.

This product can be used in the following countries:

AT	BG	BY	CA	CZ	DE	DK	EE
ES	FI	FR	GB	GR	HU	IE	IT
LT	LV	MT	NL	NO	PL	PT	RO
RU	SE	SK	TR	UA			

CONTENTS

Package Contents	1
Chapter 1 About this Guide.....	2
1.1 Intended Readers	2
1.2 Conventions.....	2
1.3 Overview of This Guide	2
Chapter 2 Introduction	4
2.1 Overview of the Switch	4
2.2 Main Features.....	4
2.3 Appearance Description	4
2.3.1 Front Panel	4
2.3.2 Rear Panel	5
Chapter 3 Login to the Switch.....	6
3.1 Login.....	6
3.2 Configuration	6
Chapter 4 System	8
4.1 System Info.....	8
4.2 IP Setting	8
4.3 User Account	9
4.4 Switching	10
4.4.1 Port Setting	10
4.4.2 IGMP Snooping.....	12
4.4.3 Port Trunk	12
4.5 Monitoring.....	14
4.5.1 Port Statistics	14
4.5.2 Port Mirror	15
4.5.3 Cable Test	17
4.5.4 Loop Prevention.....	18
4.6 System Tools	18
4.6.1 Backup and Restore	18
4.6.2 System Reboot	19
4.6.3 System Reset.....	20
4.6.4 Firmware Upgrade	20
Chapter 5 VLAN.....	22
5.1 MTU VLAN	23
5.2 Port Based VLAN.....	24
5.3 802.1Q VLAN.....	25

5.4	802.1Q PVID Setting	27
Chapter 6	QoS.....	29
6.1	QoS Basic.....	30
6.2	Bandwidth Control	32
6.3	Storm Control.....	33
Appendix A:	Specifications	36
Appendix B:	Configuring the PCs	37

Package Contents

The following items should be found in your box:

- One 16/24-port Gigabit Easy Smart Switch
- One power cord
- Two mounting brackets and other fittings
- Installation Guide
- Resource CD for TL-SG1016DE/TL-SG1024DE switch, including:
 - This User Guide
 - Easy Smart Configuration Utility.exe
 - Easy Smart Configuration Utility User Guide
 - Other Helpful Information



Note:

Make sure that the package contains the above items. If any of the listed items are damaged or missing, please contact your distributor.

Chapter 1 About this Guide

This User Guide contains information for setup and management of TL-SG1016DE/TL-SG1024DE 16/24-port Gigabit Easy Smart Switch. Please read this guide carefully before operation.

1.1 Intended Readers

This Guide is intended for network managers familiar with IT concepts and network terminologies.

1.2 Conventions

In this Guide the following conventions are used:

- The switch or TL-SG1016DE/TL-SG1024DE mentioned in this Guide stands for TL-SG1016DE/TL-SG1024DE 16/24-port Gigabit Easy Smart Switch without any explanation.





Tips:

The two devices of TL-SG1016DE and TL-SG1024DE are sharing this User Guide. For simplicity, we will take the operation on TL-SG1016DE for example throughout the configuration chapters. TL-SG1016DE and TL-SG1024DE just differ in the number of LED indicators and ports and all figures in this guide are of TL-SG1016DE.

- **Menu Name**→**Submenu Name**→**Tab page** indicates the menu structure. **System**→**System Info**→**System Summary** means the System Summary page under the System Info menu option that is located under the System menu.
- **Bold font** indicates a button, a toolbar icon, menu or menu item.

Symbols in this Guide:

Symbol	Description
 Note:	Ignoring this type of note might result in a malfunction or damage to the device.
 Tips:	This format indicates important information that helps you make better use of your device.

1.3 Overview of This Guide

Chapter	Introduction
Chapter 1 About This Guide	Introduces the guide structure and conventions.
Chapter 2 Introduction	Introduces the features, application and appearance of TL-SG1016DE/TL-SG1024DE switch.

Chapter	Introduction
Chapter 3 Login to the Switch	Introduces how to log on to the Web management page.
Chapter 4 System	<p>This module is used to configure system properties of the switch. Here mainly introduces:</p> <ul style="list-style-type: none"> ● System Info: View device information and define the device description. ● IP Setting: Get and modify the network parameters of the switch. ● User Account: Modify the username and password for users to log on to the Web management page. ● Switching: Configure the basic functions of the switch. ● Monitoring: Monitor the traffic information of the switch, and provide the convenient method to locate and solve the network problem. ● System Tools: Manage the configuration file of the switch.
Chapter 5 VLAN	<p>This module is used to configure VLANs to control broadcast in LANs. Here mainly introduces:</p> <ul style="list-style-type: none"> ● MUT VLAN: Set the MTU VLAN mode. ● Port Based VLAN: Set the Port-Based VLAN mode ● 802.1Q VLAN: Set the 802.1Q Tag VLAN mode. ● 802.1Q PVID Setting: Configure 802.1Q PVID value.
Chapter 6 QoS	<p>This module is used to configure QoS function to provide different quality of service for various network applications and requirements. Here mainly introduces:</p> <ul style="list-style-type: none"> ● QoS Basic: Configure and view the basic parameters of QoS. ● Bandwidth Control: Configure and view the bandwidth control function information. ● Storm Control: Configure and view the storm control function information.
Appendix A Specifications	Lists the hardware specifications of the switch.
Appendix B Configure the PCs	Introduces how to configure the PCs.

[Return to CONTENTS](#)

Chapter 2 Introduction

Thanks for choosing the TL-SG1016DE/TL-SG1024DE 16/24-port Gigabit Easy Smart Switch!

2.1 Overview of the Switch

The TL-SG1016DE/TL-SG1024DE 16/24-port Gigabit Easy Smart Switch is an ideal upgrade from an unmanaged switch, designed for Small and Medium Business networks that require simple network management. Network administrators can effectively monitor traffic via Port Mirroring, Loop Prevention and Cable Test features. To optimize traffic on your business network, they offer both port and tag based QoS to keep latency-sensitive traffic moving smoothly and jitter-free. Additionally, port-based, tag-based and MTU VLAN can improve security and meet more network segmentation requirements. Moreover, with the innovative energy-efficient technology, they are eco-friendly solution for your business network.

2.2 Main Features

- **Resiliency and Availability**
 - + Multicast snooping automatically prevents flooding of IP multicast traffic.
- **Layer 2 Switching**
 - + Supports up to 32 VLANs simultaneously (out of 4K VLAN IDs).
- **Quality of Service**
 - + Supports L2/L3 granular CoS with 4 priority queues per port.
 - + Rate limiting confines the traffic flow accurately according to the preset value.
- **Manageability**
 - + Supports Easy Smart Configuration Utility for central configuration and management.
 - + Supports web access.
 - + Port Mirroring enables monitoring selected ingress/egress traffic.



Note:

For details about Easy Smart Configuration Utility, please refer to the User Guide of the Easy Smart Configuration Utility in the Resource CD.

2.3 Appearance Description

2.3.1 Front Panel

The front panel of TL-SG1016DE is shown as Figure 2-1.

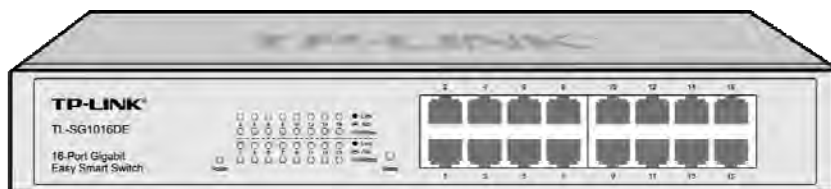


Figure 2-1 Front Panel of TL-SG1016DE

The front panel of TL-SG1024DE is shown as Figure 2-2.

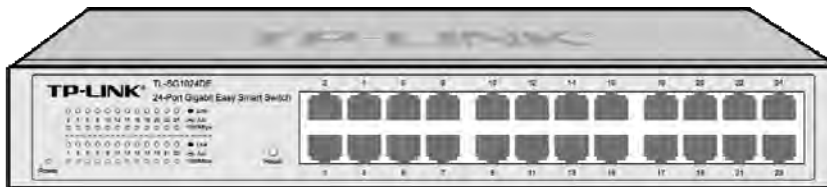


Figure 2-2 Front Panel of TL-SG1024DE

The following parts are located on the front panel of the switch:

- **Reset:** With the switch powered on, press this button for five seconds or above to reset the software setting back to factory default setting.
- **1000Mbps Ports:** Designed to connect to the device with a bandwidth of 10Mbps, 100Mbps or 1000Mbps. Each has a corresponding 1000Mbps LED and link/Act LED.
- **LEDs**

Name	Status	Indication
Power	On	Power is on.
	Flashing	Power supply is abnormal.
	Off	Power is off or power supply is abnormal.
1000Mbps	On	A 1000Mbps device is connected to the corresponding port.
	Off	A 10/100Mbps device or no device is connected to the corresponding port.
Link/Act	On	A device is connected to the corresponding port but no activity.
	Flashing	Data is being transmitted or received.
	Off	No device is connected to the corresponding port.

2.3.2 Rear Panel

The rear panel of TL-SG1016DE/TL-SG1024DE features a power socket and a Grounding Terminal (marked with ⊕).

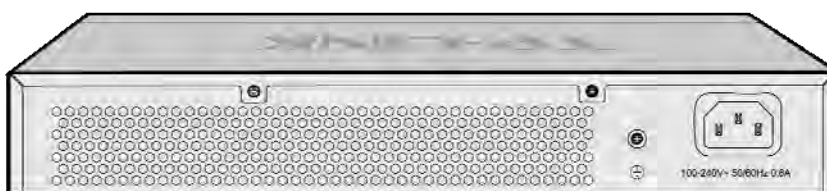


Figure 2-3 Rear Panel of TL-SG1016DE

- **Grounding Terminal:** TL-SG1016DE/TL-SG1024DE already comes with Lightning Protection Mechanism. You can also ground the switch through the PE (Protecting Earth) cable of AC cord or with Ground Cable.
- **AC Power Socket:** Connect the female connector of the power cord here, and the male connector to the AC power outlet. Please make sure the voltage of the power supply meets the requirement of the input voltage (100-240V~ 50/60Hz 0.6A).

[Return to CONTENTS](#)

Chapter 3 Login to the Switch

3.1 Login

- 1) To access the configuration utility, open a web-browser and type the default address `http://192.168.0.1` in the address field of the browser, then press the **Enter** key.



Figure 3-1 Web-browser



Tips:

To log in to the switch, the IP address of your PC should be set in the same subnet addresses of the switch. The IP address is `192.168.0.x` ("x" is any number from 2 to 254), Subnet Mask is `255.255.255.0`. For the detailed instructions as to how to do this, please refer to [Appendix B](#).

- 2) After a moment, a login window will appear, as shown in Figure 3-2. Enter **admin** for the User Name and Password, both in lower case letters. Then click the **Login** button or press the **Enter** key.

A screenshot of the TP-LINK login interface. At the top, there is a dark blue header with the 'TP-LINK' logo in white. Below the header, the page has a light blue background. There are two input fields: 'User Name:' with 'admin' entered, and 'Password:' with six dots. Below these fields are two buttons: 'Login' and 'Clear'.

Figure 3-2 Login

3.2 Configuration

After a successful login, the main page will appear as Figure 3-3, and you can configure the function by clicking the setup menu on the left side of the screen.

TP-LINK

TL-SG1016DE

System
 VLAN
 QoS
Save Config
 Logout

Copyright © 2013
 TP-LINK Technologies Co.,
 Ltd. All rights reserved.

System Info

Device Description	TL-SG1016DE
MAC Address	00:10:18:55:44:4b
IP Address	192.168.0.1
Subnet Mask	255.255.255.0
Default Gateway	
Firmware Version	1.0.0 Build 20130301 Rel.39655
Hardware Version	TL-SG1016DE 1.0

Device Description:

Note:
 The length of device description should not be more than 32 characters.

Figure 3-3 Main Setup-Menu

 **Note:**

Clicking **Apply** can only make the new configurations effective before the switch is rebooted. If you want to keep the configurations effective even the switch is rebooted, please click **Save Config**. You are suggested to click **Save Config** before cutting off the power or rebooting the switch to avoid losing the new configurations.

[Return to CONTENTS](#)

Chapter 4 System

The System module is mainly for basic settings of the switch, including six submenus: **System Info**, **IP Setting**, **User Account**, **Switching**, **Monitoring** and **System Tools**.

4.1 System Info

On this page you can view the system information and define the device description.

Choose the menu **System**→**System Info** to load the following page.

System Info

Device Description	TL-SG1016DE
MAC Address	00:10:18:55:44:4b
IP Address	192.168.0.1
Subnet Mask	255.255.255.0
Default Gateway	
Firmware Version	1.0.0 Build 20130301 Rel.39655
Hardware Version	TL-SG1016DE 1.0

Device Description

Note:
The length of device description should not be more than 32 characters.

Figure 4-1 System Info

The following entries are displayed on this screen:

➤ System Info

- Device Description:** Displays the device model number.
- MAC Address:** Displays the MAC address of the switch.
- IP Address:** Displays the system IP address of the switch. The default system IP is 192.168.0.1 and you can change it appropriate to your needs.
- Subnet Mask:** Displays the subnet mask of the switch.
- Default Gateway:** Displays the default gateway of the switch.
- Firmware Version:** Displays the installed software version number.
- Hardware Version:** Displays the installed device hardware version number.
- Device Description:** Give a description to the device for identification.

4.2 IP Setting

Each device in the network possesses a unique IP Address. You can log on to the Web management page to operate the switch using this IP Address.

On this page you can get and modify the network parameters of the switch.

Choose the menu **System**→**IP Setting** to load the following page.

IP Address Setting

DHCP Setting	Disable ▾
IP Address	192.168.0.1
Subnet Mask	255.255.255.0
Default Gateway	

Apply Help

Figure 4-2 IP Address Setting

The following entries are displayed on this screen:

➤ **IP Address Setting**

DHCP Setting:

Allows you to enable or disable the switch to serve as DHCP client. If DHCP client is enabled, the switch will obtain the IP address, subnet mask and default gateway from the DHCP server automatically; otherwise, these three items should be configured manually. By default, it is disabled.

IP Address:

Specify the system IP address of the switch. The default system IP address is 192.168.0.1 and you can change it appropriate to your needs. The switch IP address must be compliant with the subnet layout.

Subnet Mask:

Enter the subnet mask of the switch. Subnet mask is an address code that determines the size of the network. By default, the switch uses 255.255.255.0 as the subnet mask.

Default Gateway:

Enter the default gateway of the switch. Gateway serves as the default destination where the packet is to be forwarded when its destination IP address is not within the switch's subnet.



Note:

1. The switch only possesses an IP address. The IP address newly configured will replace the original one.
2. Changing the IP address to a different IP segment will interrupt the network communication, so please keep the new IP address in the same IP segment with the local network.

4.3 User Account

On this page you can modify the username and password in order to refuse illegal users.

Choose the menu **System**→**User Account** to load the following page.

User Account Setting

New Username	admin
Old Password	
New Password	
Confirm Password	

Apply

Help

Note:

The length of user name and password should not be more than 16 characters using digits, English letters and underlines only.

Figure 4-3 User Account Setting

You are kindly suggested to retype the new password in "Confirm Password" box instead of copying in order to avoid mistakes.

**Note:**

1. The length of user name and password should not be more than 16 characters using digits, English letters and underlines only.
2. The default username/password is admin/admin.

4.4 Switching

Switching module is used to configure the basic functions of the switch, including three submenus: **Port Setting**, **IGMP Snooping** and **Port Trunk**.

4.4.1 Port Setting

On this page, you can configure and view the basic parameters of each port, including the port status, speed, duplex mode and flow control. As the parameters will affect the working mode of the port, please set the parameters appropriate to your needs.

Choose the menu **System**→**Switching**→**Port Setting** to load the following page.

Port Setting

Port	Status	Speed/Duplex	Flow Control
Port 1			
Port 2			
Port 3			
Port 4			
Port 5			

Port	Status	Speed/Duplex		Flow Control	
		Config	Actual	Config	Actual
Port 1	Enabled	Auto	Link Down	Off	Off
Port 2	Enabled	Auto	Link Down	Off	Off
Port 3	Enabled	Auto	Link Down	Off	Off
Port 4	Enabled	Auto	100Full	Off	Off
Port 5	Enabled	Auto	Link Down	Off	Off
Port 6	Enabled	Auto	Link Down	Off	Off
Port 7	Enabled	Auto	Link Down	Off	Off
Port 8	Enabled	Auto	Link Down	Off	Off
Port 9	Enabled	Auto	100Full	Off	Off
Port 10	Enabled	Auto	Link Down	Off	Off
Port 11	Enabled	Auto	Link Down	Off	Off
Port 12	Enabled	Auto	Link Down	Off	Off
Port 13	Enabled	Auto	Link Down	Off	Off
Port 14	Enabled	Auto	Link Down	Off	Off
Port 15	Enabled	Auto	Link Down	Off	Off
Port 16	Enabled	Auto	Link Down	Off	Off

Figure 4-4 Port Setting

The following entries are displayed on this screen:

> Port Setting

- Port:** Select the desired port for configuration. It is multi-optional.
- Status:** Allows you to enable or disable the port. "Enable" indicates that the port is operational and "Disable" indicates the port is non-operational. If a port is unused for a long time, its status can be set to "Disable" to cut down the energy cost.
- Speed/Duplex:** Select the Speed and Duplex mode for the port. The device connected to the switch should be in the same Speed and Duplex mode with the switch. Available field values are "Auto", "10M HD", "10M FD", "100M HD", "100M FD" and "1000M FD". "HD" stands for Half-Duplex and "FD" stands for Full-Duplex. "Auto" means auto negotiation.
- Flow Control:** Allows you to On/Off the Flow Control feature. When "On" is selected, the switch can synchronize the speed with its peer to avoid the packet loss caused by congestion.

**Note:**

The switch cannot be managed through the disabled port. Please enable the port which is used to manage the switch.

4.4.2 IGMP Snooping

Internet Group Management Protocol (IGMP) snooping is a multicast control mechanism, which can be used on the switch for dynamic registration of the multicast group.

IGMP Snooping allows the switch to recognize the IGMP messages transmitted between network stations or devices and an IGMP host. When receiving IGMP report message from the IGMP host, the switch will add the port to the multicast address table; when listening to IGMP leave message from the IGMP host, the switch will remove the port from the multicast address table. By managing and controlling the multicast address table, the broadcasting of multicast traffic can be effectively prevented in the network.

On this page you can enable IGMP snooping feature and view the current IGMP Group information.

Choose the menu **System**→**Switching**→**IGMP Snooping** to load the following page.

IP Address	VLAN ID	Ports
------------	---------	-------

Figure 4-5 IGMP Snooping

The following entries are displayed on this screen:

➤ **IGMP Snooping**

- IGMP Snooping:** Enable or disable IGMP snooping function globally on the switch.
- IP Address:** Displays the multicast IP address.
- VLAN ID:** Displays the VLAN ID of the multicast group. If the packet does not carry VLAN ID, then here displays the PVID of the port. All port members of a multicast group should be divided to the same VLAN, and have the same PVID.
- Ports:** Displays the forwarding port list of the multicast group.

4.4.3 Port Trunk

Port trunk is used to combine a number of ports together to make a single high-bandwidth data path, which can highly extend the bandwidth. The bandwidth of the trunk is the sum of bandwidth of its member ports.

There are some rules on using trunk:

- For the member ports in a trunk group, their configuration of **Port setting (Speed and Duplex, Flow Control)**, **QoS** must be the same.

- For the newly joined member ports in a trunk group, their default setting of **Port setting (Speed and Duplex, Flow Control), QoS** will be configured the same as that of the first member port in the trunk group.
- The trunk member ports cannot be set as mirroring port.
- Before setting the trunk, its member ports should be divided to the same VLAN, and have the same PVID and drop the untagged packet rule. Change of the trunk setting will not affect the VLAN setting.

If the port trunk is needed, you are suggested to configure the port trunk function here before configuring the other functions for the member ports.

On this page, you can configure and view the information of the trunk group of the switch.

Choose the menu **System**→**Switching**→**Port Trunk** to load the following page.

Trunk Group Setting

Group ID	Port
Trunk1 ▼	Port 1 ▲ Port 2 ▢ Port 3 Port 4 Port 5 ▼

Group ID	Ports	Select
Trunk 1	----	<input type="checkbox"/>
Trunk 2	----	<input type="checkbox"/>
Trunk 3	----	<input type="checkbox"/>
Trunk 4	----	<input type="checkbox"/>
Trunk 5	----	<input type="checkbox"/>
Trunk 6	----	<input type="checkbox"/>
Trunk 7	----	<input type="checkbox"/>
Trunk 8	----	<input type="checkbox"/>

Note:

1. You can create up to eight trunk groups.
2. Each trunk group has up to four port members.
3. Mirroring port cannot be added to a trunk group.
4. If you select a member of other trunks, the member you selected will be ignored.

Figure 4-6 Trunk Group Setting

Here you can configure and view the port parameters.

➤ **Trunk Group Setting**

Group ID: Select an identified number for the trunk group from the drop-down list.

Port: Select the port as the trunk group member. It is multi-optional. Clearing all the ports of the trunk group will delete this trunk group.



Tips:

Calculate the bandwidth for a trunk group: If a trunk consists of the four ports whose Speed/Duplex mode is 1000Mbps/Full Duplex, the whole bandwidth of the trunk group is up to 8000Mbps (2000Mbps * 4) because the bandwidth of each member port is 2000Mbps counting the up-linked speed of 1000Mbps and the down-linked speed of 1000Mbps.

4.5 Monitoring

Monitoring module monitors the traffic information of the switch, and provides the convenient method to locate and solve the network problem, includes four submenus: **Port Statistics**, **Port Mirror**, **Cable Test** and **Loop Prevention**.

4.5.1 Port Statistics

On this page you can view the statistic information of each port, which facilitates you to monitor the traffic and locate faults promptly.

Choose the menu **System**→**Monitoring**→**Port Statistics** to load the following page.

Port Statistics Info

Port	Status	Link Status	TxGoodPkt	TxBadPkt	RxGoodPkt	RxBadPkt
Port 1	Enabled	Link Down	0	0	0	0
Port 2	Enabled	Link Down	0	0	0	0
Port 3	Enabled	Link Down	0	0	0	0
Port 4	Enabled	100Full	325493	0	673261	0
Port 5	Enabled	Link Down	0	0	0	0
Port 6	Enabled	Link Down	0	0	0	0
Port 7	Enabled	Link Down	0	0	0	0
Port 8	Enabled	Link Down	0	0	0	0
Port 9	Enabled	100Full	619953	0	326144	0
Port 10	Enabled	Link Down	0	0	0	0
Port 11	Enabled	Link Down	0	0	0	0
Port 12	Enabled	Link Down	0	0	0	0
Port 13	Enabled	Link Down	0	0	0	0
Port 14	Enabled	Link Down	0	0	0	0
Port 15	Enabled	Link Down	0	0	0	0
Port 16	Enabled	Link Down	0	0	0	0

Figure 4-7 Port Statistics Info

The following entries are displayed on this screen:

➤ **Port Statistics Info**

Port: Displays the port number of the switch.

Status: Displays whether the port is enabled or disabled.

Link Status:	Displays whether the port is link up or link down.
TxGoodPkt:	Displays the number of good packets transmitted on the port. The error packets are not counted in.
TxBadPkt:	Displays the number of error packets transmitted on the port.
RxGoodPkt:	Displays the number of good packets received on the port. The error packets are not counted in.
RxBadPkt:	Displays the number of error packets received on the port.

4.5.2 Port Mirror

Port mirror functions to monitor and mirror network traffic by forwarding copies of incoming and outgoing packets from one/multiple ports (mirrored port) to a specific port (mirroring port). Usually, the mirroring port is connected to a data diagnosis device, which is used to analyze the mirrored packets for monitoring and troubleshooting the network.

Choose the menu **System**→**Monitoring**→**Port Mirror** to load the following page.

Port Mirror

Port Mirror	Mirroring Port
Disable ▾	▾

Apply

Mirrored Port

Mirrored Port	Ingress	Egress
Port 1 ▲ Port 2 ▢ Port 3 Port 4 Port 5 ▼	▾	▾

Apply Help

Mirrored Port	Ingress	Egress
Port1	Disable	Disable
Port2	Disable	Disable
Port3	Disable	Disable
Port4	Disable	Disable
Port5	Disable	Disable
Port6	Disable	Disable
Port7	Disable	Disable
Port8	Disable	Disable
Port9	Disable	Disable
Port10	Disable	Disable
Port11	Disable	Disable
Port12	Disable	Disable
Port13	Disable	Disable
Port14	Disable	Disable
Port15	Disable	Disable
Port16	Disable	Disable

Figure 4-8 Port Mirror

The following entries are displayed on this screen:

➤ **Port Mirror**

Port Mirror: Allows you to enable or disable the port mirror feature of the specified port.

Mirroring Port: Select a port from the pull-down list as the mirroring port.

➤ **Mirrored Port**

Mirrored Port: Select a port from the pull-down list as the mirrored port to monitor the traffic. Trunk member cannot be defined here. It is multi-optional.

Ingress: Select whether to monitor the ingress traffic. When the ingress is enabled, the ingress traffic received by the mirrored port will be copied to the mirroring port.

Egress: Select whether to monitor the egress traffic. When the egress is enabled, the outgoing packets sent by the mirrored port will be copied to the mirroring port.



Note:

1. The trunk member cannot be selected as the mirroring port.
2. A port cannot be set as the mirrored port and the mirroring port simultaneously.
3. The port mirror function can take effect span the multiple VLANs.

4.5.3 Cable Test

This switch provides cable test to diagnose the connection status of the cable connected to the switch and the distance to the problem location, which facilitates you to locate and diagnose the trouble spot of the network.

Choose the menu **System**→**Monitoring**→**Cable Test** to load the following page.

Cable Test

Select	Port	Test Result	Cable Fault Distance(m)
<input type="checkbox"/>	Port 1	--	--
<input type="checkbox"/>	Port 2	--	--
<input type="checkbox"/>	Port 3	--	--
<input type="checkbox"/>	Port 4	--	--
<input type="checkbox"/>	Port 5	--	--
<input type="checkbox"/>	Port 6	--	--
<input type="checkbox"/>	Port 7	--	--
<input type="checkbox"/>	Port 8	--	--
<input type="checkbox"/>	Port 9	--	--
<input type="checkbox"/>	Port 10	--	--
<input type="checkbox"/>	Port 11	--	--
<input type="checkbox"/>	Port 12	--	--
<input type="checkbox"/>	Port 13	--	--
<input type="checkbox"/>	Port 14	--	--
<input type="checkbox"/>	Port 15	--	--
<input type="checkbox"/>	Port 16	--	--

Figure 4-9 Cable Test

The following entries are displayed on this screen:

➤ **Cable Test**

Select: Click the check box to select the desired port for cable test. It is multi-optional.

Port: Displays the port number of the switch.

Test Result: Displays the connection status of the cable connected to the port. The test results of the cable include “No Cable”, “Open”, “Short”, “Open Short”, “Normal”, “Cro Cable” and “others”.

Cable Fault Distance(m): Displays the error length (in meters) of the cable.



Note:

The test result is just for your reference.

4.5.4 Loop Prevention

With loop prevention feature enabled, the switch can detect loops using loop detection packets. When a loop is detected, the switch will block the corresponding port automatically.

Choose the menu **System**→**Monitoring**→**Loop Prevention** to load the following page.

Loop Prevention Setting

Loop Prevention	Disable ▾
Apply	Help

Note:
When a loop is detected on a specific port, the port will be automatically blocked.

Figure 4-10 Loop Function Setting

The following entries are displayed on this screen:

➤ **Loop Prevention Setting**

Loop Prevention: Allows you to enable or disable loop prevention function globally.

4.6 System Tools

The System Tools function, allowing you to manage the configuration file of the switch, can be implemented on **Backup and Restore**, **System Reboot**, **System Reset** and **Firmware Upgrade** pages.

4.6.1 Backup and Restore

On this page you can download the current configuration and save it as a file to your computer for your future configuration to upload a backup configuration file to restore your switch to this previous configuration.

Choose the menu **System**→**System Tools**→**Backup and Restore** to load the following page.

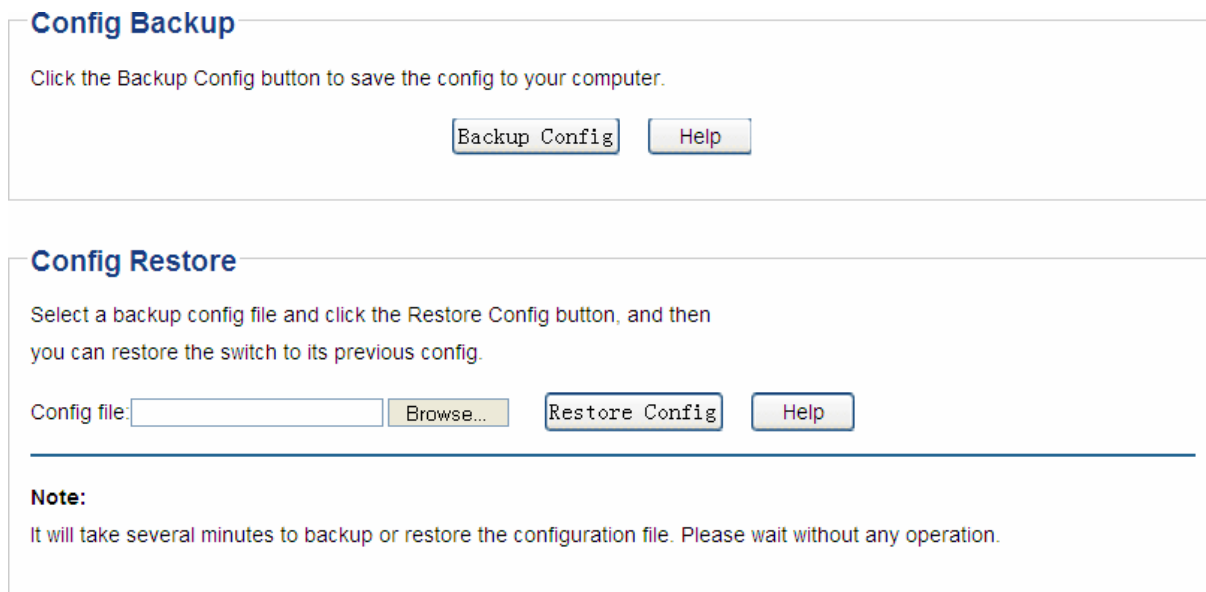


Figure 4-11 Backup and Restore

The following entries are displayed on this screen:

➤ **Config Backup**

Backup Config:

Click the **Backup Config** button to save the current configuration as a file to your computer. You are suggested to take this measure before upgrading.

➤ **Config Restore**

Restore Config:

Click the **Restore Config** button to restore the backup configuration file. It will take effect after the switch automatically reboots.



Note:

1. It will take a few minutes to backup the configuration. Please wait without any operation.
2. It will take a few minutes to restore the configuration. Please wait without any operation.
3. To avoid any damage, please don't power down the switch while being restored.
4. After being restored, the current settings of the switch will be lost. Wrong uploaded configuration file may cause the switch unmanaged.

4.6.2 System Reboot

On this page you can reboot the switch and return to the login page. Please save the current configuration before rebooting to avoid losing the configuration unsaved.

Choose the menu **System**→**System Tools**→**System Reboot** to load the following page.

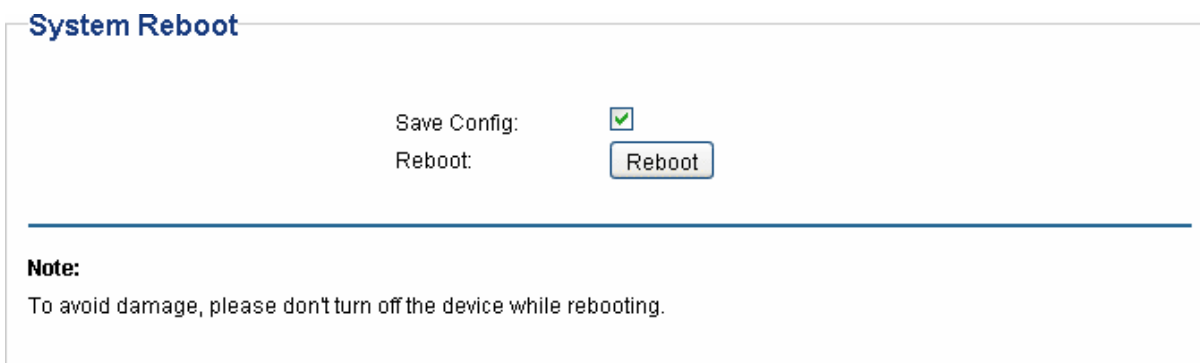
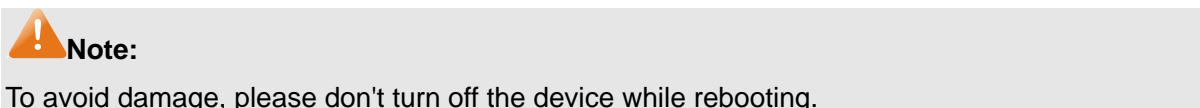


Figure 4-12 System Reboot



4.6.3 System Reset

On this page you can reset the switch to the default. All the settings will be cleared after the switch is reset.

Choose the menu **System**→**System Tools**→**System Reset** to load the following page.

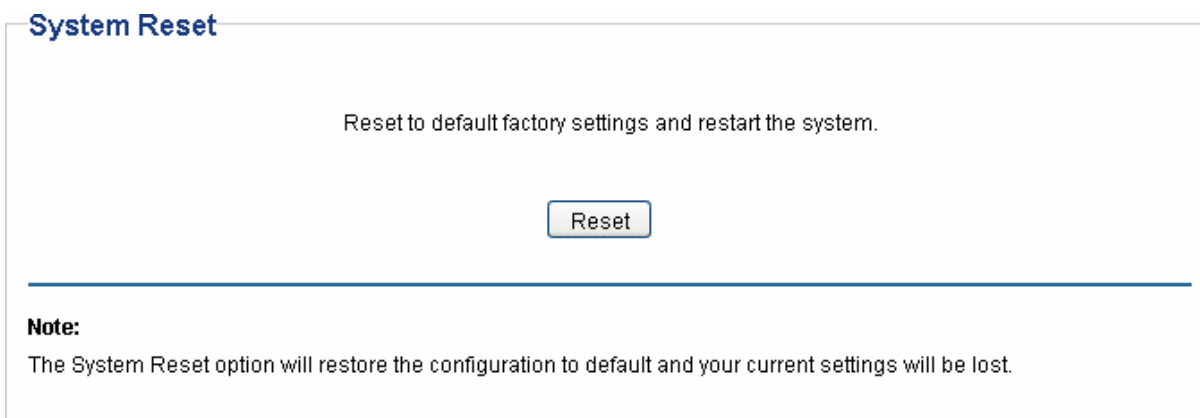
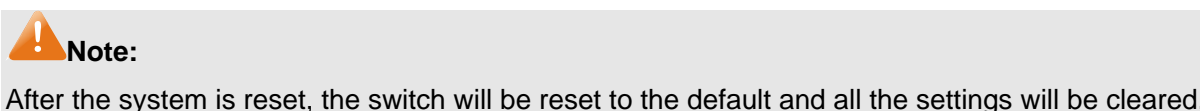


Figure 4-13 System Reset



4.6.4 Firmware Upgrade

The switch system can be upgraded via the Web management page. To upgrade the system is to get more functions and better performance. Go to <http://www.tp-link.com> to download the updated firmware.

Choose the menu **System**→**System Tools**→**Firmware Upgrade** to load the following page.

Firmware Upgrade

Ready to upgrade new firmware?
Rebooting is required for firmware upgrade.

Ready

Note:

1. To avoid damage, please don't turn off the device while upgrading.
2. You are suggested to backup the configuration before upgrading.

Figure 4-14 Firmware Upgrade

**Note:**

1. Don't interrupt the upgrade.
2. You are suggested to backup the configuration before upgrading.
3. Please select the proper software version matching with your hardware to upgrade.
4. To avoid damage, please don't turn off the device while upgrading.
5. After upgrading, the device will reboot automatically.

[Return to CONTENTS](#)

Chapter 5 VLAN

The traditional Ethernet is a data network communication technology based on CSMA/CD (Carrier Sense Multiple Access/Collision Detect) via shared communication medium. Through the traditional Ethernet, the overfull hosts in LAN will result in serious collision, flooding broadcasts, poor performance or even breakdown of the Internet. Though connecting the LANs through switches can avoid the serious collision, the flooding broadcasts cannot be prevented, which will occupy plenty of bandwidth resources, causing potential serious security problems.

A Virtual Local Area Network (VLAN) is a network topology configured according to a logical scheme rather than the physical layout. The VLAN technology is developed for switches to control broadcast in LANs. By creating VLANs in a physical LAN, you can divide the LAN into multiple logical LANs, each of which has a broadcast domain of its own. Hosts in the same VLAN communicate with one another as if they are in a LAN. However, hosts in different VLANs cannot communicate with one another directly. Therefore, broadcast packets are limited in a VLAN. Hosts in the same VLAN communicate with one another via Ethernet whereas hosts in different VLANs communicate with one another through the Internet devices such as router, the Layer 3 switch, etc. The following figure illustrates a VLAN implementation.

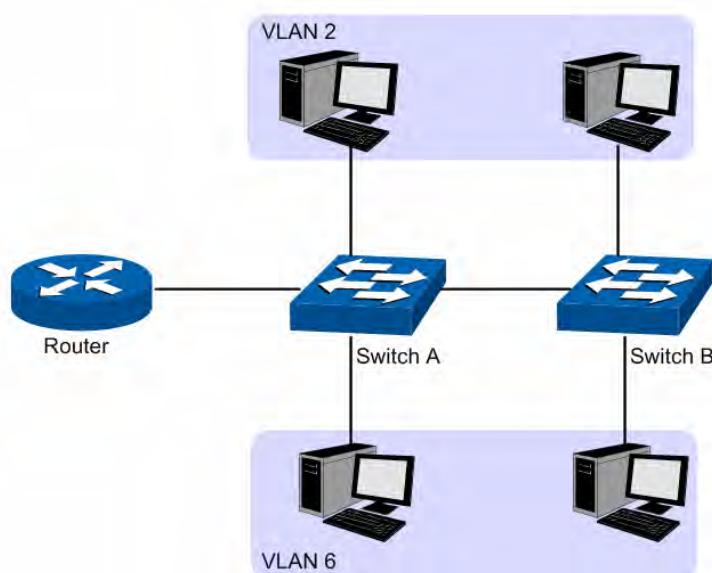


Figure 5-1 VLAN implementation

Compared with the traditional Ethernet, VLAN enjoys the following advantages.

- (1) Broadcasts are confined to VLANs. This decreases bandwidth utilization and improves network performance.
- (2) Network security is improved. VLANs cannot communicate with one another directly. That is, a host in a VLAN cannot access resources in another VLAN directly, unless routers or Layer 3 switches are used.
- (3) Network configuration workload for the host is reduced. VLAN can be used to group specific hosts. When the physical position of a host changes within the range of the VLAN, you do not need to change its network configuration.

There are 3 types of VLAN modes supported in the switch:

1. MTU VLAN

MTU VLAN (Multi-Tenant Unit VLAN) defines an uplink port which will build up several VLANs with each of the other ports. Each VLAN contains two ports, the uplink port and one of the other ports in the switch, so the uplink port can communicate with any other port but other ports cannot communicate with each other.

2. Port Based VLAN

VLANs are divided based on ports. By default, the Port Based VLAN is enabled.

3. 802.1Q VLAN

The IEEE 802.1Q protocol defines a new format of the frame; it adds a Tag header in the original Ethernet frame, as follows:

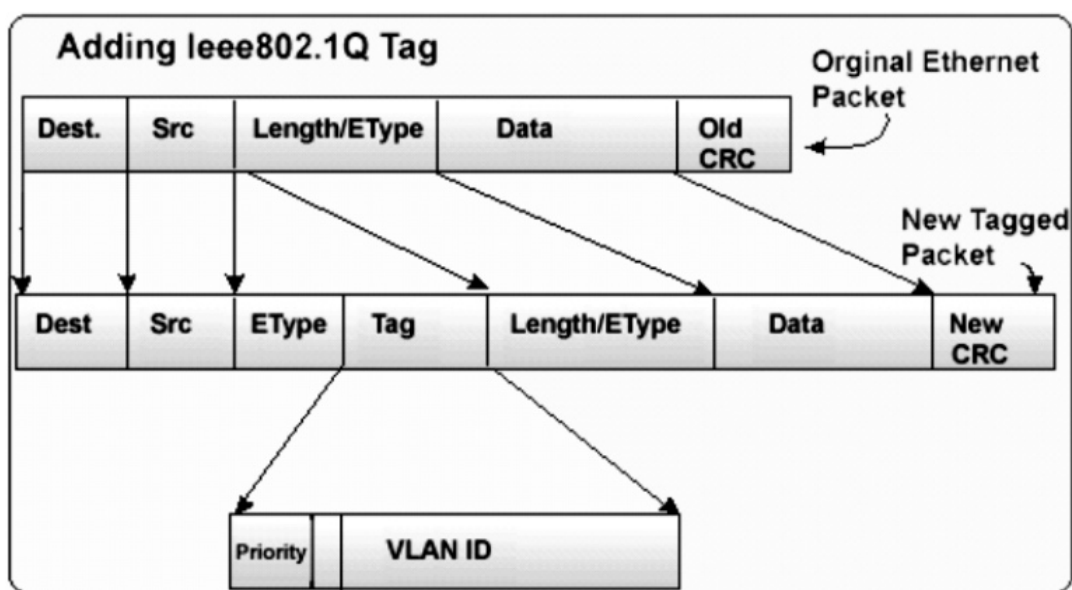


Figure 5-2 IEEE 802.1Q frame

VLAN tags in the packets are necessary for the switch to identify packets of different VLANs. The switch works at the data link layer in OSI model and it can identify the data link layer encapsulation of the packet only, so you can add the VLAN tag field into the data link layer encapsulation for identification.

IEEE 802.1Q Tag VLAN is divided by VLAN ID (VID). On receiving a frame, the switch checks the VID in the Tag header of the frame to decide which VLAN it belongs to. If the receiving frame doesn't contain the Tag header, the switch will assign a Tag to the frame, using the PVID of the port as its VID.

In this User Guide, the tagged packet refers to the packet with VLAN tag whereas the untagged packet refers to the packet without VLAN tag.

The VLAN module is mainly for VLAN configuration, including four submenus: **MTU VLAN**, **Port Based VLAN**, **802.1Q VLAN** and **802.1Q PVID Setting**.

5.1 MTU VLAN

On this page you can choose to enable MTU VLAN mode and configure VLANs.

Choose the menu **VLAN**→**MTU VLAN** to load the following page.


MTU VLAN Configuration

MTU VLAN Configuration: Enable Disable

Current Uplink Port:	Port 1
Change Uplink Port:	Port 1 <input type="button" value="v"/>

Note:
The MTU VLAN configuration will be changed while you modify the uplink port.

Figure 5-3 MTU VLAN Configuration

-  **Note:**
1. The uplink port will form several VLANs with each of the other ports. Each VLAN contains two ports, the uplink port and one of the other ports in the switch, thus the uplink port can communicate with any other port but other ports cannot communicate with each other.
 2. For the first time the MTU VLAN mode is enabled, the switch will set port 1 as the uplink port by default.

5.2 Port Based VLAN

On this page you can configure Port Based VLAN feature and view the related settings.

Choose the menu **VLAN**→**Port Based VLAN** to load the following page.

Port Based VLAN Configuration

Port Based VLAN Configuration: Enable Disable

VLAN ID	(2-32)							
Port	1	2	3	4	5	6	7	8
Member	<input type="checkbox"/>	<input type="checkbox"/>	<input type="checkbox"/>	<input type="checkbox"/>	<input type="checkbox"/>	<input type="checkbox"/>	<input type="checkbox"/>	<input type="checkbox"/>
Port	9	10	11	12	13	14	15	16
Member	<input type="checkbox"/>	<input type="checkbox"/>	<input type="checkbox"/>	<input type="checkbox"/>	<input type="checkbox"/>	<input type="checkbox"/>	<input type="checkbox"/>	<input type="checkbox"/>

VLAN ID	VLAN Member Port	Delete
1	1-16	<input type="checkbox"/>

Note:
When Port Based VLAN is enabled, 802.1Q VLAN will be disabled automatically and its settings will be lost.

Figure 5-4 Port Based VLAN Configuration

To ensure the normal communication of the factory switch, the default VLAN of all ports is set to VLAN1. VLAN 1 cannot be deleted.

The following entries are displayed on this screen:

➤ **Port Based VLAN Configuration**

Port Based VLAN Configuration:	Enable or disable Port Based VLAN mode.
VLAN ID:	Enter the ID number of VLAN. It ranges from 2 to 32.
Port:	Displays the port number.
Member:	Click the check box to select the port of the VLAN. It is multi-optional. If this field is checked, it indicates the port belongs to the current VLAN.



Note:

A VLAN cannot be the subset or superset of the other VLANs.

5.3 802.1Q VLAN

On this page you can configure 802.1Q VLAN feature and view the related settings.

Choose the menu **VLAN**→**802.1Q VLAN** to load the following page.

802.1Q VLAN Configuration

802.1Q VLAN Configuration: Enable Disable

VLAN ID	<input type="text" value=""/> (2-4094)	VLAN Name	<input type="text" value=""/>
Port	Untagged	Tagged	Not Member
Select All	<input type="checkbox"/>	<input type="checkbox"/>	<input type="checkbox"/>
Port 1	<input type="radio"/>	<input type="radio"/>	<input checked="" type="radio"/>
Port 2	<input type="radio"/>	<input type="radio"/>	<input checked="" type="radio"/>
Port 3	<input type="radio"/>	<input type="radio"/>	<input checked="" type="radio"/>
Port 4	<input type="radio"/>	<input type="radio"/>	<input checked="" type="radio"/>
Port 5	<input type="radio"/>	<input type="radio"/>	<input checked="" type="radio"/>
Port 6	<input type="radio"/>	<input type="radio"/>	<input checked="" type="radio"/>
Port 7	<input type="radio"/>	<input type="radio"/>	<input checked="" type="radio"/>
Port 8	<input type="radio"/>	<input type="radio"/>	<input checked="" type="radio"/>
Port 9	<input type="radio"/>	<input type="radio"/>	<input checked="" type="radio"/>
Port 10	<input type="radio"/>	<input type="radio"/>	<input checked="" type="radio"/>
Port 11	<input type="radio"/>	<input type="radio"/>	<input checked="" type="radio"/>
Port 12	<input type="radio"/>	<input type="radio"/>	<input checked="" type="radio"/>
Port 13	<input type="radio"/>	<input type="radio"/>	<input checked="" type="radio"/>
Port 14	<input type="radio"/>	<input type="radio"/>	<input checked="" type="radio"/>
Port 15	<input type="radio"/>	<input type="radio"/>	<input checked="" type="radio"/>
Port 16	<input type="radio"/>	<input type="radio"/>	<input checked="" type="radio"/>

VLAN ID	VLAN Name	Member Ports	Tagged Ports	Untagged Ports	Delete
<input type="button" value="Select All"/> <input type="button" value="Delete"/>					

Note:
When 802.1Q VLAN is enabled, Port Based VLAN will be disabled automatically and its settings will be lost.

Figure 5-5 802.1Q VLAN Configuration

To ensure the normal communication of the factory switch, the default VLAN of all ports is set to be VLAN1. VLAN 1 cannot be modified or deleted.

The following entries are displayed on this screen:

➤ **802.1Q VLAN Configuration**

- 802.1Q VLAN Configuration:** Enable or disable 802.1Q VLAN mode.
- VLAN ID:** Enter the ID number of VLAN. It ranges from 2 to 4094.
- VLAN Name:** Give a name to the VLAN for identification.
- Port:** Displays the port number.
- Untagged:** Click the check box to configure the egress rule of the traffic on this port as untagged. The switch drops the tag header before sending the packet.

Tagged:

Click the check box to configure the egress rule of the traffic on this port as tagged. The switch adds the tag header before sending the packet.

Not Member:

Click the check box to exclude the port from the current VLAN.

5.4 802.1Q PVID Setting

PVID (Port Vlan ID) is the default VID of the port. When the switch receives an un-VLAN-tagged packet, it will add a VLAN tag to the packet according to the PVID of its received port and forward the packets.

When creating VLANs, the PVID of each port, indicating the default VLAN to which the port belongs, is an important parameter with the following two purposes:

- (1) When the switch receives an un-VLAN-tagged packet, it will add a VLAN tag to the packet according to the PVID of its received port
- (2) PVID determines the default broadcast domain of the port, i.e. when the port receives UL packets or broadcast packets, the port will broadcast the packets in its default VLAN.

On this page you can configure PVID of the specified port. By default, the PVID of all ports is 1.

Choose the menu **VLAN→802.1Q VLAN Port Setting** to load the following page.

802.1Q VLAN Port Setting

Select	Port	PVID
<input type="checkbox"/>		<input type="text"/>
<input type="checkbox"/>	Port 1	1
<input type="checkbox"/>	Port 2	1
<input type="checkbox"/>	Port 3	1
<input type="checkbox"/>	Port 4	1
<input type="checkbox"/>	Port 5	1
<input type="checkbox"/>	Port 6	1
<input type="checkbox"/>	Port 7	1
<input type="checkbox"/>	Port 8	1
<input type="checkbox"/>	Port 9	1
<input type="checkbox"/>	Port 10	1
<input type="checkbox"/>	Port 11	1
<input type="checkbox"/>	Port 12	1
<input type="checkbox"/>	Port 13	1
<input type="checkbox"/>	Port 14	1
<input type="checkbox"/>	Port 15	1
<input type="checkbox"/>	Port 16	1

Note:

1. By default, the PVID of all ports is 1.
2. 802.1Q VLAN PVID will be restored to 1 when 802.1Q VLAN is disabled.

Figure 5-6 802.1Q VLAN Port Setting

The following entries are displayed on this screen:

➤ **802.1Q VLAN Port Setting**

Select: Select the desired port for configuration. It is multi-optional.

Port: Displays the port number.

PVID: Enter a PVID number for the port. When adding the tag header to the received untagged packet, the switch will automatically uses this PVID value as the VLAN ID of the added tag.



Note:

802.1Q VLAN should be enabled before setting PVID.

[Return to CONTENTS](#)

Chapter 6 QoS

QoS (Quality of Service) functions to provide different quality of service for various network applications and requirements and optimize the bandwidth resource distribution so as to provide a network service experience of a better quality.

➤ QoS

This switch classifies the ingress packets, maps the packets to four different priority queues and then forwards the packets according to Strict-Priority scheduling algorithms to implement QoS function.

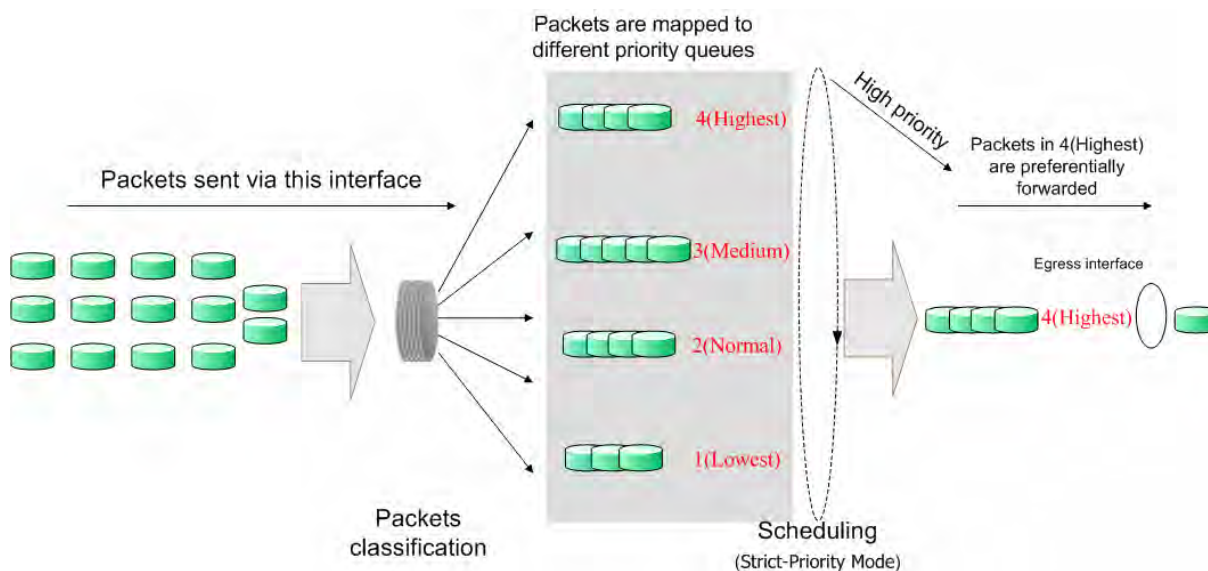


Figure 6-1 QoS function

- Traffic classification: Identifies packets conforming to certain characters according to certain rules.
- Map: This switch supports four priority queues. The priority queues are labeled as 1(Lowest), 2(Normal), 3(Medium) and 4(Highest), among them the bigger the value, the higher the priority. The ingress packets are mapped to four different priority queues based on the QoS modes. This switch implements two QoS modes based on port and on 802.1P.
- Queue scheduling algorithm: When the network is congested, the problem that many packets compete for resources must be solved, usually in the way of queue scheduling. In both port-based and 802.1P QoS modes, this switch adopts Strict-Priority scheduling algorithm. In Strict-Priority scheduling algorithm, the queue with higher priority will occupy the whole bandwidth. Packets in the queue with lower priority are sent only when the queue with higher priority is empty.

➤ QoS Mode

This switch implements two QoS modes based on port and on 802.1P. By default, the QoS mode based on port is enabled and the other one is optional.

1. Port Based

When port-base QoS mode is enabled, the user can manually map the ingress packets of the port to four different priority queues. After that, the switch will preferentially send packets in the queue with higher priority, and only when the queue with higher priority is empty, packets in the queue with lower priority are sent.

2. 802.1P Based

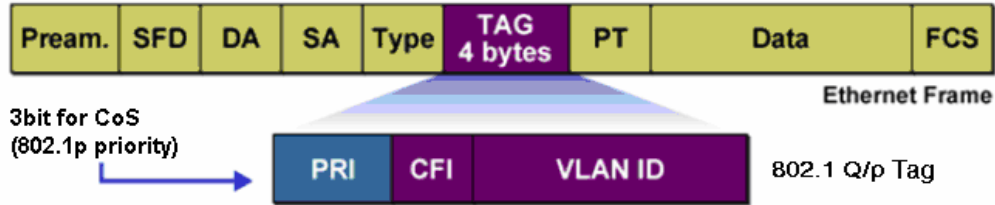


Figure 6-2 802.1Q frame

As shown in the figure above, each 802.1Q Tag has a Pri field, comprising 3 bits. The 3-bit priority field is 802.1p priority in the range of 0 to 7. The 802.1p priority value determines how the switch maps the ingress packets to the priority queues. The mapping relationship between eight 802.1p priority value and priority queues is shown as follows:

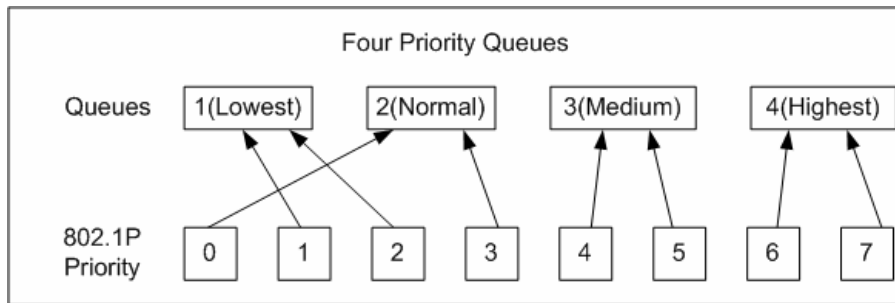


Figure 6-3 Map 802.1P priority

- Priority 1 and 2 are assigned to the 1 (Lowest) priority queue.
- Priority 0 and 3 are assigned to the 2 (Normal) priority queue.
- Priority 4 and 5 are assigned to the 3 (Medium) priority queue.
- Priority 6 and 7 are assigned to the 4 (Highest) priority queue.

When 802.1P QoS mode is enabled, the switch will automatically map the ingress packets to priority queues based on the 802.1p priority and the above mapping relationship. After that, the switch will preferentially send packets in the queue with higher priority, and only when the queue with higher priority is empty, packets in the queue with lower priority are sent. As for the untagged packets, the switch will forward it according to the default port-based QoS mode.

The QoS module is mainly for priority configuration and traffic control, including three submenus: **QoS Basic**, **Bandwidth Control** and **Storm Control**.

6.1 QoS Basic

This switch classifies the ingress packets, maps the packets to different priority queues and then forwards the packets to implement QoS function.

This switch implements two priority modes based on port and on 802.1P. The port-based QoS mode supports four priority queues. The port priority queues are labeled as 1, 2, 3, and 4.

On this page you can configure and view QoS mode and the port-based priority setting.

Choose the menu **QoS**→**QoS Basic** to load the following page.

Global Config

QoS Mode: Port Based 802.1P Based

Port-based Priority Setting

Port	Priority Queue
Port 1	1(Lowest)
Port 2	
Port 3	
Port 4	
Port 5	

Port	Priority Queue
Port 1	1(Lowest)
Port 2	1(Lowest)
Port 3	1(Lowest)
Port 4	1(Lowest)
Port 5	1(Lowest)
Port 6	1(Lowest)
Port 7	1(Lowest)
Port 8	1(Lowest)
Port 9	1(Lowest)
Port 10	1(Lowest)
Port 11	1(Lowest)
Port 12	1(Lowest)
Port 13	1(Lowest)
Port 14	1(Lowest)
Port 15	1(Lowest)
Port 16	1(Lowest)

Note:

1. Lowest Priority (background data)
2. Normal Priority (business-critical data, email, internet, etc)
3. Medium Priority (stream multimedia, etc)
4. Highest Priority (interactive voice, video, and delay sensitive data)

Figure 6-4 QoS Basic

The following entries are displayed on this screen:

➤ **Global Config**

QoS Mode:

Select the desired QoS mode.

- **Port Based:** The switch classifies the ingress packets and maps the packets to different priority queues based on which port the packets come from.
- **802.1p Based:** The switch classifies the ingress packets and maps the packets to different priority queues based on the 802.1p priority field in the 802.1Q tag.

➤ **Port-based Priority Setting**

Port: Select the desired port to configure its priority queue. It is multi-optional.

Priority Queue: Specify the priority queue the packets from the port are mapped to. The priorities are labeled as 1~4 and among them the bigger the value, the higher the priority.

6.2 Bandwidth Control

Bandwidth control functions to control the ingress/egress traffic rate on each port via configuring the available bandwidth of each port. In this way, the network bandwidth can be reasonably distributed and utilized.

On this page you can configure and view the bandwidth control function information.

Choose the menu **QoS**→**Bandwidth Control** to load the following page.

Bandwidth Control Setting

Port	Status	Rate(Kbit/sec)	Type
Port 1 Port 2 Port 3 Port 4 Port 5	Disable	<input type="text"/> (0-1000000)	Ingress Egress

Apply Help

Port	Ingress Rate (Kbit/sec)	Egress Rate (Kbit/sec)
Port 1	Unlimited	Unlimited
Port 2	Unlimited	Unlimited
Port 3	Unlimited	Unlimited
Port 4	Unlimited	Unlimited
Port 5	Unlimited	Unlimited
Port 6	Unlimited	Unlimited
Port 7	Unlimited	Unlimited
Port 8	Unlimited	Unlimited
Port 9	Unlimited	Unlimited
Port 10	Unlimited	Unlimited
Port 11	Unlimited	Unlimited
Port 12	Unlimited	Unlimited
Port 13	Unlimited	Unlimited
Port 14	Unlimited	Unlimited
Port 15	Unlimited	Unlimited
Port 16	Unlimited	Unlimited

Note:

A port cannot enable both Storm Control and Ingress Rate Control at the same time.

Figure 6-5 Bandwidth Control Setting

The following entries are displayed on this screen:

➤ **Bandwidth Control Setting**

Port: Select the desired port for bandwidth control configuration. It is multi-optional.

Status: Allows you to enable or disable the bandwidth control function..

Rate(Kbit/sec): Select the rate for receiving/sending packets on the port. The packet traffic exceeding the rate will be discarded. It ranges from 0 to 100000, and must be integral multiple of 64.

Type: Select to control the ingress/egress traffic rate on each port. It is multi-optional.

- **Ingress:** If the rate for receiving packets on the port exceeds the set rate, the packets will be discarded.
- **Egress:** If the rate for sending packets on the port exceeds the set rate, the packets will be discarded.



Note:

1. If you enable ingress bandwidth control feature for the storm control-enabled port, storm control feature will be disabled for this port.
2. When egress bandwidth control feature is enabled for one or more ports, you are suggested to disable the flow control on each port to ensure the switch works normally.

6.3 Storm Control

Storm control function allows the switch to filter broadcast, multicast and UL frame in the network. If the transmission rate of the chosen packets exceeds the set bandwidth, the packets will be automatically discarded to avoid network broadcast storm.

On this page you can configure and view the storm control function information.

Choose the menu **QoS**→**Storm Control** to load the following page.

Storm Control Setting

Port	Status	Total Rate(Kbit/sec)	Included Storm Type
<ul style="list-style-type: none"> Port 1 ▲ Port 2 ▢ Port 3 ▼ Port 4 ▼ Port 5 ▼ 	Disable ▼	<input type="text"/> (0-100000)	<ul style="list-style-type: none"> UL-Frame ▲ Multicast Broadcast ▼

Port	Total Rate(Kbit/sec)	Included Storm Type
Port 1	Unlimited	NULL
Port 2	Unlimited	NULL
Port 3	Unlimited	NULL
Port 4	Unlimited	NULL
Port 5	Unlimited	NULL
Port 6	Unlimited	NULL
Port 7	Unlimited	NULL
Port 8	Unlimited	NULL
Port 9	Unlimited	NULL
Port 10	Unlimited	NULL
Port 11	Unlimited	NULL
Port 12	Unlimited	NULL
Port 13	Unlimited	NULL
Port 14	Unlimited	NULL
Port 15	Unlimited	NULL
Port 16	Unlimited	NULL

Note:
For one port, you cannot enable the Storm Control and the Ingress Rate Control at the same time.

Figure 6-6 Storm Control Setting

The following entries are displayed on this screen:

➤ **Storm Control Setting**

Port: Select the desired port for storm control configuration. It is multi-optional.

Status: Allows you to enable or disable the storm control function.

Total Rate: Select the rate for receiving packets on the port. The packet traffic exceeding the rate will be discarded. It ranges from 0 to 100000, and must be integral multiple of 64.

**Included
Type:**

Storm

Select to filter broadcast/multicast/UL frame in the network, if the transmission rate of the chosen packets exceeds the set rate, the packets will be automatically discarded to avoid network broadcast storm. It is multi-optional.

- **UL-Frame:** If UL-Frame packets traffic exceeds the rate on the port, they will be discarded.
- **Multicast:** If multicast packets traffic exceeds the rate on the port, they will be discarded.
- **Broadcast:** If broadcast packets traffic exceeds the rate on the port, they will be discarded.



Note:

If you enable storm control feature for the ingress rate control-enabled port, the ingress rate control feature will be disabled for this port.

[Return to CONTENTS](#)

Appendix A: Specifications

Standards	IEEE802.3 10Base-T Ethernet
	IEEE802.3u 100Base-TX
	IEEE802.3ab 1000Base-T Gigabit Ethernet
	IEEE802.3x Flow Control
	IEEE802.1p QoS
	IEEE802.1q VLAN
Transmission Rate	Ethernet: 10Mbps HD, 20Mbps FD
	Fast Ethernet: 100Mbps HD, 200Mbps FD
	Gigabit Ethernet: 2000Mbps FD
Transmission Medium	10Base-T: UTP/STP of Cat. 3 or above
	100Base-TX: UTP/STP of Cat. 5 or above
	1000Base-T: 4-pair UTP ($\leq 100\text{m}$) of Cat. 5, Cat. 5e, Cat.6 or above
LED	Power, 1000Mbps, Link/Act
Transmission Method	Store and Forward
Packets Forwarding Rate	10BASE-T: 14881pps/port
	100BASE-TX: 148810pps/port
	1000Base-T: 1488095pps/port
Operating Environment	Operating Temperature: 0°C ~ 40°C
	Storage Temperature: -40°C ~ 70°C
	Operating Humidity: 10% ~ 90% RH Non-condensing
	Storage Humidity: 5% ~ 90% RH Non-condensing

[Return to CONTENTS](#)

Appendix B: Configuring the PCs

In this section, we'll introduce how to install and configure the TCP/IP correctly in Windows 2000. First make sure your Ethernet Adapter is working, refer to the adapter's manual if necessary.

- 1) On the Windows taskbar, click the **Start** button, and then click **Control Panel**.
- 2) Click the **Network and Internet Connections** icon, and then click on the **Network Connections** tab in the appearing window.
- 3) Right click the icon that showed below, select Properties on the prompt page.

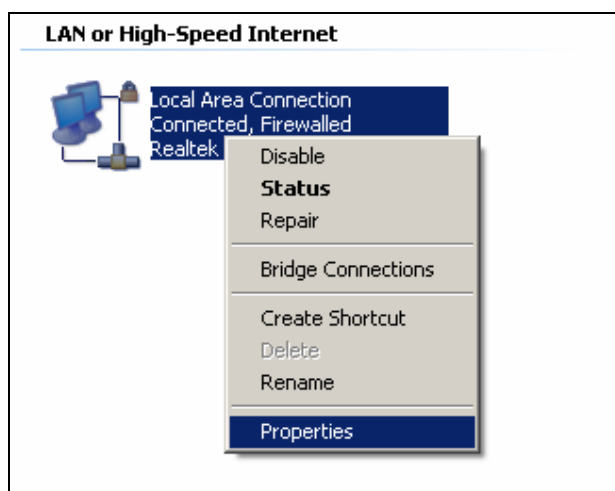


Figure B-1

- 4) In the prompt page that showed below, double click on the **Internet Protocol (TCP/IP)**.

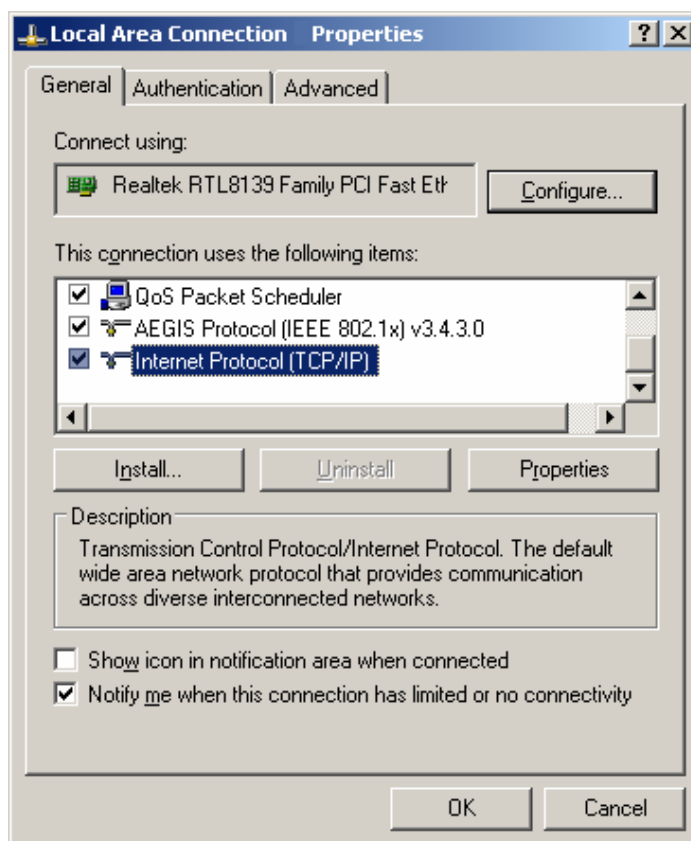


Figure B-2

- 5) The following **TCP/IP Properties** window will display and the **IP Address** tab is open on this window by default.

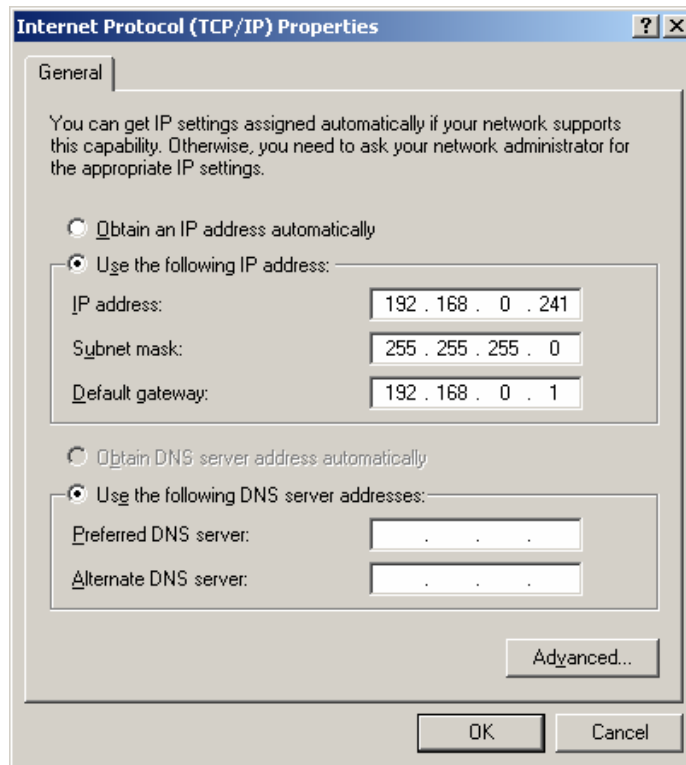


Figure B-3

- 6) Select **Use the following IP address**. And the following items will be available. If the switch's IP address is 192.168.0.1, specify IP address as 192.168.0.x (x is from 2 to 254), and the **Subnet mask** as 255.255.255.0.

Now:

Click **OK** to save your settings.

[Return to CONTENTS](#)