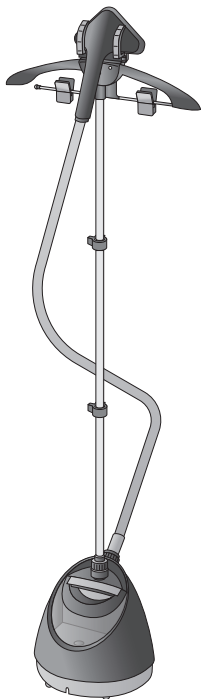


Tefal®

EN

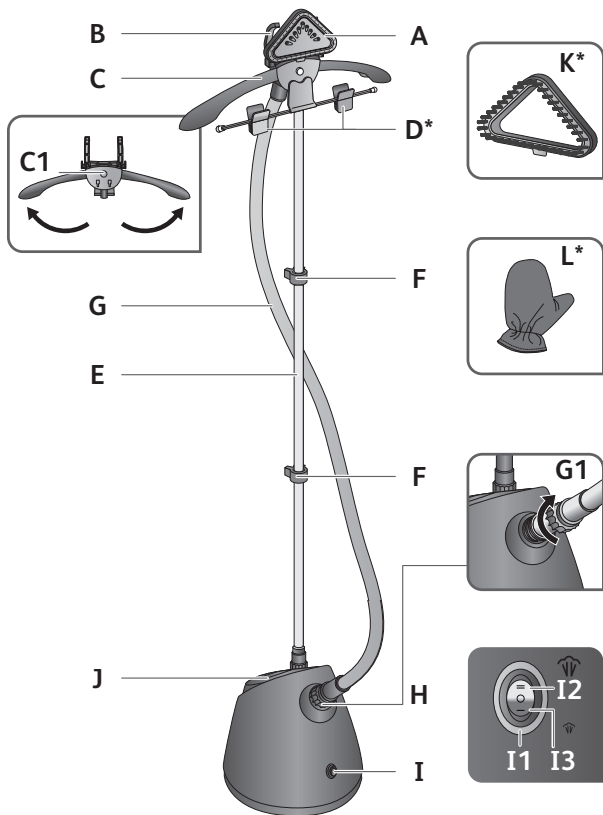


PRO STYLE ONE - IT24****

www.tefal.com

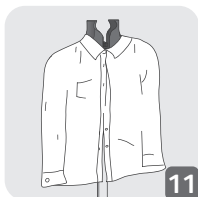
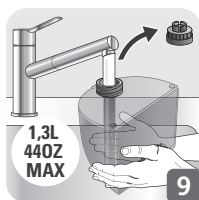
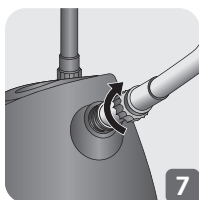
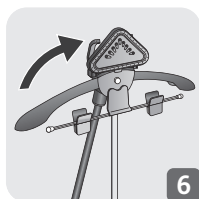
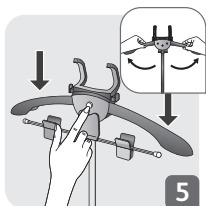
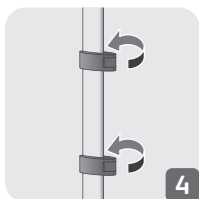
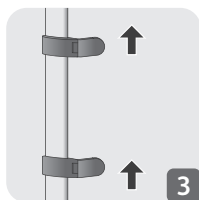
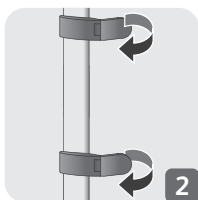
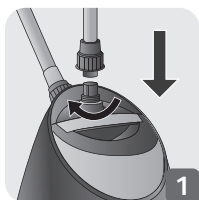
TM!by
ONLINE STORE

<https://tm.by>
Интернет-магазин

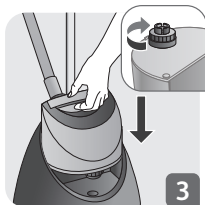
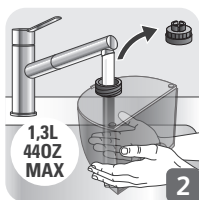


* depending on model

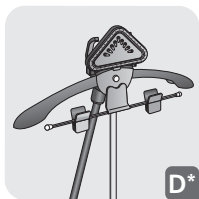
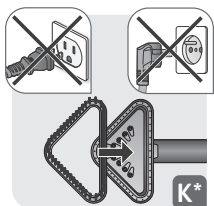
1 ASSEMBLY



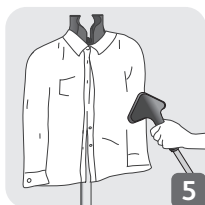
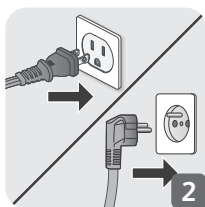
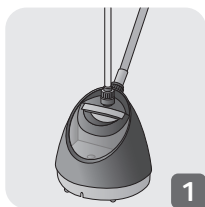
2 BEFORE USE



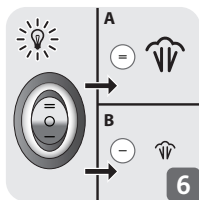
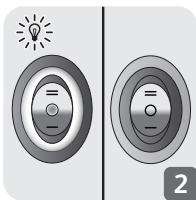
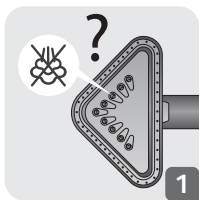
3 ACCESSORIES (*IN SOME MODELS ONLY)



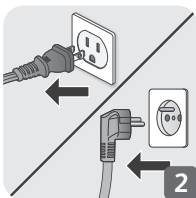
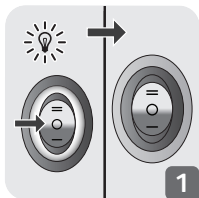
4 SCENARIO OF USE



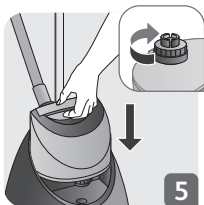
5 DURING USE



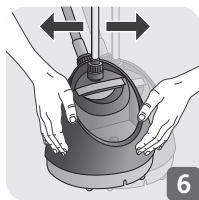
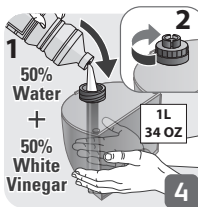
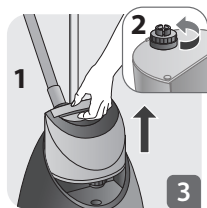
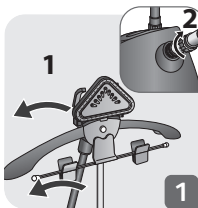
6 AFTER USE



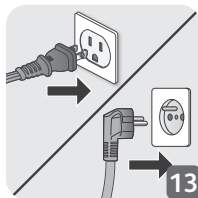
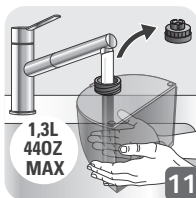
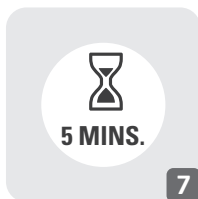
6 AFTER USE



7 DESCALING PROCEDURE



7 DESCALING PROCEDURE



DESCRIPTION

A Steam Head	I ON/OFF switch + 2 steam setting button
B Steam head holder	I1 ON/OFF Light indicator
C Hanger	I2 High steam level position
C1 Lock button for hanger foldability	I3 Low steam level position
D Trouser clips *	J Removable Water tank
E Adjustable pole	K Steam head brush *
F Pole locking clips	L Glove *
G Woven fabric steam hose	
G1 Hose Lock	
H Hose Connector	

EN

* Depending on model

1. ASSEMBLY

1. Insert the pole in the housing & then lock.
2. Open the 2 pole locks.
3. Extend the pole fully.
4. Close the 2 locks.
5. Fully insert the hanger vertically on top of the pole.
6. Position the steam head on the holder of the hanger.
7. Lock the extremity of the steam hose (G1) to the connector(H) located on the product base.

2. BEFORE USE

1. Remove the water tank.
2. Remove the cap then fill the water tank.
3. Fully screw the water tank cap and insert tank back into the appliance.
4. Place the garment on the hanger.

9

3. ACCESSORIES (* IN SOME MODELS ONLY)



Make sure the appliance is unplugged and completely cool before attaching or removing accessories.

K. The fabric brush opens the weaves of the fabrics for better steam penetration.

Attach the fabric brush to the steam head when appliance is unplugged and has cooled down.

D. The trouser clip should be clipped on the hanger. It helps to hold trousers, skirts and other clothes during steaming.

4. SCENARIO OF USE

1. Only operate the appliance on a floor clear of any materials which may obstruct the base of the steamer (flat and horizontal surface). Do not obstruct the openings on the lower part of the appliance. This appliance should not be used on very thick carpets or rugs.
2. Plug in the appliance.
3. Press on the ON/OFF switch to turn the appliance ON or OFF.
Press on the highest position = for higher steam concentration. A red light will turn on.
Press on the lowest position — for a lower steam concentration. A blue light will turn on.
Wait for 45 seconds before steaming.
If you want to turn OFF the appliance, press on the middle position ○.
The light indicator will turn off.
4. After 45 seconds approximately, steam will come out.
5. For optimal use, pass the steam jets on your garment from top to bottom.



Warning: Never steam a garment while it is being worn.

5. DURING USE

1. If steam is not coming out anymore, this can be due to low water level in tank.
2. Press the ON/OFF switch to the middle position and check that light is switched OFF.
3. Remove the water tank.
4. Remove the cap then fill the water tank.
5. Fully screw the water tank cap and insert tank back in appliance.
6. Press the ON/OFF switch and select your desired steam concentration. Check that light is switching on. Wait for 45 seconds before steaming.

6. AFTER USE

1. Press the ON/OFF switch to the middle position and check that light is switched OFF.
2. Unplug the appliance.
3. Remove the water tank.
4. Unscrew the cap and then empty the water tank completely in a sink.
5. Screw back the cap and place the water tank back onto the appliance.
6. Wait for an hour for your appliance to cool before storing.

7. DESCALING PROCEDURE



This process should be made every 6 months or as soon as you feel that the performance of the appliance (steam output) is decreasing.



WARNING! Wait an hour so that the appliance has completely cooled down.

1. Remove the steam head from the hanger, unlock the locker and pull out the pole.
2. Never fill inside the pole connection (G1 / H).
3. Remove the water tank and open its cap.
4. Fill the water tank with a mixed preparation of 500ml of vinegar and 500ml of water. Close the cap.
5. Descale the appliance by placing the water tank with the preparation of vinegar / water (cold appliance), back into the base.
6. Gently shake the appliance.
7. Leave to soak for at least 5 minutes.
8. Remove the water tank from the base.
9. Vertically tilt the appliance to empty the water into the sink.
10. Repeat the procedure until there is no more water in the water tank (5-6 times).
11. Once completed, re-assemble the product (Step 1 to 7).
12. Remove the cap then fill the water tank with 1.3L of water.
13. Re-assemble the water tank cap by screwing it in completely to ensure that it is watertight but do not over tighten it and insert the water tank back into the appliance.
14. Plug in the appliance.
15. Let the appliance run until the water tank has completely emptied.

8. CLEANING

- Wait an hour so that the appliance has completely cooled down.
- Only use a damp sponge/cloth with water to clean the base.
- Only use a damp sponge/cloth with water to clean the steam head.
- Never use detergents when cleaning your appliance.
- Never wash or rinse appliance directly over a sink.

1820003328



<https://tm.by>
Интернет-магазин