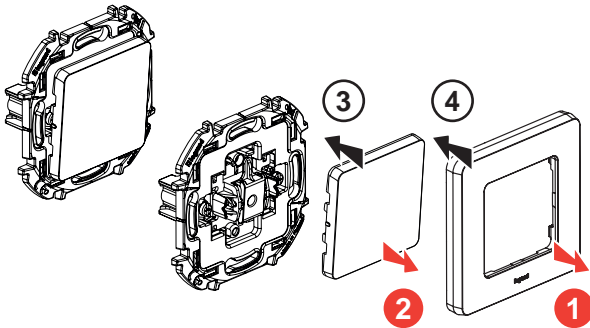
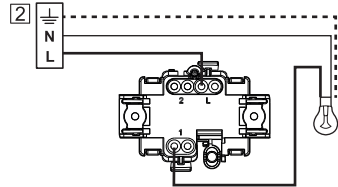


6 736 00/01/02/03

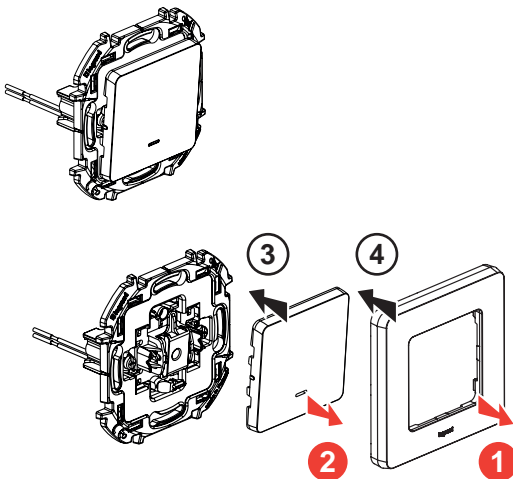


1 **10 AX, 250 B~**

	≤ 2,5 mm ²
	13 mm

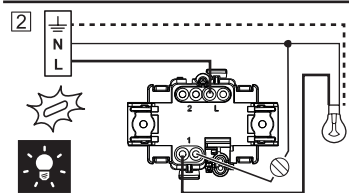
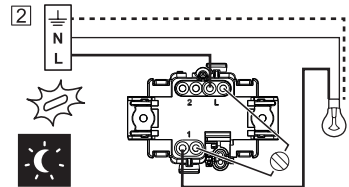


6 736 10/11/12/13

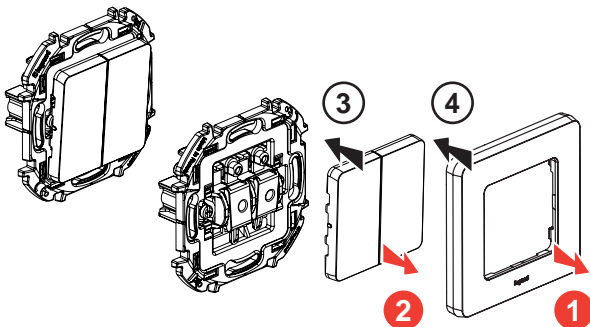


1 **10 AX, 250 B~**

	≤ 2,5 mm ²
	13 mm

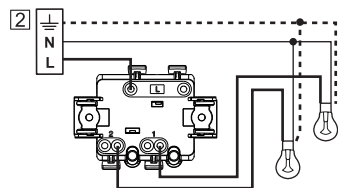


6 736 20/21/22/23

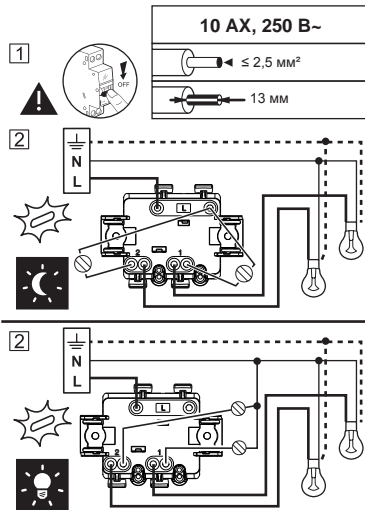
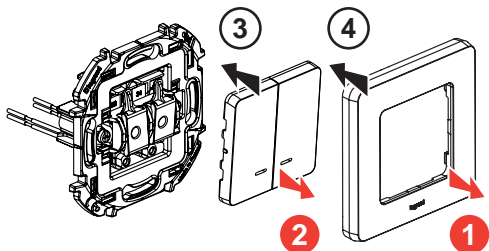
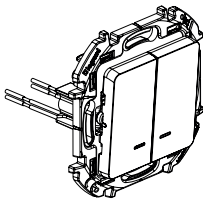


1 **10 AX, 250 B~**

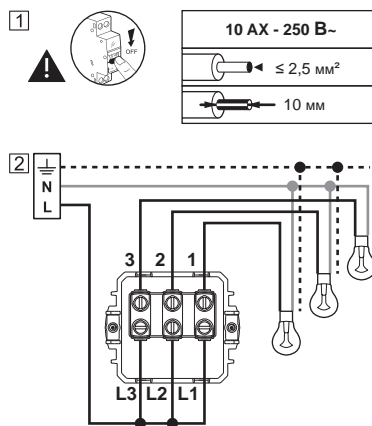
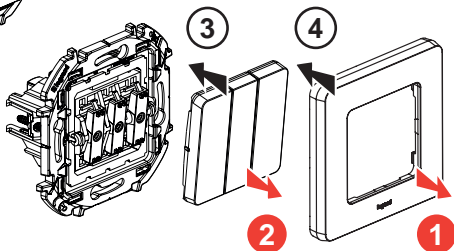
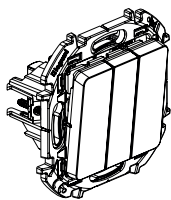
	≤ 2,5 mm ²
	13 mm



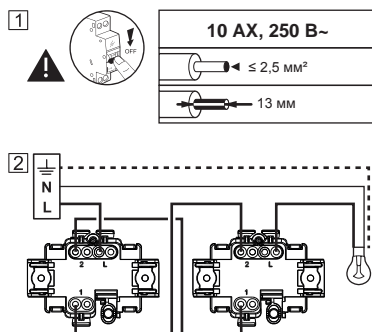
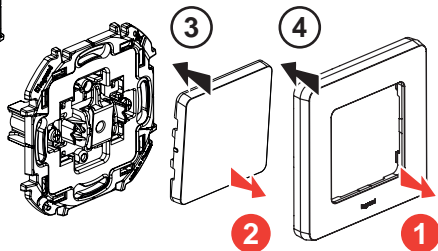
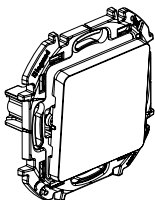
6 736 30/31/32/33



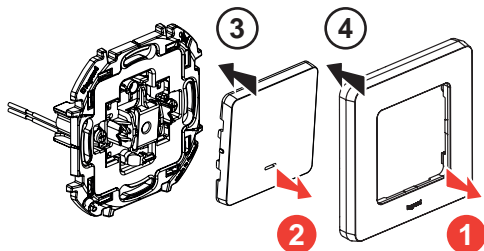
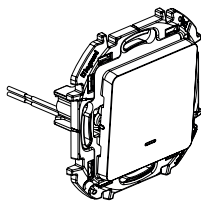
6 736 40/41/42/43



6 736 50/51/52/53

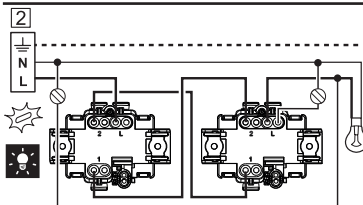
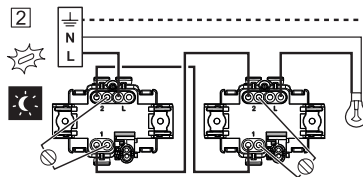


6 736 60/61/62/63

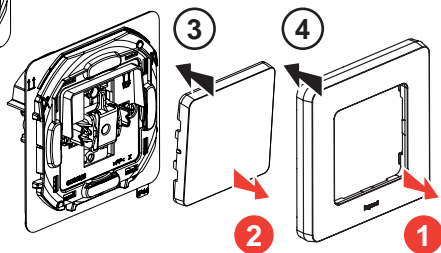
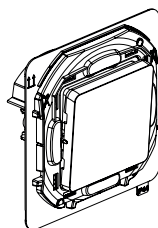


1

10 AX, 250 B~
≤ 2,5 mm ²
13 mm

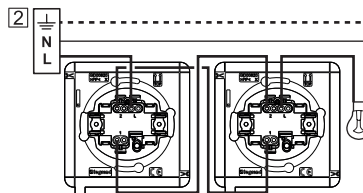


6 736 70/71/72/73

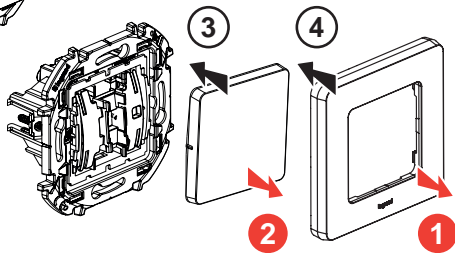
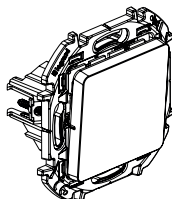


1

10 AX, 250 B~, IP44
≤ 2,5 mm ²
13 mm

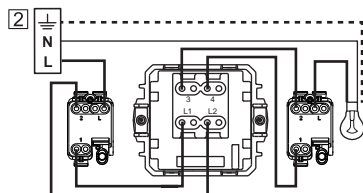


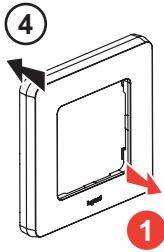
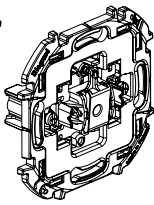
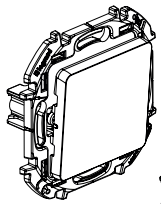
6 736 80/81/82/83



1

10 AX, 250 B~
≤ 2,5 mm ²
10 mm





1



6 A, 250 B~

≤ 2,5 mm²

13 mm

2

