

QUICK START GUIDE

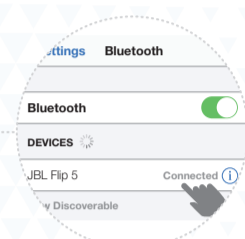
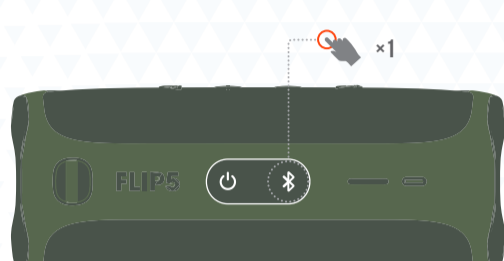
FLIP 5



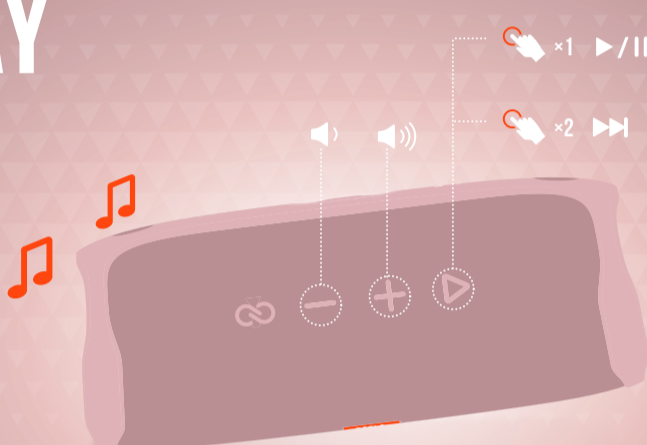
WHAT'S IN THE BOX



BLUETOOTH PAIRING



PLAY



PARTYBOOST

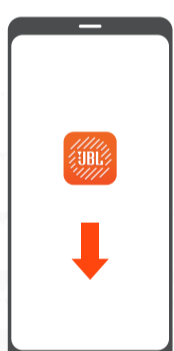
1.



2.



APP

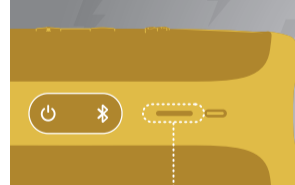


JBL CONNECT

USE THE JBL CONNECT APP FOR SPEAKER CONFIGURATION AND SOFTWARE UPGRADE.



CHARGING



USB



WATERPROOF IPX7



30 MINS

1M

TECH SPEC

BLUETOOTH® VERSION:	4.2
SUPPORT:	A2DP V1.3, AVRCP V1.6
TRANSDUCER:	44 X 80MM
RATED POWER:	20W RMS
FREQUENCY RESPONSE:	65HZ – 20KHZ
SIGNAL-TO-NOISE RATIO:	> 80DB
BATTERY TYPE:	LITHIUM-ION POLYMER 17.28WH (EQUIVALENT TO 3.6V, 4800MAH)
BATTERY CHARGE TIME:	2.5 HOURS (5V/3A)
MUSIC PLAYTIME:	UP TO 12 HOURS (VARIES BY VOLUME LEVEL AND AUDIO CONTENT)
BLUETOOTH® TRANSMITTER POWER:	0 – 11DBM
BLUETOOTH® TRANSMITTER FREQUENCY RANGE:	2.402 – 2.480GHZ
BLUETOOTH® TRANSMITTER MODULATION:	GFSK, π/4 DQPSK, 8DPSK
DIMENSION (W × D × H):	181 X 69 X 74MM
WEIGHT:	540G

