

QUICK START GUIDE

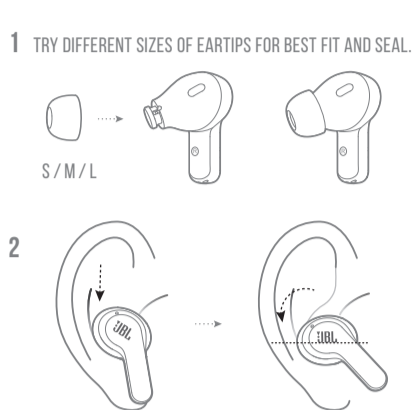
WAVE200 TWS



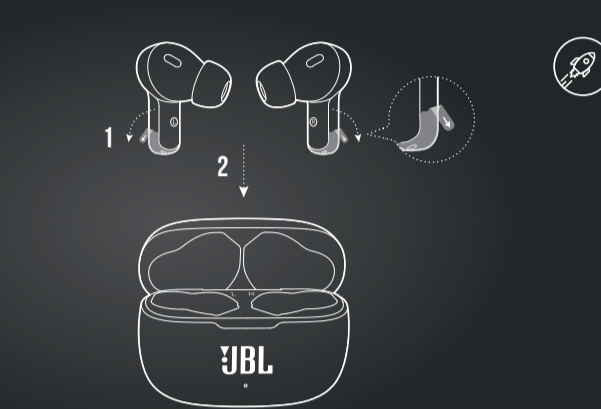
WHAT'S IN THE BOX



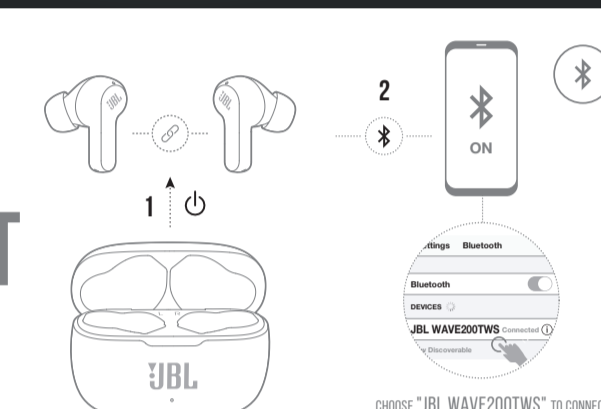
HOW TO WEAR



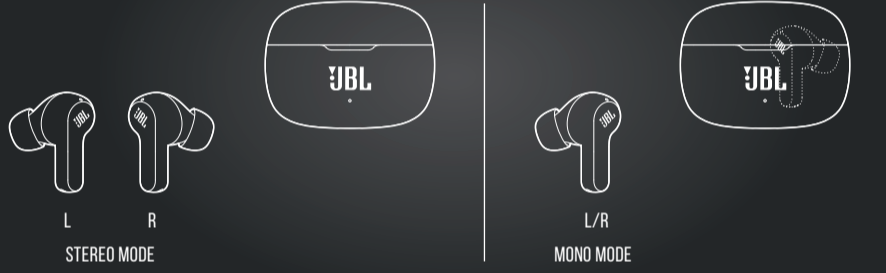
FIRST TIME USE



POWER ON & CONNECT

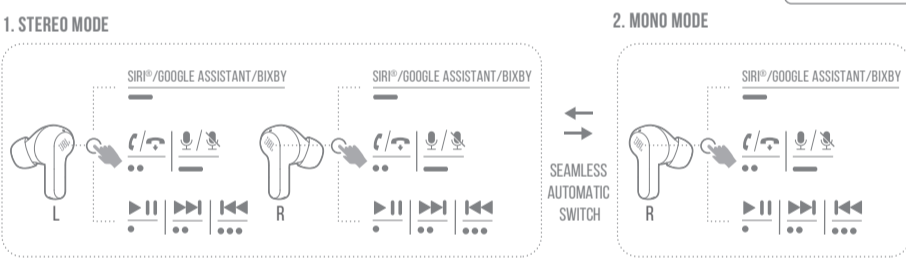


DUAL CONNECT

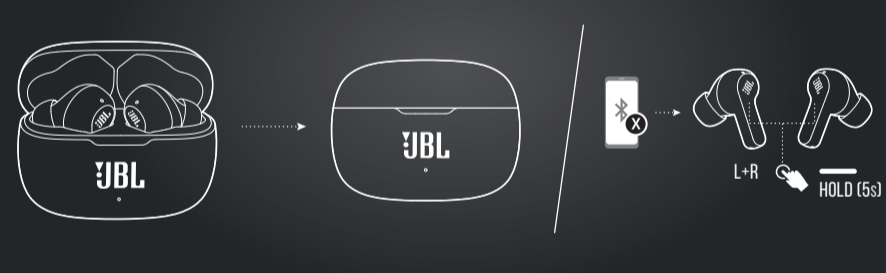


BUTTON COMMAND

- TAP × 1
- TAP × 2
- TAP × 3
- HOLD (2s)

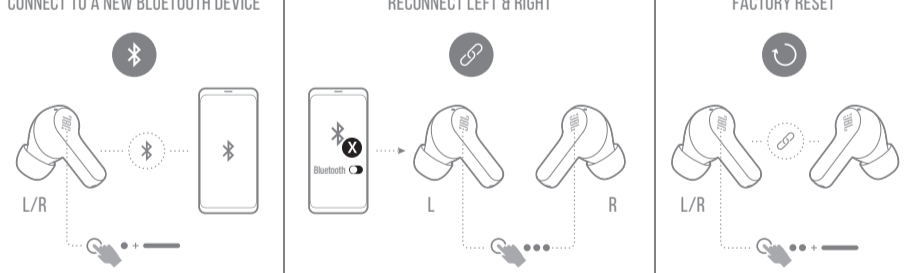


POWER OFF

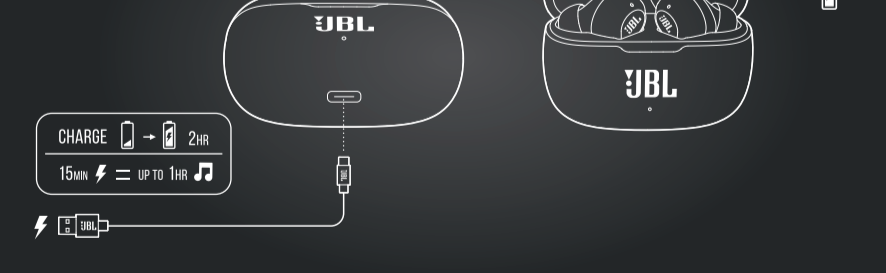


MANUAL CONTROLS

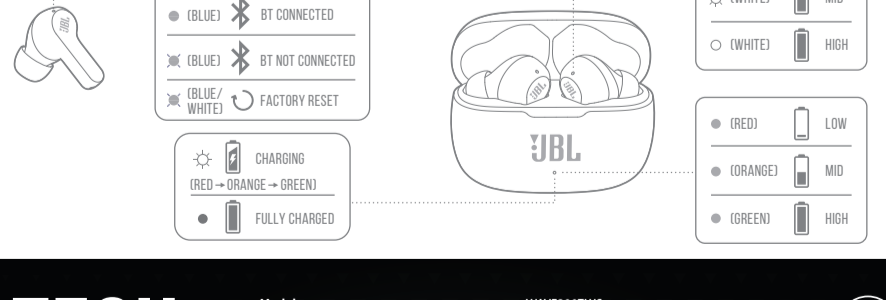
- TAP × 1
- TAP × 2
- TAP × 3
- HOLD (5s)



CHARGING



LED BEHAVIORS



TECH SPEC

Model: WAVE200TWS
 Driver size: 8 mm/ 0.315" Dynamic Driver
 Power supply: 5V --- 1 A
 Weight: 47.5 g/ 0.105 lbs
 Headset battery type: Lithium-ion Battery (48 mAh/ 3.7 V)
 Charging case battery type: Lithium-ion Battery(500 mAh/ 3.7 V)
 Charging time: 2 hrs from empty up to 5 hrs
 Frequency response: 20 Hz – 20 kHz
 Impedance: 16 ohm
 Sensitivity: 108 dB SPL@1 kHz
 Maximum SPL: 93 dB
 Microphone sensitivity: -38 dBV/Pa @1 kHz
 Bluetooth version: 5.0
 Bluetooth profile version: A2DP V1.3, AVRCP V1.6, HFP V1.7
 Bluetooth transmitter frequency range: 2.400 GHz - 2.4835 GHz
 Bluetooth transmitter power: 12 dBm
 Bluetooth transmitter modulation: GFSK, π/4 QPSK, 8DPSK
 Maximum operation temperature: 45°C

