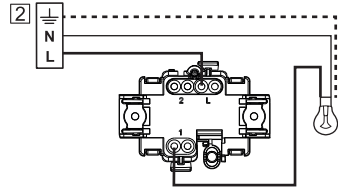
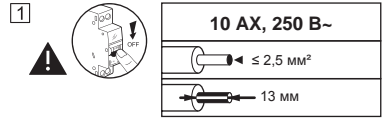
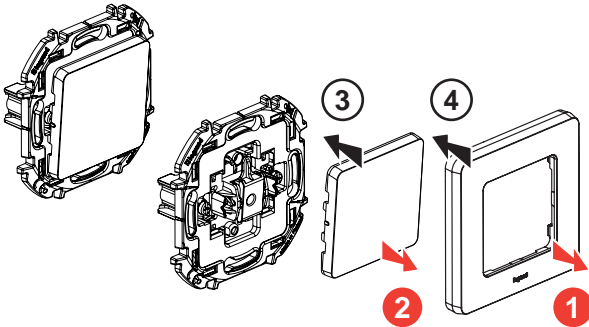
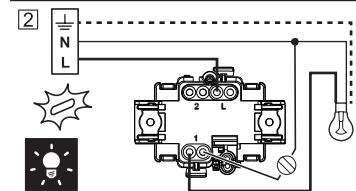
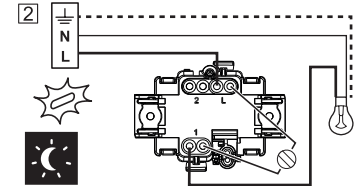
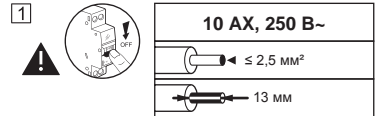
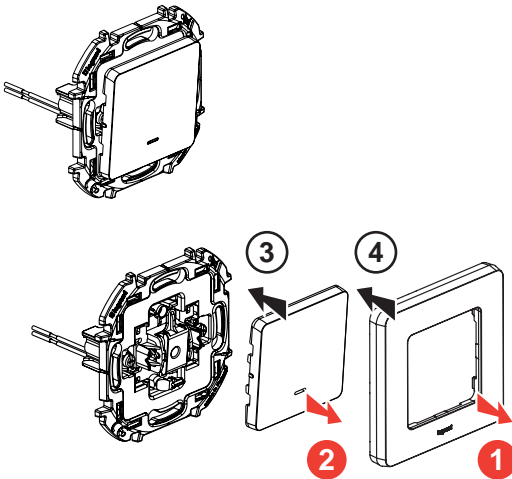


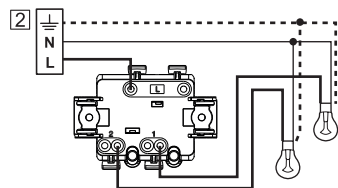
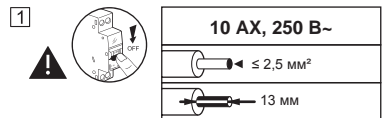
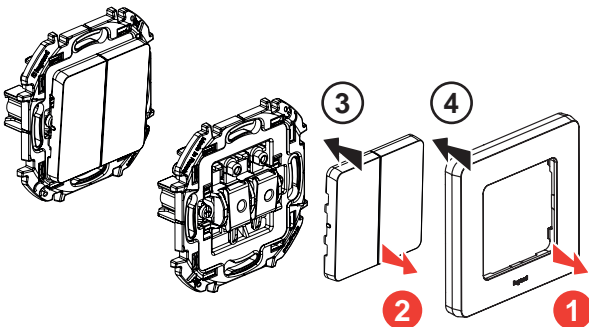
6 736 00/01/02/03



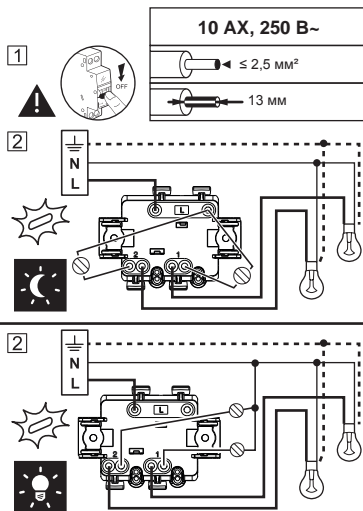
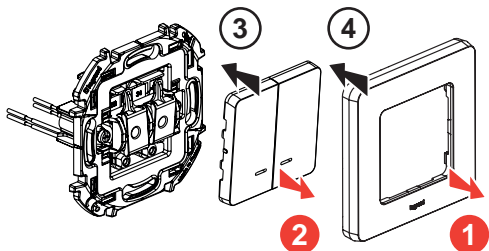
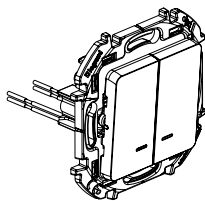
6 736 10/11/12/13



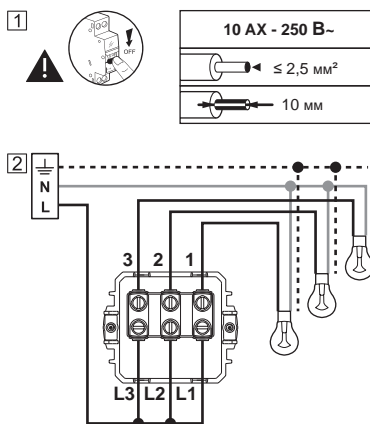
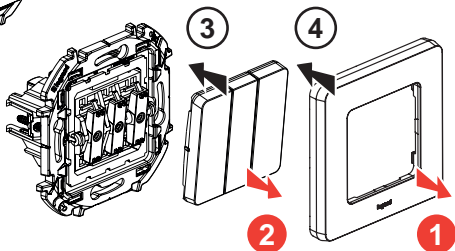
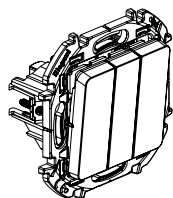
6 736 20/21/22/23



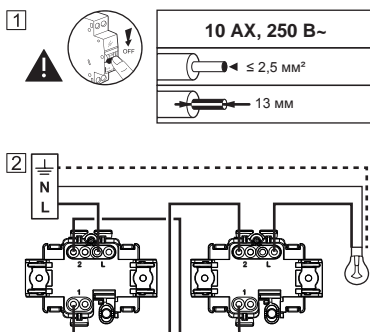
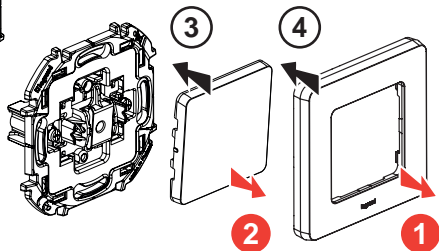
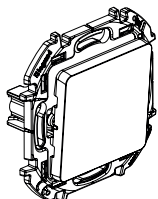
6 736 30/31/32/33



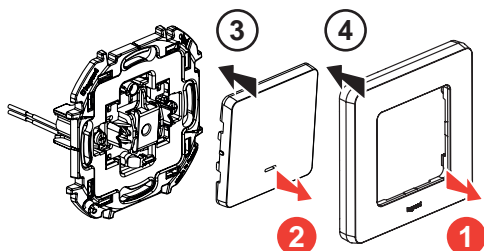
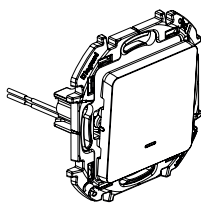
6 736 40/41/42/43


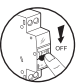
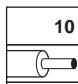




6 736 50/51/52/53

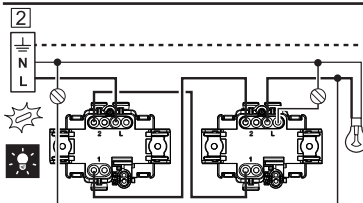
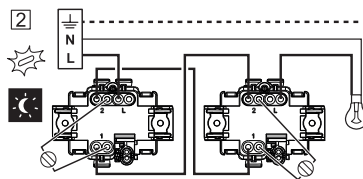


6 736 60/61/62/63

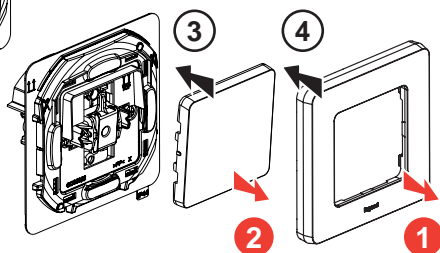
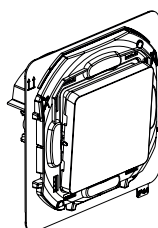



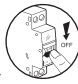
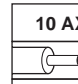
1   

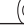

10 AX, 250 B~
 $\leq 2,5 \text{ mm}^2$
 13 MM

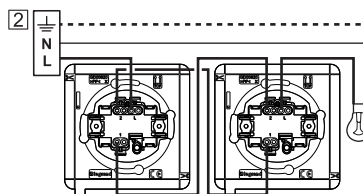


6 736 70/71/72/73

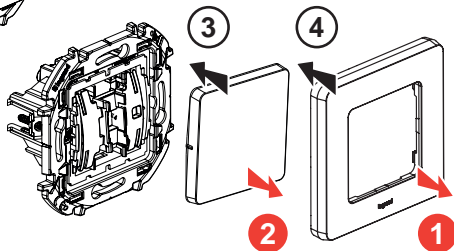
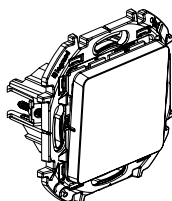



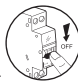
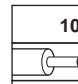
1   



10 AX, 250 B~, IP44
 $\leq 2,5 \text{ mm}^2$
 13 MM

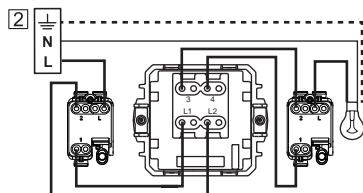


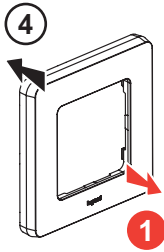
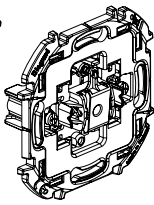
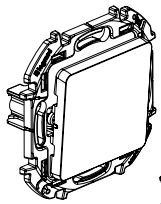
6 736 80/81/82/83



1   

10 AX, 250 B~
 $\leq 2,5 \text{ mm}^2$
 10 MM





1



6 A, 250 B~

≤ 2,5 mm²

13 mm

2

