




# Quick Installation Guide

## Wireless 4G LTE Router

Images may differ from actual products.


©2019 TP-Link 7106508324 REV4.1.1

## 2. Verify the Hardware Connection

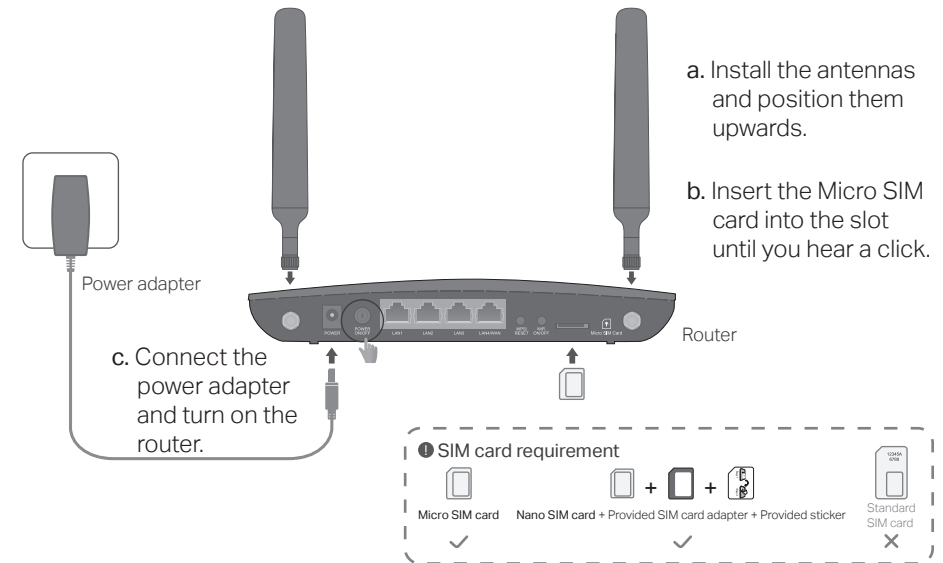
Check the following LEDs' status. If the Internet LED  is on, your router is connected to the internet successfully.



Note: If the Internet LED does not turn on, please refer to Q2 of [Need Help?](#) in this guide.

For better internet connection, make sure **2 or 3 bars** of the Signal Strength LED  are lit. Otherwise, try relocating the router to a spot that may receive a stronger mobile network signal, such as near a window.

## 1. Connect the Hardware



## 3. Enjoy the Internet

### • Wired

Connect your computers to the router's LAN ports via Ethernet cables.

### • Wireless

a. Find the SSID (network name) and wireless password printed on the label at the bottom of the router.

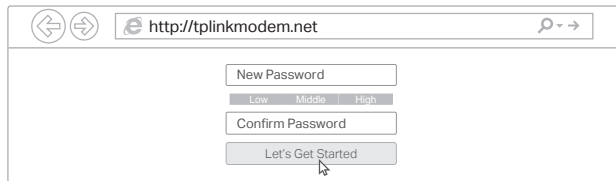


b. Click the network icon of your computer or go to Wi-Fi settings of your smart device, and then select the SSID to join the network.

# Customize the 4G LTE Router

1. Make sure your computer is connected to the router (wired or wireless).
2. Launch a web browser and type in <http://tplinkmodem.net> or <http://192.168.1.1>. Create a new password for future logins.

Note: If the login page does not appear, please refer to Q1 of **Need Help?** in this guide.







3. Follow the step-by-step instructions of the **Quick Setup** to complete the initial configuration.

Note: The router can also be used (or configured) in Wireless Router Mode for ADSL/Cable connections. For more advanced configurations, please refer to the user guide on TP-Link official website at [www.tp-link.com](http://www.tp-link.com).

# Tether App

The TP-Link Tether app provides a simple, intuitive way to access and manage your router.



-  Block unwelcome users from connecting to your network
-  Change the basic wireless network settings
-  View information about clients connected to your router
-  Set up Parental Controls with access time

## How to begin?

1. Download the TP-Link Tether app from the Apple App Store or Google Play Store.
2. Ensure your smart device is wirelessly connected to the home network.
3. Launch the Tether app and start managing your home network.



Scan to download

## Need Help?

### Q1. What should I do if I cannot access the web management page?

- If the computer is set to a static IP address, change its settings to obtain an IP address automatically.
- Make sure <http://tplinkmodem.net> or <http://192.168.1.1> is correctly entered in the web browser.
- Use another web browser and try again.
- Reboot your router and try again.
- Disable and enable the active network adapter in use.

### Q2. What should I do if I cannot access the internet?

- Verify that your SIM card is an LTE or WCDMA card.
- Verify that your SIM card is in your internet service provider's service area.
- Verify that your SIM card has sufficient credit.
- Check the LAN connection: Open a web browser and enter <http://tplinkmodem.net> or <http://192.168.1.1> in the address bar. If the login page does not appear, refer to Q1 and then try again.
- Launch a web browser, log in to the web management page, and check the following:
  - 1) Go to **Advanced > Network > Internet** to verify the parameters provided by your ISP are correctly entered. If the parameters are incorrect, click **Create Profile** and enter the correct parameters, then select the new profile from the **Profile Name** list.
  - 2) Go to **Advanced > Network > PIN Management** to verify if PIN is required. If it is, enter the correct PIN provided by your ISP, and click **Apply**.
  - 3) Go to **Advanced > Network > Data Settings** to verify if the **Total/Monthly Used** exceeds the **Total/Monthly Allowance**. If it does, click **Correct** and set **Total/Monthly Used** to 0 (zero), or disable **Data Limit**.

- 4) Go to **Advanced > Network > Internet** to verify that Mobile Data is enabled. If it is not, enable it to access the internet.
- 5) Confirm with your ISP if you are in a roaming service area. If you are, go to **Advanced > Network > Internet** to enable Data Roaming.

### Q3. How do I restore the router to its factory default settings?

- With the router powered on, press and hold the **WPS/RESET** button on the rear panel of the router until the Power LED starts flashing, then release the button. Wait while the router resets.
- Log in to the web management page of the router, and go to **Advanced > System Tools > Backup & Restore**, click **Factory Restore** and wait until the reset process is complete.

### Q4. What should I do if I forget my web management page password?

- Refer to Q3 to reset the router, then create a new password to log in.

### Q5. What should I do if I forget my wireless network password?

- The default wireless password is printed on the product label of the router.
- Connect a computer directly to the router using an Ethernet cable. Log in to the router's web management page and go to **Basic > Wireless** to retrieve or reset your wireless password.



For technical support, the user guide and other information, visit <https://www.tp-link.com/support>.

#### Safety Information

- Keep the device away from water, fire, humidity or hot environments.
- Do not attempt to disassemble, repair, or modify the device.
- Do not use damaged charger or USB cable to charge the device.
- Do not use any other chargers than those recommended.
- Do not use the device where wireless devices are not allowed.
- Adapter shall be installed near the equipment and shall be easily accessible.