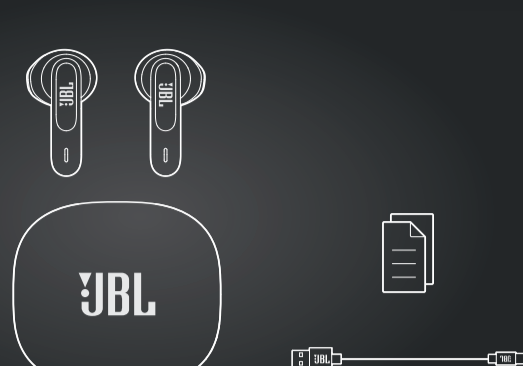


# QUICK START GUIDE

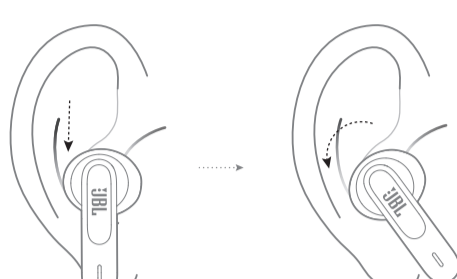
WAVE300 TWS



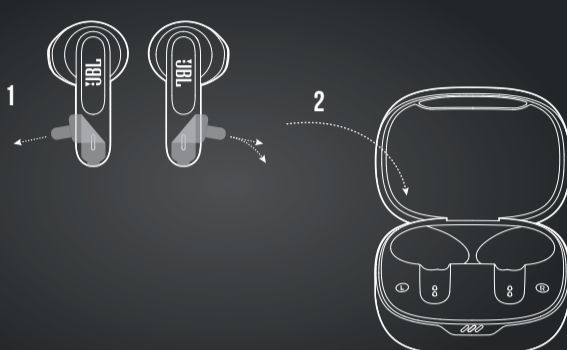
## WHAT'S IN THE BOX



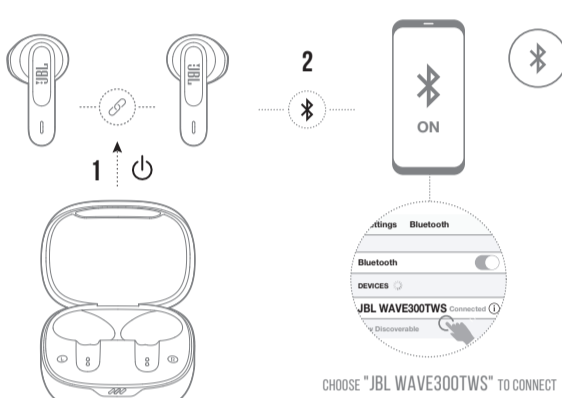
## HOW TO WEAR



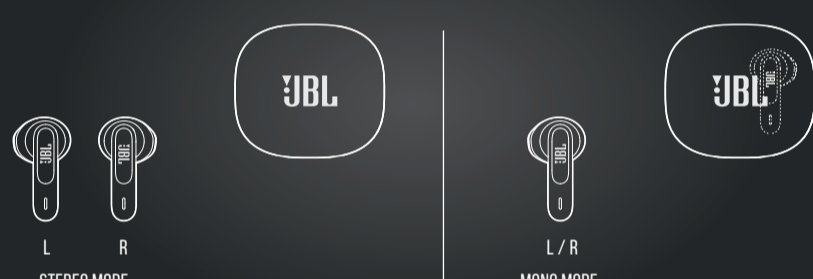
## FIRST TIME USE



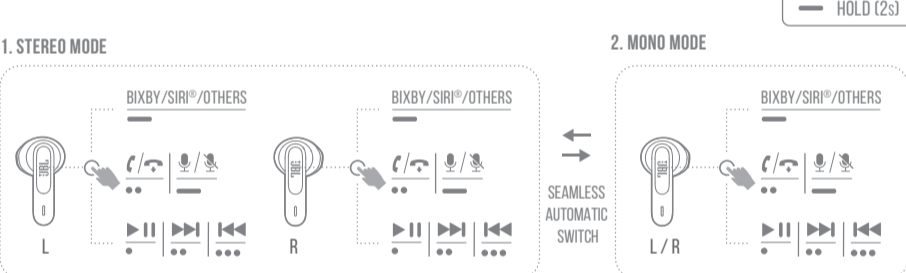
## POWER ON & CONNECT



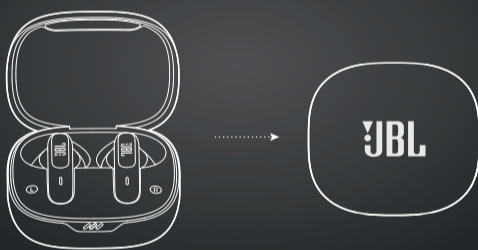
## DUAL CONNECT



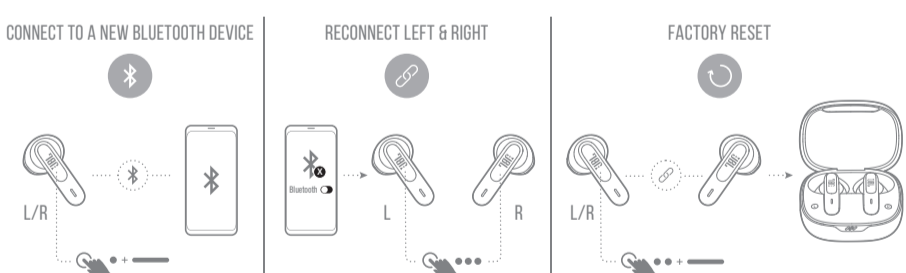
## CONTROLS



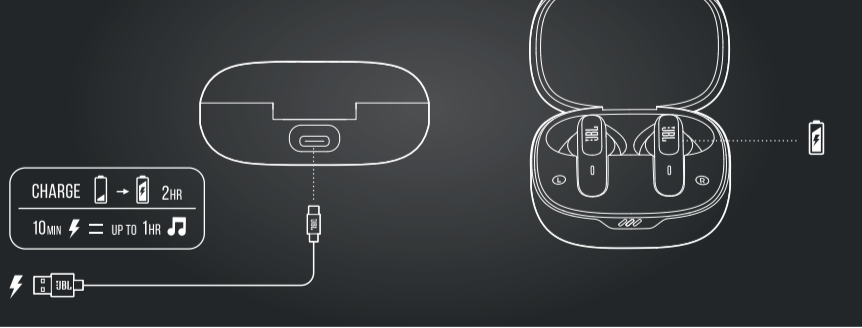
## POWER OFF



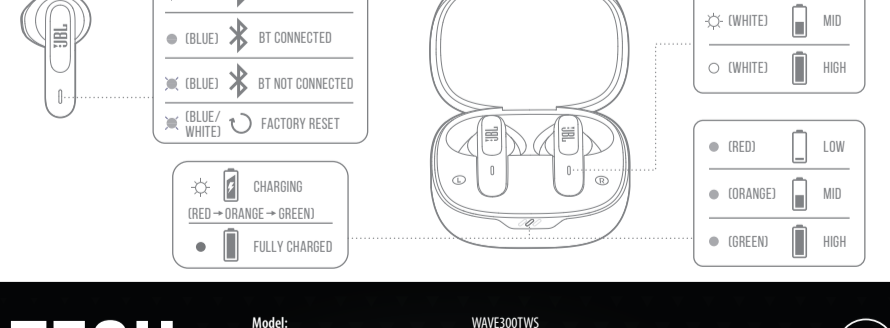
## MANUAL SETUP



## CHARGING



## LED BEHAVIORS



## TECH SPEC

Model:	WAVE300TWS
Driver size:	12 mm / 0.47" Dynamic Driver
Power supply:	5V --- 1A
Earbud:	3.85 g per pc (7.7 g combined) / 0.009 lbs per pc (0.017 lbs combined)
Charging case:	36 g / 0.079 lbs
Earbud battery type:	Lithium-ion polymer (40 mAh / 3.85 V)
Charging case battery type:	Lithium-ion polymer (500 mAh / 3.8 V)
Charging time:	< 2 hrs from empty
Music playtime with BT on:	up to 6 hrs
Frequency response:	20 Hz – 20 kHz
Impedance:	32 ohm
Sensitivity:	105 dB SPL@1 kHz
Maximum SPL:	95 dB
Microphone sensitivity:	-38±2 dBV/Pa@1 kHz
Bluetooth version:	5.2
Bluetooth profile version:	A2DP V1.3 AVRCP V1.6 HFP V1.7
Bluetooth transmitter frequency range:	2.4 GHz – 2.4835 GHz
Bluetooth transmitter power:	< 12 dBm
Bluetooth modulation:	GFSK, π/4-DQPSK, 8-DPSK
Maximum operation temperature:	45 °C

