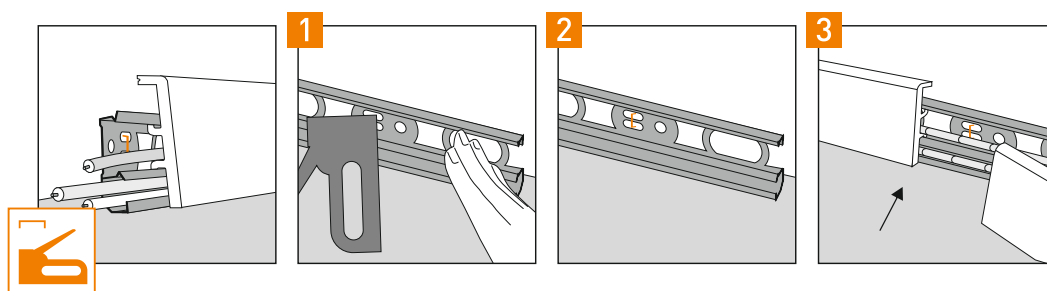
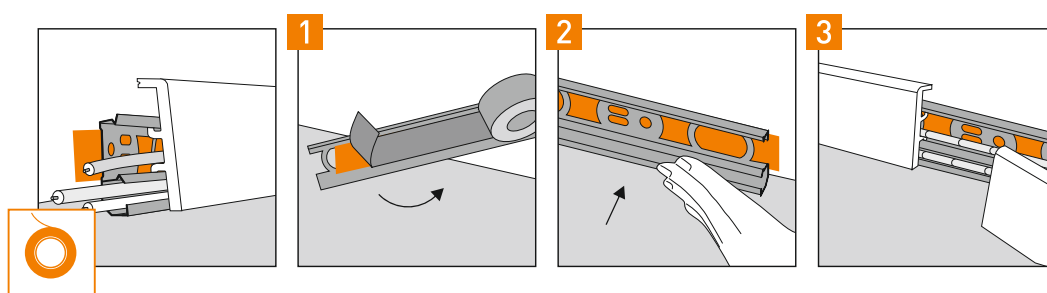
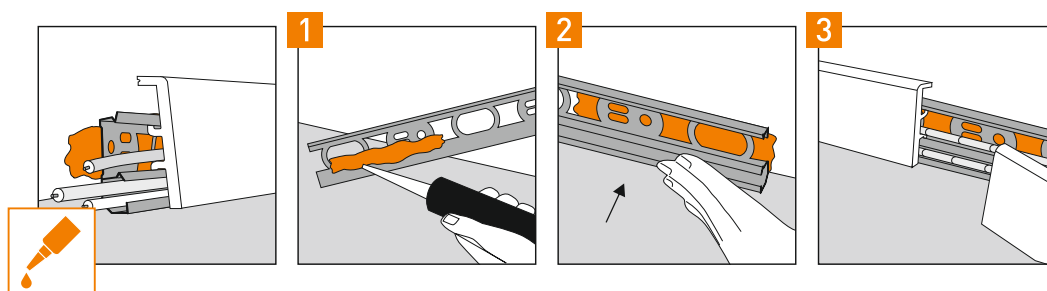
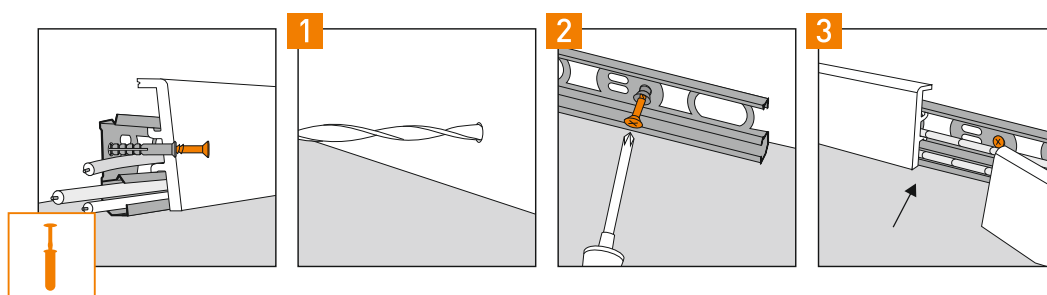




SZYNA - 4 WAY SYSTEM

Монтаж на шине - 4 способа монтажа

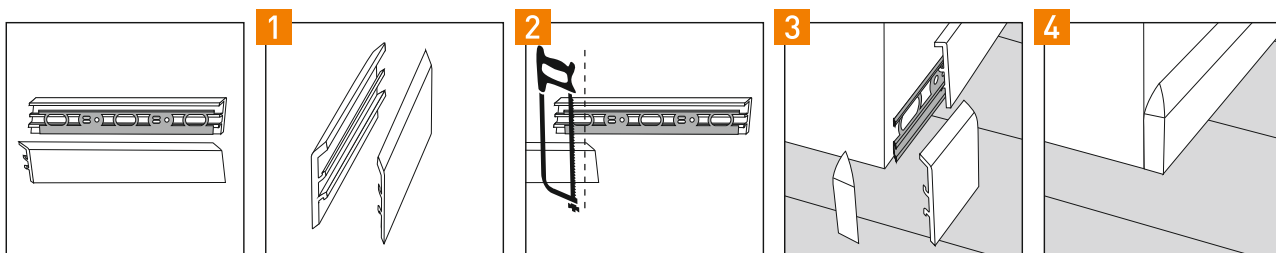
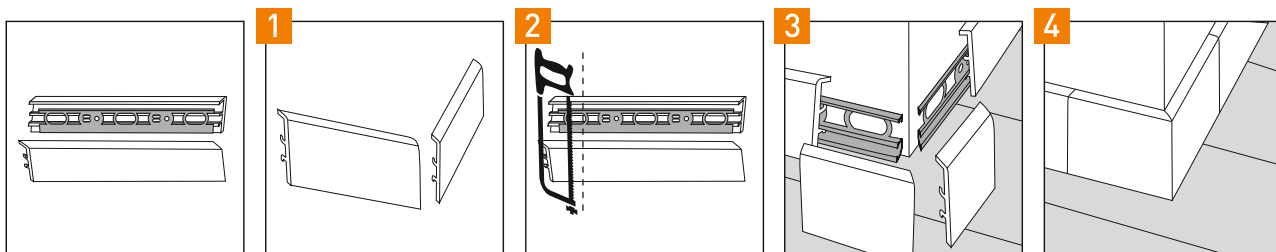
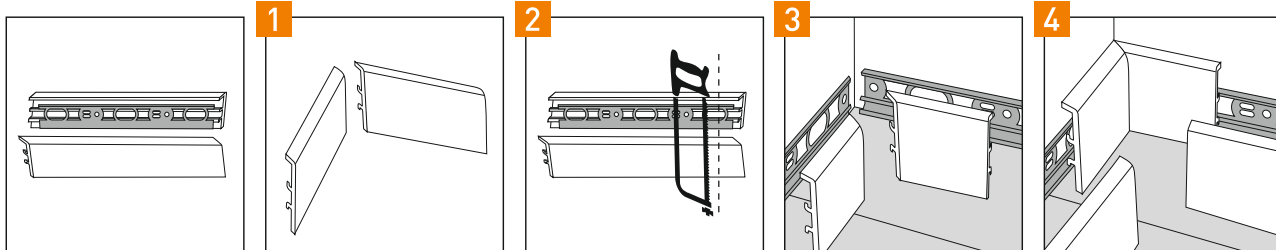
INTEGRA / VEGA / INDO



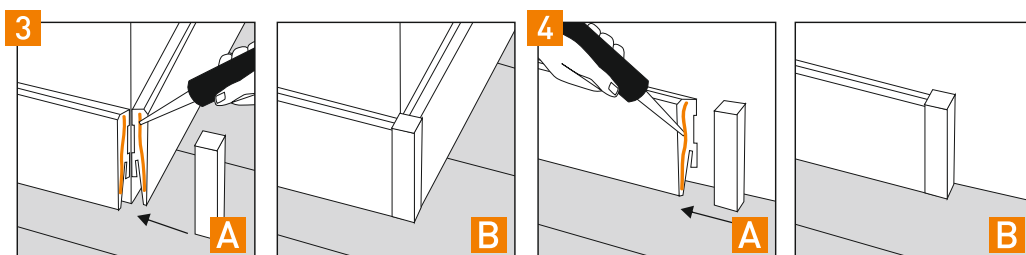
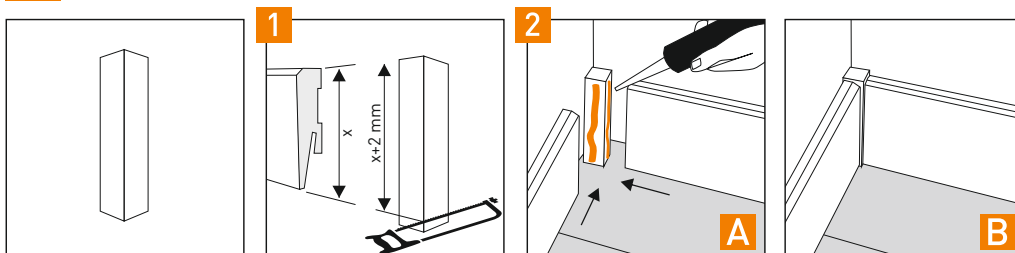
Finishing the corners

Отделка углов

A CORNER FOR VEGA / INTEGRA) / УГОЛ (для VEGA / INTEGRA)



B BLOCK FOR VEGA) / Блок (для VEGA)



MONTAGE

МОНТАЖ

C ACCESSORIES FOR INDO ONLY / АКССУАРЫ (ТОЛЬКО ДЛЯ INDO)

