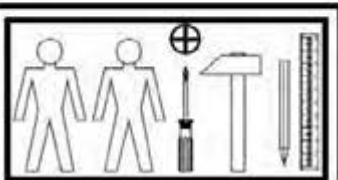
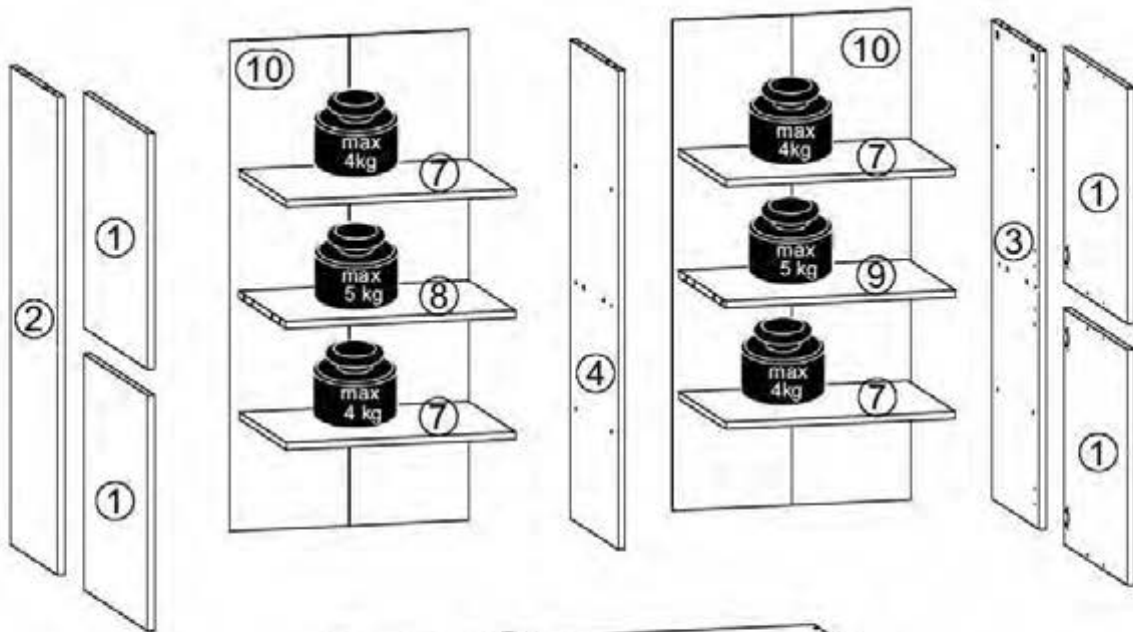


A

ZLATA

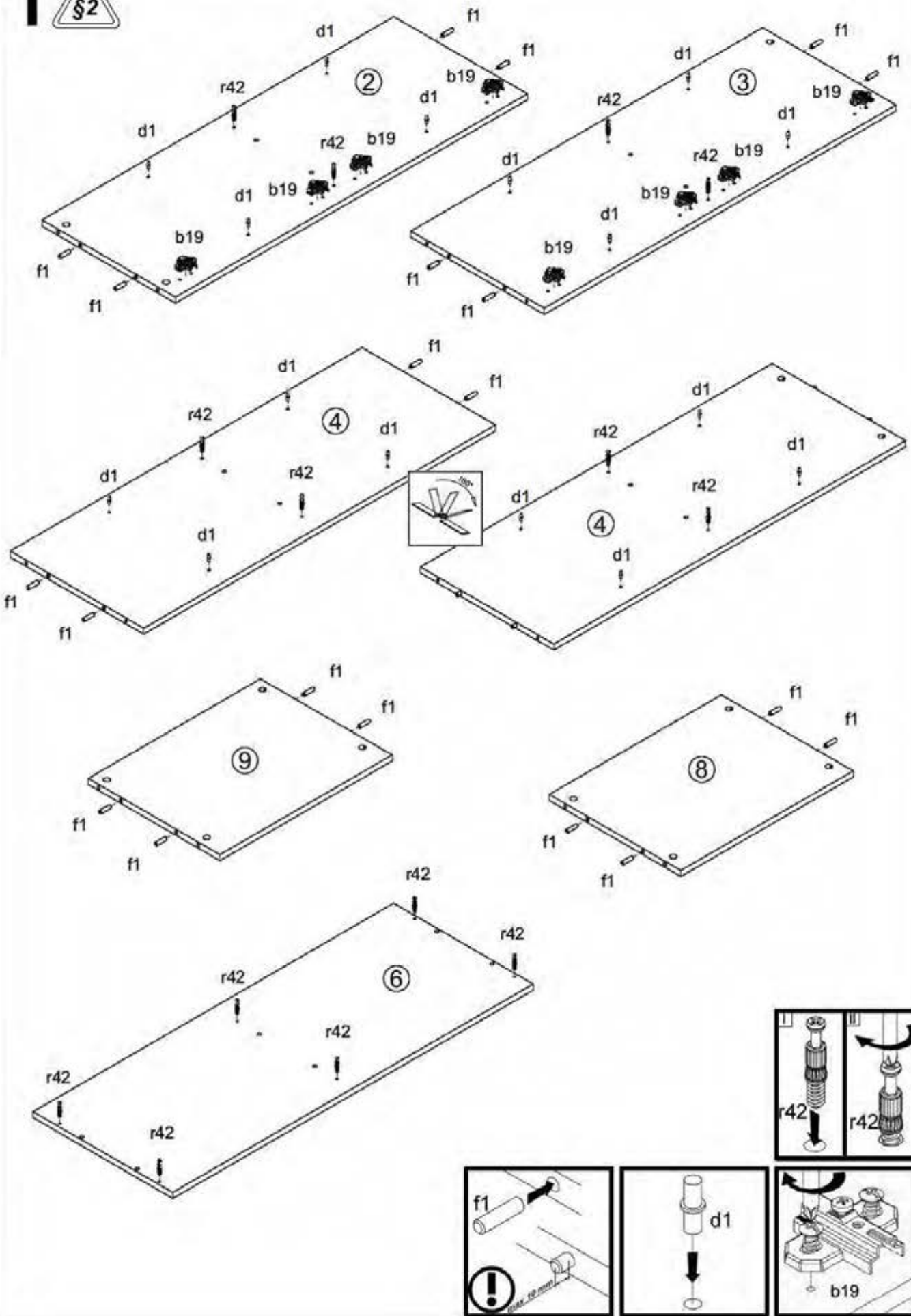
KOM4D

A	B	C	D	
1	S383 00007	500	516	3/3
2	S383 11011	1015	385	1/3
3	S383 11012	1015	385	1/3
4	S383 11013	1015	385	1/3
5	S383 22009	1040	403	2/3
6	S383 22010	1040	403	2/3
7	S383 33004	495	380	1/3
8	S383 33005	495,5	380	1/3
9	S383 33006	495,5	380	1/3
10	S383 99503	1042	258	2/3

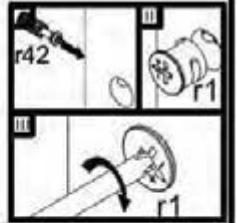
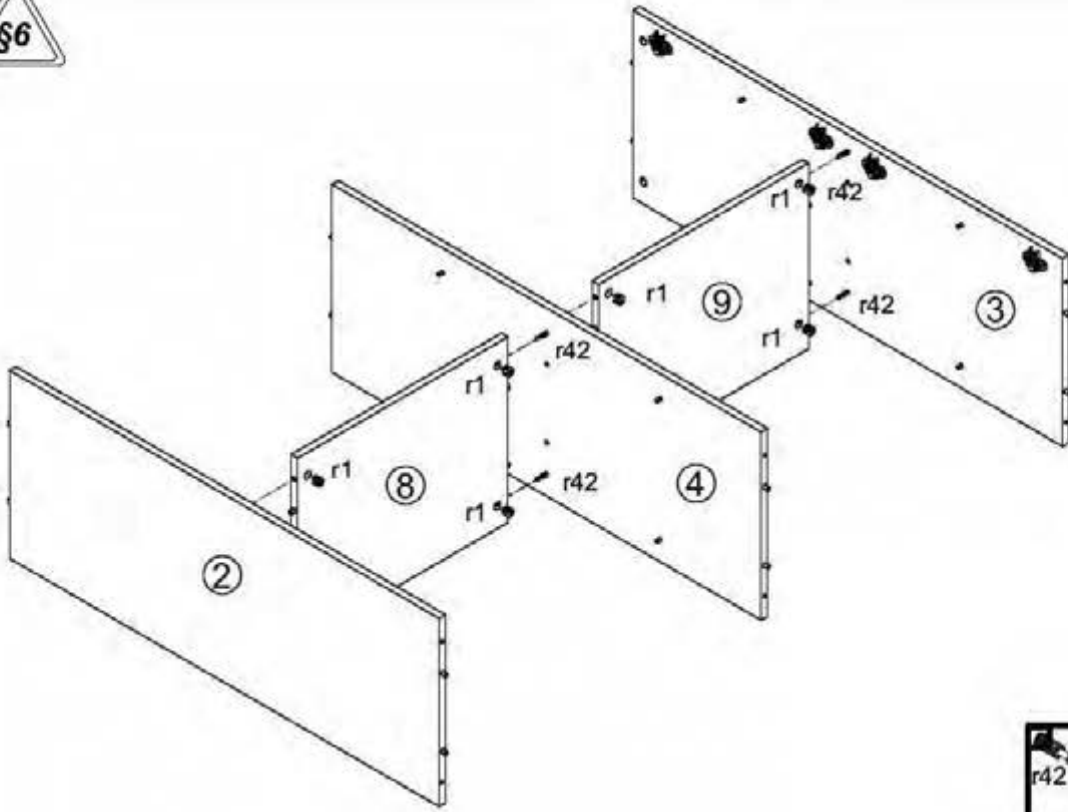


8x a44	8x b19	4x c409	16x d1	6x e1	10x e3	20x f1	5x k8211	5x k8212
6x n108	8x o21	16x p51	6x p55	8x p93	14x r1	14x r42	6x s2	50x l1
1x z1								
							1x n2611	1x p38

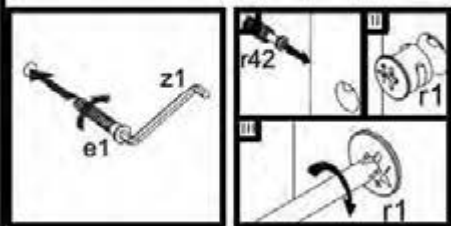
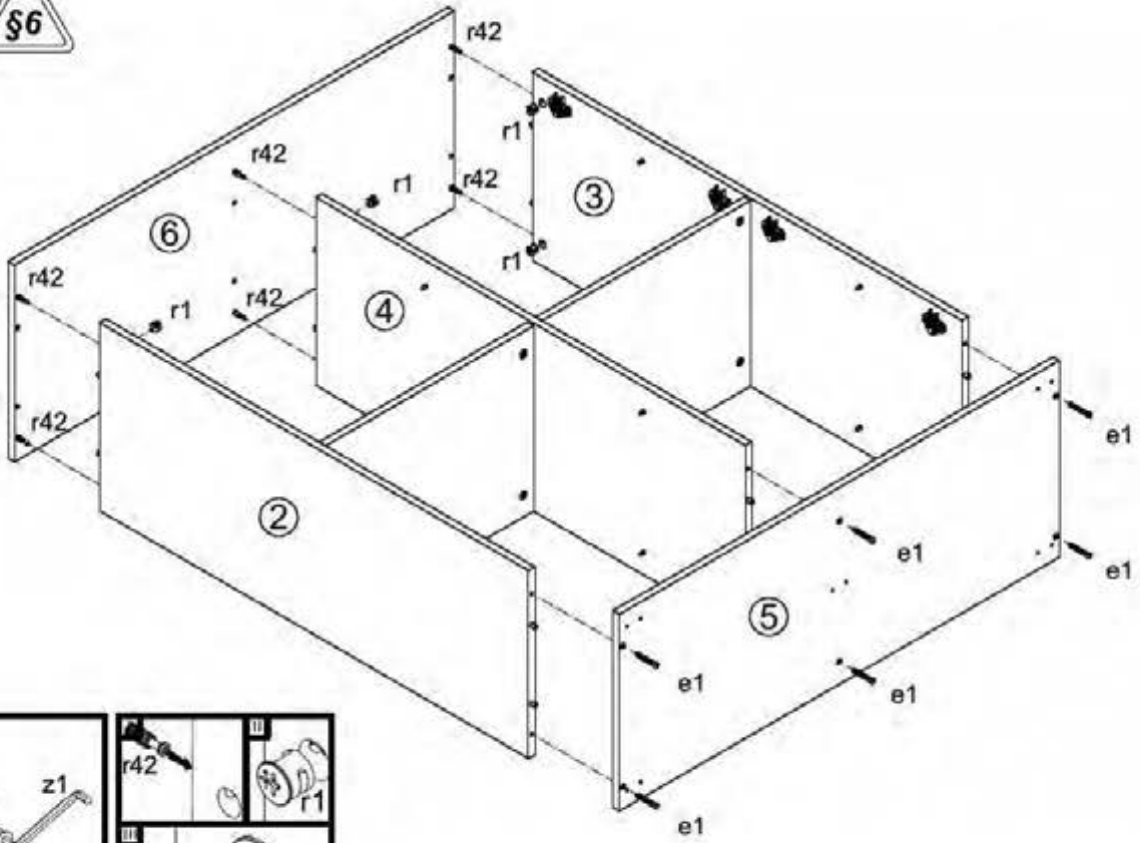
1



2 



3 



3 / 4

