

**MONTANA<sup>®</sup>**  
**CANS** *MONTANA*

# TECH SPRAYS & EFFECTS

CLEAN, PRIME AND SEAL PROFESSIONALLY  
CREATE STUNNING EFFECTS



[WWW.MONTANA-CANS.COM](http://WWW.MONTANA-CANS.COM)

**TM.by**  
ONLINE STORE

<https://tm.by>  
Интернет-магазин TM.by

## EFFECT SPRAYS

- 06 VINTAGE EFFECT
- 08 UV-EFFECT Transparent
- 10 METALLIC EFFECT
- 12 MARBLE Effect
- 14 CRACKLE Effect
- 16 GLITTER Effect
- 18 GRANIT Effect
- 20 NIGHTGLOW Effect

## TECH SPRAYS

- 24 TEXTURE Coat
  - 26 STYROFOAM PRIMER
  - 28 METAL PRIMER
  - 30 PLASTIC PRIMER
  - 32 UNIVERSAL PRIMER
  - 34 VARNISH Spray
  - 36 ACETONE Spray
  - 38 REMOVER Spray
  - 40 ADHESIVE-permanent
- 
- 42 Mixed Media
  - 44 Starting a spray can
  - 46 General Information
  - 48 New Montana Blog



MONTANA-CANS

# TECH SPRAYS & EFFECTS

The use of aerosol cans in the creative process has increased drastically in recent years. Montana Cans has been at the forefront of these developments assisting artists and creative people in general with the highest quality tools for their work. This is no exception for the TECH and EFFECT series that have spawned through innovation and necessity.

Technical sprays have been present in the Montana Cans assortment for a long time in various forms. However, never before have the options been so diverse and easy to use as now, offering the best results for users of all skill levels. We are proud to present the developments in the TECH and EFFECT ranges with many new innovations coming just around the corner.



МОНАНА



MONTANA-CANS

# EFFECT SPRAYS

DECEIVINGLY REAL CREATIVE  
FAUX FINISHES

The new Montana EFFECT sprays add a whole new dimension to being creative. New effect spray like UV-EFFECT and METALLIC have been introduced to enable an even wider array of effects and surfaces to be possible. The EFFECT series features the Montana GLITTER effect, MARBLE effect, CRACKLE effect and GRANIT effect sprays. From the futuristic optically illusive GLITTER spray, with it's enchanting galactic sparkle, to the historically distressed look of the CRACKLE spray, the Montana EFFECT series is ideal for indoor or outdoor creative work and is to use in conjunction with the Montana GOLD and Montana ACRYLIC marker product ranges. Every surface can be transformed into a whole new visual landscape. With further EFFECT products being developed, this series is destined to please.





without VINTAGE Filter    after VINTAGE Filter was applied



## AVAILABLE COLOR:



EV1050 Yellowing Effect  
TNR: 477041

# VINTAGE EFFECT

## TRANSPARENT YELLOWING EFFECT VARNISH SPRAY FOR A YELLOWISH USED & VINTAGE LOOK

Ever found yourself lost in the romance of second hand shops or yard sales, looking at all the retro and vintage objects and wondering what stories lay behind the aging facade? Now you too can create that fl air yourself on almost any object or surface and upcycle it into something inspiring or functional. Whether your an experienced DIY-ist or new to arts and crafts, Montana VINTAGE Spray Filter is the tool for your retro project. VINTAGE Spray is a solvent-based, high quality acrylic, low pressure effect spray. The yellow transparent coating is a UV-resistant, quick drying semi-gloss fi nish that brings best results on white or light colors. Montana VINTAGE Spray is perfect for all creative workers that are trying to create a vintage or aged looking effect. Applying Montana VINTAGE Spray to your favorite black and white photos can create an authentic looking vintage touch.



IF  
I  
HAD  
A  
HAMMER



TRANSPARENT EFFECT THAT ILLUMINATES WHEN EXPOSED  
TO UV LIGHT WITH A GLOWING, BLUE-PURPLE COLOR!

UV1000 UV Transparent Effect  
TNR: 449826

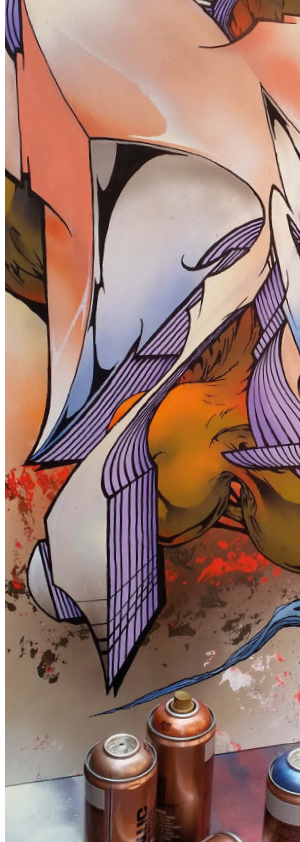


# UV-EFFECT TRANSPARENT

**TRANSPARENT UV-SPRAY WITH  
FLUORESCENT EFFECT!  
ONLY VISIBLE UNDER INCIDENT UV LIGHT!**

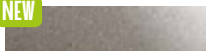
Montana UV-EFFECT is a transparent effect paint that is only visible under direct UV light. Able to be sprayed on nearly any substrate, the colorless and semi-gloss paint is not visible in sunlight rather illuminates when exposed to UV light with a glowing, blue-purple color. Ideal for indoor use, the luminous spray can be a great tool not just for making art or art happenings, but also in practical contexts such as Guerilla Marketing, night clubs, venue and property marking. The Montana UV-EFFECT Spray can be applied to numerous substrates such as coated and uncoated screens, masonry, wood, glass and more. The UV light effect becomes more prevalent, the more coats are applied particularly when applied with a stencil. Visibility: Due to the UV EFFECT's semi-gloss finish, the UV EFFECT spray can be slightly visible if painted on a matt substrate.





## AVAILABLE METALLIC COLORS:

**NEW**



EMC 1010 Titanium  
TNR 494130



EMC 3020 Red  
TNR 473043



EMC 6210 Tennessee  
TNR 448720

**NEW**



EMC 1030 Aztec Gold  
TNR 494123



EMC 3110 Rosé  
TNR 473050



EMC 6250 Caribbean  
TNR 448737



EMC 1050 Gold  
TNR 448683



EMC 4230 Plum  
TNR 473067



EMC 7010 Silver  
TNR 448744



EMC 2010 Champagner  
TNR 448690



EMC 5030 Ice Blue  
TNR 448713



EMC 7060 Graphit  
TNR 448751



EMC 2050 Copper  
TNR 448706



EMC 6040 Avocado Green  
TNR 494116



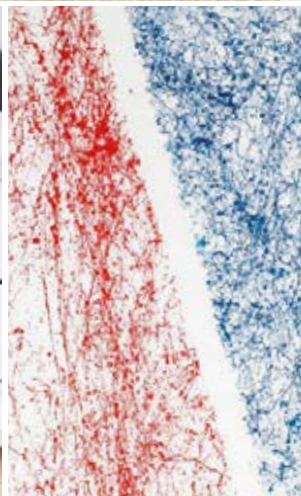
EMC 9000 Black  
TNR 448768

# METALLIC EFFECT

## HIGH-COVERING ABRASION PROOF METALLIC EFFECT COLORS

The Montana Metallic Effect Sprays bring state of the art paint technology to traditional metallic effect colors. Loaded with a Montana Standard cap, these cans provide excellent delivery and reliability under medium pressure output. Not only are the Montana Metallic Effect colors ideal for application on functional objects such as bikes and furniture, they can also add a metallic flare to any creative or artistic project on paper, cardboard, primed canvas, wood, glass, metal, ceramics, porcelain, stone, acrylic and other paintable materials. Made from an Acrylic-Nitro Combination base, the paint surface dries to a durable semi-gloss finish which is both hard wearing when cured (24+ hours) as well as flexible. Offering great lightfastness, the Montana Metallic Effect line can also be combined with the Montana GOLD, Montana BLACK and Montana ACRYLIC marker lines.





## AVAILABLE MARBLE COLORS:



EMSILVER Silver TNR: 415371

NEW



EM3000 Red TNR: 493935

NEW



EM5000 Blue TNR: 493942



EM9000 Black TNR: 415357



EM9100 White TNR: 415364

# MARBLE EFFECT

## HIGH-COVERING SPRAY PAINT FOR A DECEIVINGLY REALISTIC MARBLE EFFECT

High-covering spray paint for a deceptively realistic marble effect. Can be used on many different surfaces such as paper, cardboard, primed canvas, wood, glass, metal, ceramics, porcelain, stone, acrylic and other paintable materials. The marble effect is formed by very fine colored paint strands on the surface area of the object in question. The area which is to be sprayed is not entirely covered and will stay partially visible. Can be top-coated with many common lacquer types once thoroughly dry. MARBLE Effect can be combined with Montana GOLD, Montana ACRYLIC markers and customary acrylic paints. The Marble Effect can come standard with a calligraphy that can be adjusted to create spray output lines in vertical, horizontal or variations thereof.

VIDEO: [WWW.MONTANA-CANS.COM/HOWTO](http://WWW.MONTANA-CANS.COM/HOWTO)





## AVAILABLE CRACKLE COLORS:



EC8004 Copper Brown RAL8004  
TNR: 416471



EC5010 Gentian Blue RAL5010  
TNR: 416440



EC6000 Patina Green RAL6000  
TNR: 418457



EC7000 Squirrel Grey RAL7000  
TNR: 418464



EC9010 Pure White RAL9010  
TNR: 418488



EC9017 Traffic Black RAL9017  
TNR: 418495

# CRACKLE EFFECT

## EFFECT LACQUER FOR A SPECIAL VINTAGE LOOK

For the special crackle- or used-look. Prior coating of the object is necessary with colors of Montana GOLD (recommended) or Montana WHITE (the thicker the base coat the stronger the effect). Give at least 45min but not more than 24hours drying time to the base coat before applying CRACKLE effect. While spraying change directions (cross-coat) for best coating results. After extensively applying CRACKLE to your primed area, the distressing process will begin to occur. CRACKLE can be top-coated when fully dry and cured (after 24h) with Montana GOLD, BLACK, WHITE, Montana ACRYLIC markers as well as customary acrylic paints. Pre Priming with Montana Styrofoam primer is required for application on polystyrene. Available in 6 RAL colors. More information on:

**VIDEO: [WWW.MONTANA-CANS.COM/HOWTO](http://WWW.MONTANA-CANS.COM/HOWTO)**





Example shows Glitter effect applied with a stencil on a black primed canvas.

VIDEO ONLINE: [WWW.MONTANA-CANS.COM/HOWTO](http://WWW.MONTANA-CANS.COM/HOWTO)



EGCSILV Silver Transparent  
TNR: 415425



# GLITTER EFFECT

## GLOSSY TRANSLUCENT VARNISH WITH SILVER GLITTER PARTICLES

Glossy translucent paint with silver colored glitter particles for a metallic effect giving objects and artworks of all kinds a refined finish. Applicable on many different surfaces such as paper, cardboard, primed canvas, wood, glass, metal, ceramics, porcelain, stone, acrylic and other paintable materials. After being applied, a thin shiny lacquer coat will show with a fine distribution of glitter particles. Further coats will lead to a higher density of particles and intensify of the effect. We recommend finishing your project with the Montana VARNISH Gloss to enhance the metallic effect. Please consider that the achieved final result will significantly be influenced by the color and gloss level of the undercoat. The glitter particles are carried in a clear base that can easily be covered with many common lacquer types. Can be combined with Montana GOLD, Montana ACRYLIC markers and conventional acrylic paints.





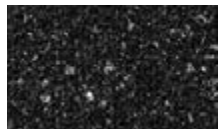
works perfectly on styrofoam without prior priming due to styrofoam-friendly water-base



## AVAILABLE CRACKLE COLORS:



EG8000 Brown TNR: 415418



EG9000 Black TNR: 415401



EG7000 Light Grey TNR: 415388



EG7050 Grey TNR: 415395

VIDEO ONLINE: [WWW.MONTANA-CANS.COM/HOWTO](http://WWW.MONTANA-CANS.COM/HOWTO)

# GRANIT EFFECT

## WATER-BASED SPECIAL EFFECT SPRAY PAINT

Water-based special effect spray paint with fine plastic particles for a deceptively realistic granite effect. Applicable on many different surfaces such as paper, cardboard, primed canvas, wood, glass, metal, ceramics, porcelain, stone, polystyrene and other paintable acrylic materials. The Montana GRANIT Effect is very high covering. For best results it is advisable to prime your surface when using light colored GRANIT Effect shades, particularly when painting on dark surfaces. We recommend using the Montana PRIMER or the Montana TEXTURE spray. The latter will enhance the GRANIT look even more. Can be top-coated once thoroughly dry. Can be combined with Montana GOLD, Montana ACRYLIC markers and standard acrylic paints. The GRANIT Effect spray also works well as a structure spray. Lightly coat dry areas to receive the desired granite-look. Available in the following colors: light grey, grey, brown and black.





## AVAILABLE COLORS:



NG1000 Luminescent Green  
TNR: 376245

NEW



NG2000 Luminescent Orange  
TNR: 448492

# NIGHTGLOW

## EFFECT

### LUMINESCENT EFFECT PAINT

Montana NIGHTGLOW is a high-grade acrylic paint which contains luminescent pigments that store light and emit the light in darkness. This luminescent effect is only visible in total darkness. The length of glowing time is dependent on the intensity of the light charge and thickness of the paint layer (it is recommended to apply multiple layers of NIGHTGLOW paint lacquer on a primed surface). The glowing effect is strongest immediately after charging the painted object and then it starts to fade. For best effect, use a strong light source to charge, then allow paint to glow in a completely dark environment. The effect spray is suitable for all smooth, rough or light responding primed surfaces such as metal, wood, hard plastics, primed carton, walls etc. Drying time can vary depending on substrate. Limited resistance to weathering, light and UV-influences. To improve UV-resistance seal with Montana VARNISH Gloss. Recommended to use with Montana Fat caps. Available as 400ml.



MONANA



# THE MONTANA TECH SPRAYS

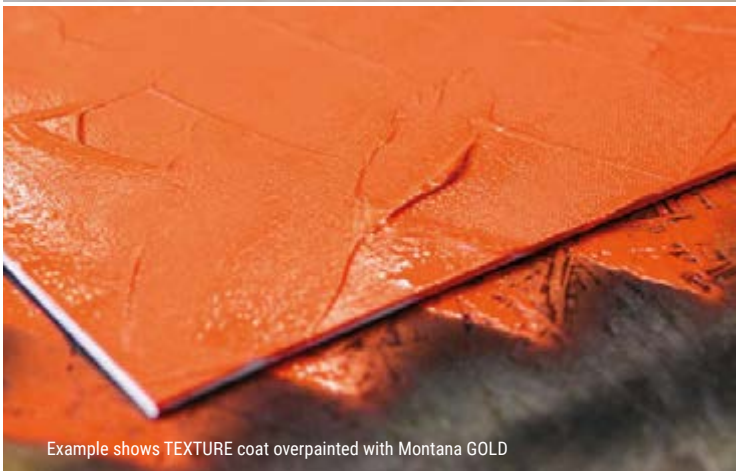
**CLEAN, PRIME AND SEAL  
PROFESSIONALLY!**

The Montana TECH series offers different sprays as a perfect addition to Montana color and effect sprays. Besides three Varnishes there are now four special Primers for professional pre-treatment of different surfaces. ACETONE spray serves as a thinner or cleaner. Montana REMOVER can be used to remove paint residues from cement and other surfaces. A further new innovation are the Montana ADHESIVES, which are offered in both permanent and repositionable (great for use with stencils and patterns). Endless possibilities of new techniques and effects can be achieved using the TECH sprays and Montana GOLD together!





Example shows TEXTURE spray applied on a canvas and shaped with a scraper



Example shows TEXTURE coat overpainted with Montana GOLD

VIDEO ONLINE: [WWW.MONTANA-CANS.COM/HOWTO](http://WWW.MONTANA-CANS.COM/HOWTO)



T8000 Texture Grey  
TNR: 415432



# TEXTURE COAT

## THICK COATING SPRAY

Grey texture spray to generate sculptured impasto surfaces. Suitable for creative works of all kinds, as well as filling material to patch up small irregularities such as cracks, holes or as a foundation. Applicable on many different surfaces such as wood, glass, stone, ceramics, porcelain, acrylic and other non-elastic surfaces. By spraying your object with a thick layer of the TEXTURE spray, the foundation will be coated with a high-grade, well adhering substance that can be molded while wet to achieve the desired structure. The structure spray can be wet sanded after a very short drying time. After thoroughly dry and cured, TEXTURE spray can be top-coated with many common lacquer types. The TEXTURE spray has good adherence and is highly water resistant. TEXTURE spray offers increased anticorrosive protection to the surfaces it is applied to.





POLYSTYRENE PRIMER applied in several layers to seal the surface completely



T 2200 Polystyrene Primer  
TNR: 376337

# POLYSTYRENE **PRIMER** FOR POLYSTYRENE SURFACES

The Montana Polystyrene Primer provides for an additional (protection) layer on Polystyrene, which makes varnishing with acid free paint possible. The primer seals the styro-foam and avoids destructive reaction of the lacquer. Always test before use on a non-visible area of the object. Drying time varies depending on temperature and humidity and may take a few hours. Available as 400ml.

**WATCH THE HOW TO USE VIDEO ONLINE:**

[WWW.MONTANA-CANS.COM/HOWTO](http://WWW.MONTANA-CANS.COM/HOWTO)





For a better adhesion and enhanced longevity it is recommended so prime metallic surfaces with Montana METALL PRIMER prior to application of spray paint

T 2400 Metall Primer  
TNR: 376320

# METAL PRIMER

## FOR METAL SURFACES

The new Montana Metal Primer - a quick drying primer for the perfect pre-treatment of metal surfaces that need to be protected from rust. The primer can be used on metals like iron, steel or mineral surfaces. Montana Metal Primer can be used on Montana sprays with a synthetic, acrylic, or nitro-combination base. Always test before use. Drying time varies depending on temperature and humidity and might take a few hours. Available as 400ml.

**WATCH THE HOW TO USE VIDEO ONLINE:**

[WWW.MONTANA-CANS.COM/HOWTO](http://WWW.MONTANA-CANS.COM/HOWTO)





For enhanced longevity it is recommended so prime plastic surfaces with Montana PLASTIC PRIMER prior to application of further coats of spray paint

T 2000 Plastic Primer  
TNR: 376344

# PLASTIC PRIMER

## FOR PLASTIC SURFACES

Montana Plastic Primer is the perfect pre-treatment for plastic surfaces. After priming and drying, plastic surfaces can be painted with Montana sprays that have a synthetic, acrylic, or nitro-combination base. Can be used with the following types of plastic:

Polypropylene Rubber, Modified (EPDM),  
Acrylic Butadiene Styrene Plastics (ABS), Glass-Fibre Reinforced  
Plastics (GfK), Hard Polyvinyl Chloride (Hard-Pvc),  
Polyurethane (PUR), Polystyrene (PS), Polyamide (PA)

It is recommended to test before use. Drying time varies depending on temperature and humidity and may take a few hours. Available as 400ml.





Montana PRIMERS are perfect in combination with Montana GOLD spray paint



T 2300 Universal Primer  
TNR: 376344



# UNIVERSAL PRIMER

## FOR MULTIPLE SURFACES

Montana PRIMER enables excellent adhesion and further coating of synthetic, nitro-combination or acrylic spray paints. Montana offers different primers for application on different surfaces that need to be pre-treated such as plastic, metal and styrofoam. The Universal Primer also works on leather, cardboards, wood and many other materials. After the Primers have been applied you can work with Montana spray paints on the pre-treated ground. Use primers for efficient and more permanent results. Easy to apply, sand and re-coat. For indoor and outdoor applications (wearing a respirator mask is recommended). Cans which are not empty should be disposed of as "special refuse". Available as 400ml.





Montana VARNISH is available in 3 different gloss levels: Gloss, Semi Gloss and Matt and perfect to seal painted surfaces for further protection and brilliance



# VARNISH

## SPRAY

### UV-PROTECTION

Acid-free, quick drying, clear varnish made of acrylic base. No yellowing or de-saturation. For interior and exterior use. Can be used for art, hobby, crafts and DIY. Available in gloss, semi-gloss and matte finish. Gloss level shown on donut (see top of can). Protects and fixes paint on surfaces like canvas, paper, charcoal drawing, bast fibre, wood, photos, etc. Protects against oxidation. During application, protect the object and the surrounding area from over spray. Surfaces should be dry, clean of dust, oils and rust before applying the varnish. Available as 400ml.

Varnish Gloss

Varnish Semi Gloss

Varnish Matt





Montana ACETONE Spray / CAP CLEANER removes residues of paint and lacquer easily



works also as thinner which can be great for decorative effects!



Acetone Spray / Cap Cleaner  
TNR: 376382

# ACETONE

## SPRAY

### CLEANING AGENT & THINNER

Montana ACETONE Spray also known as CAP CLEANER is a universal thinner and cleaning agent that is transparent in color. Removes residues of paint, lacquer, silicone, wax, tar, and can be used for de-greasing. Suitable for pre-treatment before painting objects or to remove paint residues after painting. Suitable for cleaning caps, brushes and air brush, used as Cap Cleaner - put used nozzles on the ACETONE can and clean by spraying. USE: Can be used on porcelain, glass, ceramics, blank metals and others. Evaporates quickly without leaving residues. Non-corrosive. Always test spray on a non-visible area to check for any reactions to lacquer or paint, especially when used on plastic grounds as it may etch synthetic surfaces. ACETONE offers a great variety of applications and can also be used as thinner for effects.

VIDEO ONLINE: [WWW.MONTANA-CANS.COM/HOWTO](http://WWW.MONTANA-CANS.COM/HOWTO)





Montana REMOVER dissolves and removes lacquers quickly and thoroughly



VIDEO ONLINE: [WWW.MONTANA-CANS.COM/HOWTO](http://WWW.MONTANA-CANS.COM/HOWTO)



Remover TNR: 376290

# REMOVER

## SPRAY

### PAINT STRIPPER

Pollution free etching spray for most usual types of lacquer. Montana REMOVER Spray dissolves and removes lacquers quickly and thoroughly. Do not use on cars! Application is possible on many surfaces such as walls, clay bricks, stone, concrete surfaces, marble, asphalt, glass, metal and wooden surfaces. It becomes a gel-like consistency, to keep from running off vertical surfaces. Application on non-ferrous metals might cause discoloration. Content is ph-neutral. Available as 400ml. USE: Surfaces should be dry, clean of dust, oils and rust. Check firmness and stability of the basic color on painted grounds at an inconspicuous spot. Sensitive areas not be treated should be covered. Spray generously, let act for 10 - 15 min. Depending on quality and age of the paint to be removed, acting time can be shortened or extended up to 24 hours. Scrape off with a suitable tool. If necessary, wash off with cellulose nitrate diluent or water. On porous grounds, use a wire brush. If necessary, repeat the procedure. Before applying new paint, all REMOVER residues must be cleaned.







# ADHESIVE SPRAY

## PERMANENT

Acid-free adhesive spray consisting of a synthetic base with solvents. Single application spray adhesive for permanent adhesion. Suitable for most materials like foam, jute, felt, textiles, insulating material, expanded polystyrene, plastics, foils, paper, cardboard, wood and to adhere inlays. Not suitable for use with artificial leather or other materials with plasticizing agents or softeners (e.g. plasticized PVC). Always test before use. Can be applied to one or both surfaces to be adhered. Final adhesion strength is reached after 24 hours. Can be applied in a temperature range of -10°C (14F) to 50°C (122F) subject to materials used and their weights. No bleed through when used on textiles. Suitable for craft & paperwork. Clean and efficient when applied over small or large areas. Available as 400ml and 150ml.

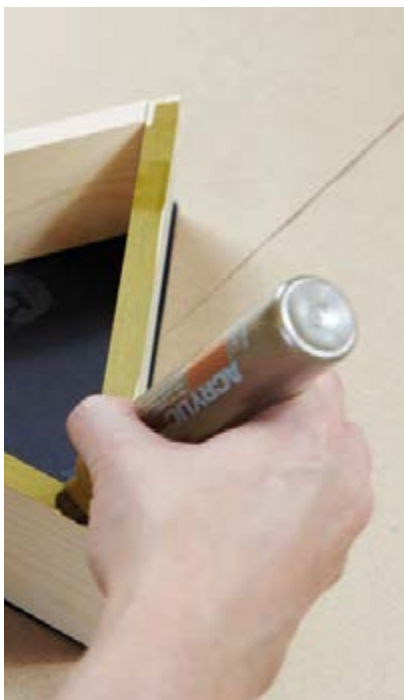




# MIXED MEDIA APPLICATIONS

## THE PERFECT TOOLS FOR CREATIVE WORK

Use Montana GOLD spray paint for your mixed media applications, Montana GOLD spray paint is compatible for mixed media use with the Montana ACRYLIC paint. Colors carrying the same name will color match to the Montana ACRYLIC colors once sealed with the Montana VARNISH spray gloss. When combined with Montana GOLD we recommend to apply ACRYLIC paint with a brush or air brush for best results. Due to a different base between ACRYLIC paint and GOLD spray paint, for best color matching results apply a coat of Montana VARNISH spray gloss or ACRYLIC Varnish gloss for one even finish. Differences may appear with different substrates. Always test before use!



# STARTING A SPRAY CAN

## DON'T FORGET TO REMOVE THE SAFETY RING AND SHAKE WELL

To reduce waste from packaging material, instead of a lid, Montana spray cans have a small black safety ring underneath the cap to prevent the can from being sprayed. To start using a Montana spray can it is necessary to remove the black safety ring under the nozzle first. There are a few Montana spray cans that do have a lid (such as ADHESIVE, GLITTER, GRANIT) - these cans do not have a safety ring and therefore only the lid needs to be removed.

Shake well: Montana products contain the highest quality ingredients and a high pigment load to guarantee an extraordinarily strong coverage. For optimum results, make sure to shake the can to mix the paint very well by using the technique shown here.

For optimal lifespan, always make sure to store with the nozzle on the can.

### WATCH THE VIDEO:





1.

The safety ring is easy to remove - just lift up the nozzle and turn the spray can up side down and the ring will fall out.



2.

The ring helps to avoid accidental triggering in transport or storage.



3.

Turn the can upside down. Strike the bottom of the can against the palm of your other hand.



4.

Repeat this several times to make sure to loosen up the ball bearings\* from the pigments in the can.



5.

Once the ball bearings\* are loose, keeping the can turned upside down (advantage of gravity) and shake.



6.

Then shake the can vertically for at least 2 minutes.



7.

After you have shaken the can well put the nozzle back on the can. Fix carefully with your finger and make sure that it fits.



8.

Make sure to always do the first spray on a test surface first, as the top of the valve system may harbor more solvent than pigment on the first shot. This is normal.

\* the following products do not contain ball bearings: ACETONE and ADHESIVE SPRAY. Just shake the cans well for 2-3 minutes

# GOOD TO KNOW

## GENERAL INFORMATION

### ENVIRONMENTALLY FRIENDLY

Montana sprays are 100 % free of heavy metals and comply with the latest international labelling and safety regulations.

### DISPOSAL

Montana spray cans are made from steel and can be recycled. Recycling procedures from empty cans vs. partially filled cans differ - check with your local recycling facility for details.

### FOR OPTIMAL PERFORMANCE

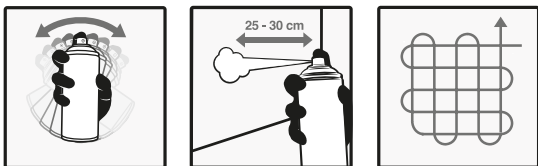
Store cans with nozzle on in a dry area out of direct sunlight or sources of heat. Use during dry weather in areas protected from the wind. When using indoors, spray in a well ventilated area. When possible apply at temperatures between 10°C (50F) and 27°C (80F). Protect surrounding objects.

### ADVICE FOR SPRAYING SMALL AREAS

When painting small areas it is recommended that a mask be used - such as a piece of cardboard with a hole cut in in which is slightly larger than the area to be sprayed. The mask should be held about 1-2 cm (0.5 inches - 0.75 inches) from the surface. This helps to give more precise control over the surface being sprayed. You can also use a mask to protect areas you don't want to get paint on.

### ADVICE FOR SPRAYING LARGE AREAS

To cover large areas, use a fat cap (Level 5 or 6) and spray from a further distance. Move the can slowly and evenly back and forth, changing direction only after the spray has moved past the object. This makes it easier to control the amount of paint being applied, as well as helps to avoid drips.



Apply additional coats if desired. Additional coats should be applied before the first coat is completely dry, but within 1-2 minutes of the prior coat being applied. For 4th coat or more, wait 24 hours before applying to avoid the risk of lifting paint.

Please make sure to always read the safety instructions and application notes on the back of the can. The suggestions here are guidelines for general use - we always recommend to test first in order to avoid unwanted results. More information on the MONTANA-CANS website:

FIND MONTANA HOW TO USE VIDEOS ONLINE:

[WWW.MONTANA-CANS.COM/HOWTO](http://WWW.MONTANA-CANS.COM/HOWTO)





# MONTANA CANS BLOG

Join the MONTANA-CANS community on our blog and social media channels for instant inspiring DIY and art projects, videos, exclusive contents and more!

[WWW.MONTANA-CANS.BLOG](http://WWW.MONTANA-CANS.BLOG)



FOLLOW MONTANA-CANS DIY PROJECTS:

[WWW.MONTANA-CANS.BLOG/DIY](http://WWW.MONTANA-CANS.BLOG/DIY)

[INSTAGRAM.COM/ALLSPRAYPAINTED](https://www.instagram.com/allspraypainted)

[@ALLSPRAYPAINTED](https://www.instagram.com/allspraypainted)

**MONTANA<sup>®</sup>**  
**CANS** *MONTANA*

[WWW.MONTANA-CANS.COM](http://WWW.MONTANA-CANS.COM)

[WWW.MONTANA-CANS.BLOG](http://WWW.MONTANA-CANS.BLOG)



MONTANA TECH & EFFECT SPRAY BROCHURE GB - TNR 392900 / 12-16

**TM!by**  
ONLINE STORE

<https://tm.by>  
Интернет-магазин TM.by