



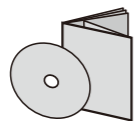
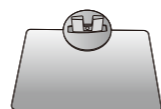
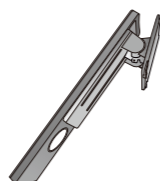
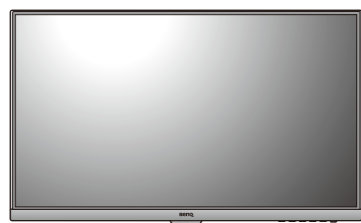
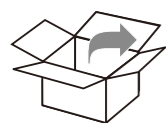
LCD Monitor Quick Start Guide

DesignVue Designer Monitor | PD Series

AQCOLOR™
Colors You Can Trust

DN: PD00U-Q-VI

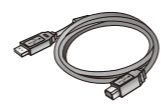
© 2019 BenQ Corporation. All rights reserved. Rights of modification reserved.



DP to mini-DP



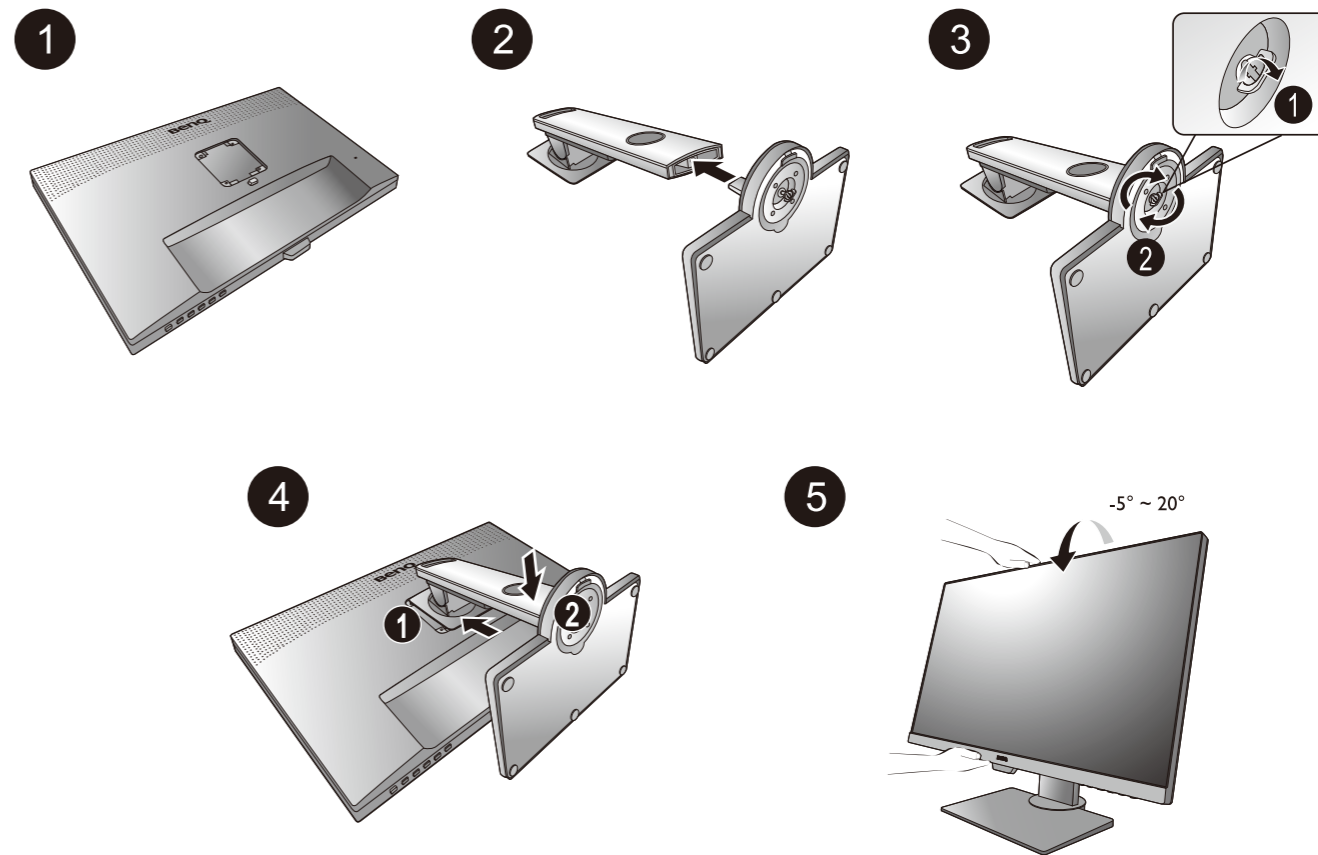
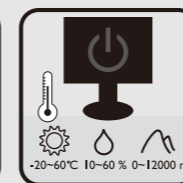
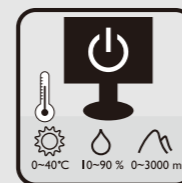
HDMI



USB



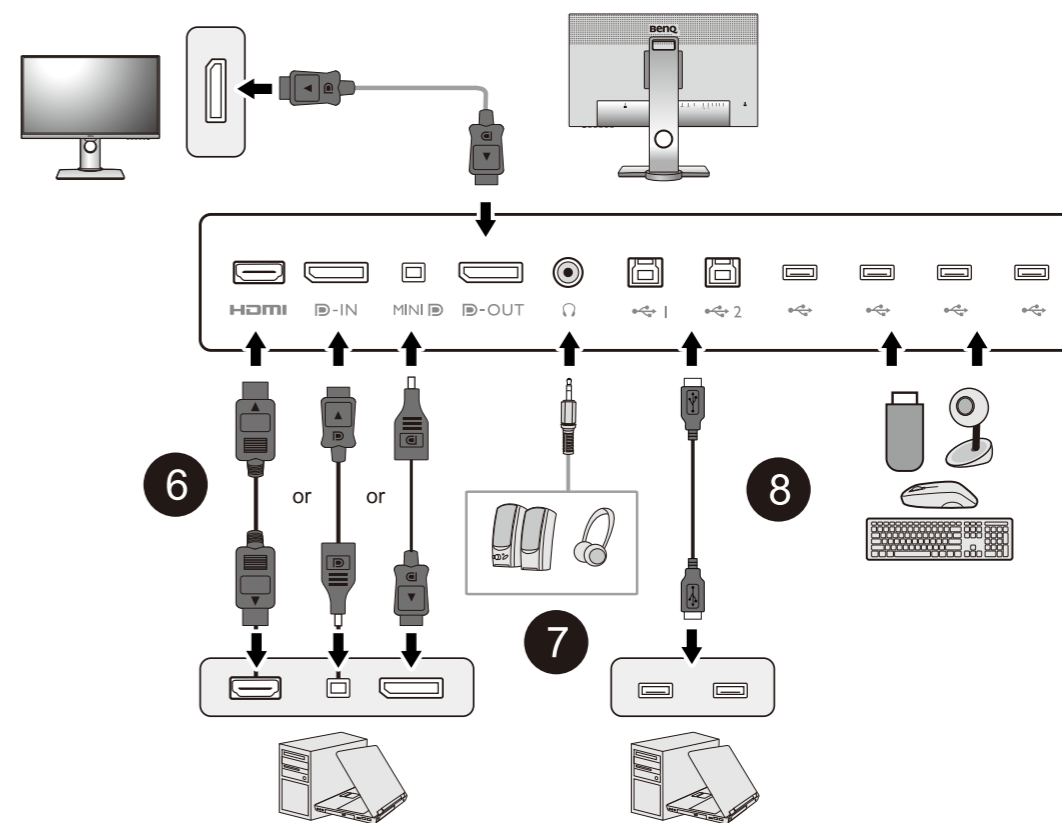
DP
(optional)



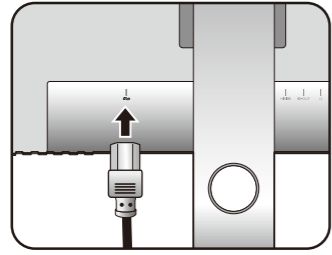
6 Video

7 Audio

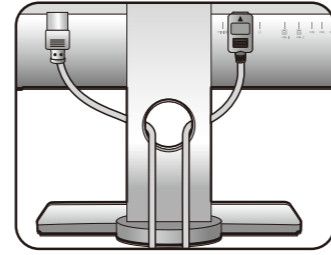
8 USB



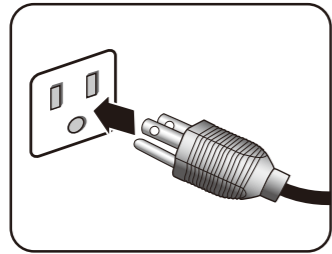
9



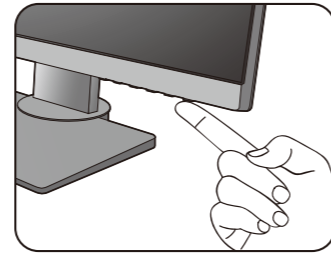
10



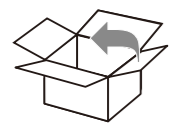
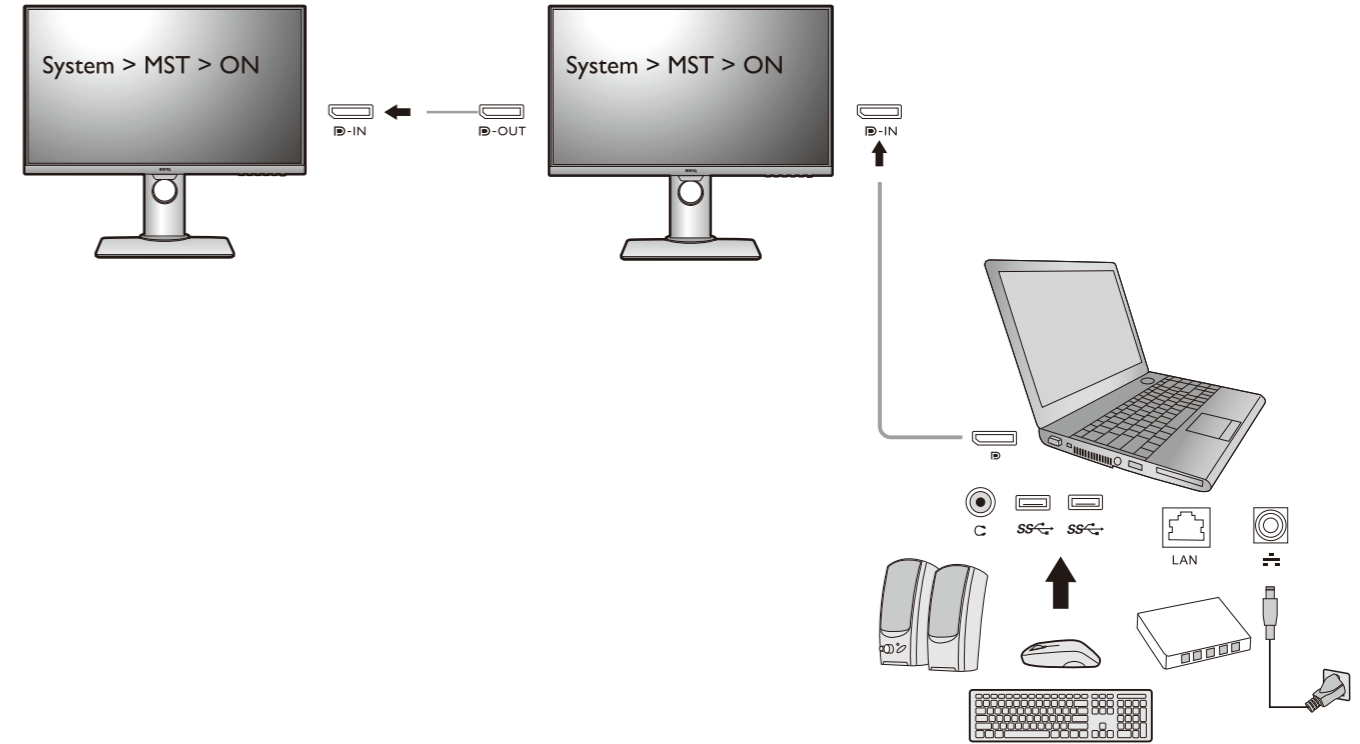
11



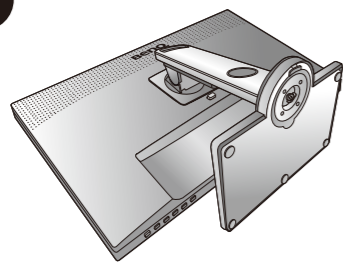
12



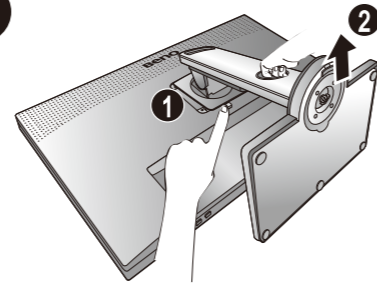
Connecting multiple monitors via MST (Multi-Stream Transport)



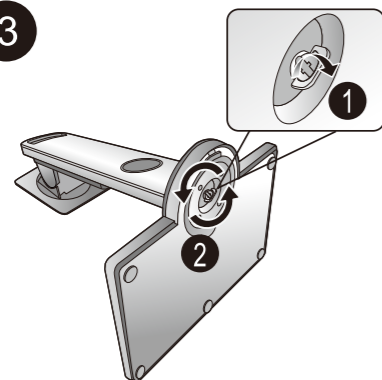
1



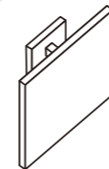
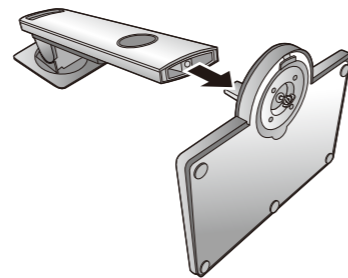
2



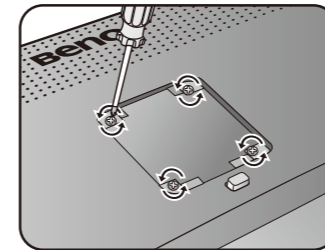
3



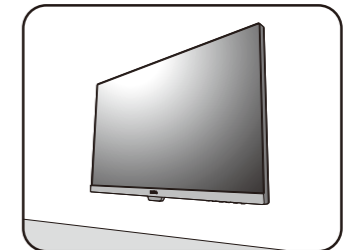
4



1



2



M4 x 10 mm



PD2700U



CAD / CAM mode



Animation Mode



DualView



KVM Switch

