



# GRANIT

## SYN SHPD PLUS SAE 10W-40



Suitable for, and approved by, a number of OEMs, such as Mercedes-Benz, MAN, Volvo, IVECO, etc.

GRANIT SYN SHPD PLUS SAE 10W-40 is a fully synthetic HD engine oil, developed to meet the stringent requirements of a modern commercial vehicles equipped with after-treatment system (EGR or/and ECR).

Based on premium quality synthetic base oils, GRANIT SYN SHPD PLUS is a new generation oil tailored to meet the increased anti-oxidation requirements of Mercedes-Benz's sheet 228.3. It fights superbly corrosion and soot-induced wear, the primary concern for Euro IV 'clean technology' engines, due to the increasing use of biodiesel in the fuel.



Fully synthetic, performance SHPDEO for Euro III, IV & V units; exceeds ACEA E7, B4 & API CI-4 specs



Fuel economy



Wear protection



Turbocharger protection

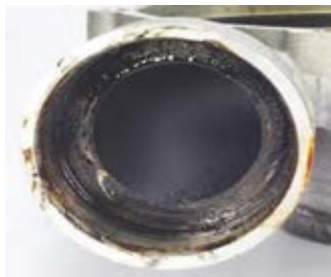


### Try to remember

- ✓ Fully synthetic HD engine oil ; **SAE 10W40**
- ✓ **TriboACT® Formula inside.**
- ✓ Strong oxidative performance in a variety of oxidation tests (PDSC, KHT, Daimler DOT) demonstrates the prevention of sludge build-up and oil thickening in oil galleries; pathways do not block, which could damage and shorten the life of the engine.
- ✓ Base number retention over time and complete anti-wear (soot- & corrosion-induced) protection against biodiesel's 'effects' that contributes to engine durability.
- ✓ High performance synthetic base stock with narrower boiling range boosts lower oil consumption.



### Turbocharger diffuser: Superior deposits performance



Industry standard engine oil



GRANIT SYN SHPD PLUS

OEM	Approved
API	CI-4, SL
ACEA	E7, E5, B4, A3
Daimler	MB-Approval 228.3, MB-Approval 229.1
Volvo	VDS-3
Renault Trucks	RLD-2
Mack	EO-M Plus EO-N
MAN	M3275-1
MTU	Cat. 2
Deutz	DOC III-10
Cummins	CES 20076, CES 20077, CES 20078
Caterpillar	ECF-2, ECF-1a
Allison	C-4
Global	DHD-1
DAF	SHPD

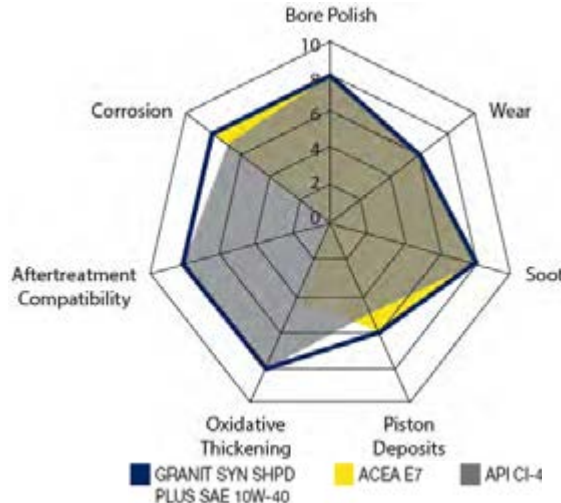
LPC's "tribological-action" empowering formula was developed to address the latest industry challenges and exceed the continuously evolving lubrication requirements of engine manufacturers.

**APPLICATION GUIDE**


Cyclon GRANIT SYN SHPD PLUS SAE 10W-40 boosts Mercedes Benz approvals 228.3 & 229.1 amongst its list of credentials, demonstrating its ability to perform in some of the most advanced commercial vehicles on the road. It is also approved against MAN 3275-1 and VOLVO VDS-3.

It is suitable for all types of both on-road & off-road heavy duty diesel engines of Euro III up to Euro V generation that require performance levels as defined by ACEA E7 and API CI-4 specs, providing exceptional performance where exhaust after-treatment devices (excl. DPF) are in place.

It is suitable for a wide range of high-power, turbocharged, low-emission engines used in highway truck, bus and coach applications as well as for leading off-highway agricultural and construction equipment equipped with Caterpillar, Cummins, Deutz and MTU engines. Being a versatile product, it provides a competitive logistics and inventory benefit and an excellent lubrication solution.


**What is it?**

TriboACT® is an additive system that is based on the extra strong chemical interaction of various polarity ingredients included within.

**What does it do?**

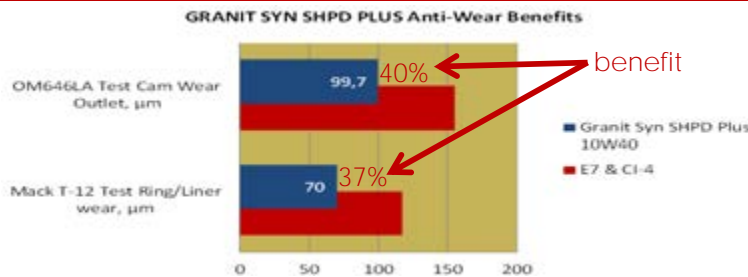
The robust and synergistic ACTION of TriboACT® boosts the lubricant's critical tribological characteristics:

- Oil film consistency in the valve train.
- Wear control in the piston and rings area, clean-ability in the turbocharger region.
- Fuel economy.

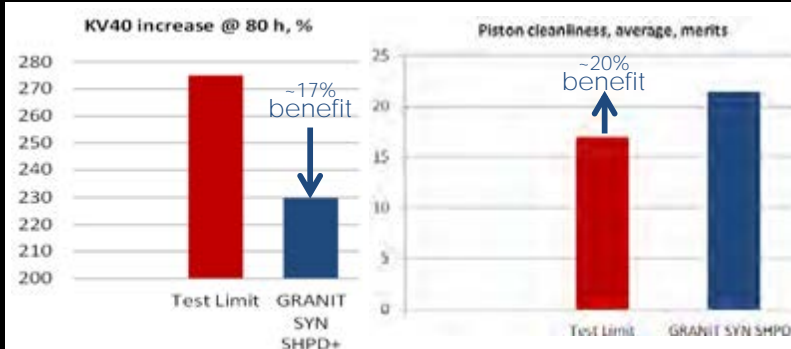
The driving force behind TriboACT® is LPC's 35 years of accumulated know-how and substantial investments in formulating, testing and blending innovative and technologically superior lubricant products.

**SUPERIOR WEAR PERFORMANCE**

Extra wear reserves demonstrated at strict OM 646LA & Mack T12 engine tests.


**SUPERIOR OXIDATION PERFORMANCE**

Outstanding oxidation performance supported by sequence III F (KV increase) & OM501LA (piston cleanliness) test.


**Contact Info:**

LPC S.A.  
 124 Megaridos Av. GR-19300  
 switchboard  
 t: +30 210 8093900  
 orders  
 t: +30 210 8093949  
 customerservice@cyclon.gr  
 exports  
 t: +30 210 8093903  
 exports@lpc.gr  
 technical issues/services  
 t: +30 210 8093929  
 technical@cyclon.gr

www.cyclon-lpc.com

"TriboACT" & "TriboACT Formula" are registered trademarks of LPC S.A.